

32
SECTION

19
TOWN

06
RANGE

ADAMS COUNTY

COUNTY CORNER NO: 124

ROMPORTOL ID: 41906320020

PUBLIC LAND SURVEY MONUMENT RECORD

TYPE OF MONUMENT: 5" CONCRETE MONUMENT
ADAMS COUNTY COORDINATES, NAD 83 (2007)

N. 255925.906

E. 533516.181

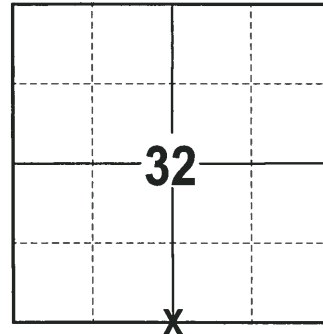
ELEVATION- DATUM

FIELD WORK DATE: 01/23/2018

BASIS FOR MONUMENT LOCATION

1974 - PLS 1103 FOUND 5-INCH DIAMETER CONCRETE MONUMENT. TRAVERSED SECTION 5 AND VERIFIED LOCATION WITH THE SOUTH QUARTER CORNER AND THE CENTER OF THE SECTION AND TIED OUT.

2018 - PLS 2994 FOUND A 5" CONCRETE MONUMENT 4" ABOVE THE GROUND SURFACE AND 2 WITNESS TREES. THE MONUMENT AGREES WITH THE EXISTING WITNESS TREES. ACCEPTED THE 5" CONCRETE MONUMENT AS THE CORNER LOCATION. SET 4 NEW TIES AND MEASURED TO THE TIES AND WITNESS TREES.



LOCATION
(INDICATE CORNER BY "X")

SEAL:



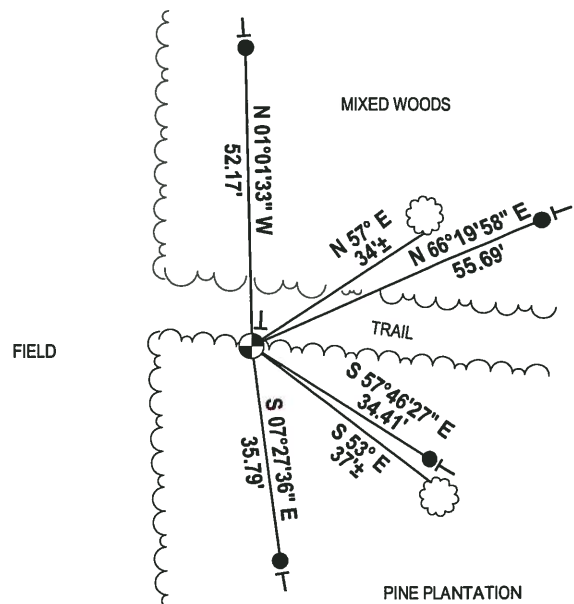
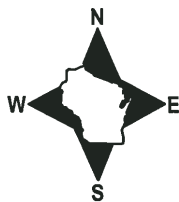
DATA SHOWN HERE ON THIS TIE SHEET IS CORRECT AND COMPLETE TO THE BEST OF MY KNOWLEDGE AND BELIEF.

PROFESSIONAL LAND SURVEYOR

DATE 3-1-18

- TIE SKETCH -

NOTE: THE CORNER FALLS 6± SOUTH OF THE CENTERLINE OF THE TRAIL.



- 3/4" x 18" IRON REBAR SET, 1.50#/FT
- ⊕ 5" CONCRETE MONUMENT FOUND
- └ VINYL "T" POST
- ☁ WITNESS TREE FOUND

ADAMS COUNTY

Survey Monument Record

TYPE OF MONUMENT: 5-inch Diameter Concrete Monument

STATE PLANE COORDINATES: N _____

E _____

ELEVATION — M.S.L. DATUM: _____

THETA ANGLE: _____

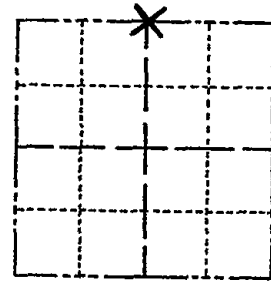
FIELD BOOK: /// PAGE 2

CORNER NO. 373

SECTION 5

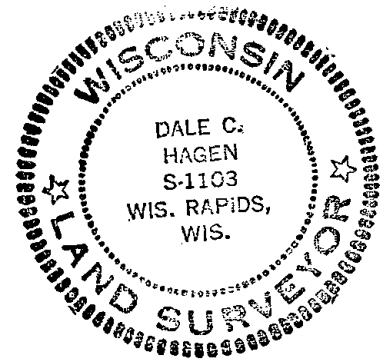
TOWN 18

RANGE 6



LOCATION
(Indicated by 'X')

SEAL:



BASIS FOR MONUMENT LOCATION

(Use reverse side if necessary)

Show info such as: History of corner, with reference to Vol. and pg, dates, surveyor; exact description of monument replaced; if location computed, by taped or EDM traverse; landowner remarks, etc.

Found 5-inch diameter concrete monument and traversed Section 5. Checked with South Quarter corner and center of section.

OK 11-30-78 RN-DA
3-8-83 GR-SS 1 NEW TIE
O.K. 8-11-92 SG-BS
ALL OK, 2-14-98-JG
3-GONE, 3-NEW, MON. OK, 11-15-07- SG-IS

CERTIFIED CORRECT:

Dale C. Hagen
Registered Land Surveyor

DATE: April 24, 1974

TIE SKETCH

(Show at least four ties)

NOTE: Ties to nail and disc.

