

## PUBLIC LAND SURVEY MONUMENT RECORD

TYPE OF MONUMENT: HARRISON (BROKEN-TOP)  
 ADAMS COUNTY COORDINATES, NAD 83 (2007)

N. 255976.901

E. 557196.451

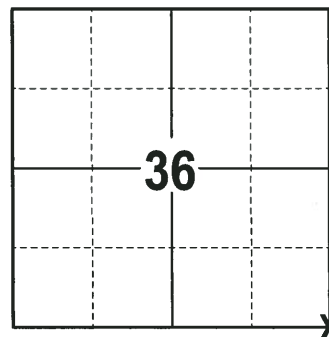
ELEVATION- \_\_\_\_\_ DATUM \_\_\_\_\_

FIELD WORK DATE: 01/12/2018

### BASIS FOR MONUMENT LOCATION

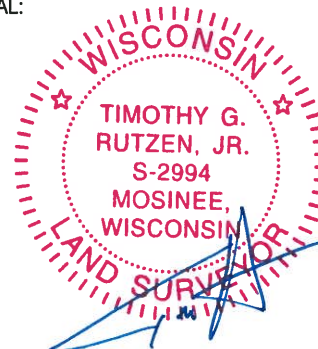
1976 - PLS 1103 RAN EDM/TRANSIT TRAVERSE AROUND SECTIONS 1, 12 AND PORTIONS OF ADJOINING SECTIONS TO DETERMINE THE SEARCH AREAS FOR INVESTIGATION. EXCAVATION WITH A BACKHOE YIELDED NO EVIDENCE OF THE ORIGINAL CORNER OR ANY REMONUMENTATION. AFTER A THOROUGH ANALYSIS OF ALL THE FIELD EVIDENCE, OCCUPATION AND ORIGINAL NOTES, THIS CORNER WAS RELOCATED ON THE CENTERLINE OF CHICAGO AVENUE AND THE OPPOSITE FENCES NORTH AND SOUTH. SET A HARRISON MONUMENT AT THE CORNER LOCATION AND TIED OUT.

2018 - PLS 2994 FOUND A HARRISON MONUMENT WITH A BROKEN-TOP 6" BELOW THE ROAD SURFACE, 2 TIES AND 2 WITNESS TREES. THE MONUMENT AGREES WITH THE EXISTING TIES AND WITNESS TREES. ACCEPTED THE HARRISON MONUMENT WITH A BROKEN-TOP AS THE CORNER LOCATION. SET 4 NEW TIES AND MEASURED TO THE TIES AND WITNESS TREES.



**LOCATION**  
 (INDICATE CORNER BY "X")

SEAL:



DATA SHOWN HERE ON THIS TIE SHEET IS CORRECT AND COMPLETE TO THE BEST OF MY KNOWLEDGE AND BELIEF.

PROFESSIONAL LAND SURVEYOR

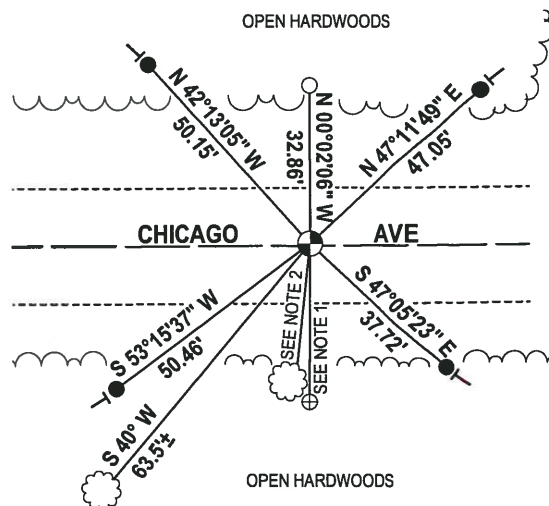
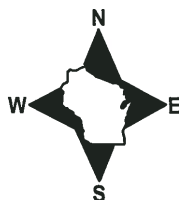
DATE 3-1-18

### - TIE SKETCH

NOTE 1: THE 1-1/2" O.D. IRON PIPE IS S 00°20'37" W, 32.86' FROM THE CORNER LOCATION.

NOTE 2: THE WITNESS TREE IS S 03° W, 25.5' FROM THE CORNER LOCATION.

NOTE 3: THE CORNER FALLS 0.5'± NORTH OF THE CENTERLINE OF CHICAGO AVE.



- 3/4" x 18" IRON REBAR SET, 1.50#/FT
- 1-1/2" O.D. IRON PIPE FOUND
- ⊕ 1" O.D. IRON PIPE FOUND
- ⊙ HARRISON (BROKEN-TOP) FOUND
- VINYL "T" POST
- ☁ WITNESS TREE FOUND

ADAMS COUNTY

CORNER NO. 1041

Survey Monument Record

SECTION 1

TYPE OF MONUMENT: Harrison

TOWN 18

STATE PLANE COORDINATES: N \_\_\_\_\_

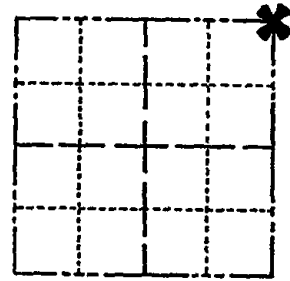
RANGE 6

E \_\_\_\_\_

ELEVATION — M.S.L. DATUM: \_\_\_\_\_

THETA ANGLE: \_\_\_\_\_

FIELD BOOK: 37 PAGE 48



LOCATION  
(Indicated by 'X')

SEAL:

BASIS FOR MONUMENT LOCATION

(Use reverse side if necessary)

Show info such as: History of corner, with reference to Vol. and pg, dates, surveyor; exact description of monument replaced; if location computed, by taped or EDM traverse; landowner remarks, etc.

Ran EDM/transit traverse around Sections 1 and 12, and portions of the adjoining sections to determine the search areas for investigation.

Excavation with backhoe yielded no evidence of the original corner or and remonumentation.

After a thorough analysis of all the field evidence, occupation and original notes, this corner was relocated on the centerline of Chicago Avenue and opposite fences North and South.

Monument set 6-16-76.

- OK 11-22-78 RN-SS
- OK 3-4-83 GR-SS
- 1-NEW TIE MON OK, JG
- ALL OK, 2-23-98, JG

CERTIFIED CORRECT:

Dale C. Hagen  
Registered Land Surveyor

DATE: 9-21-76



TIE SKETCH ALL OK 11-12-02 ML  
OK, 12-20-07- JG-SS  
(Show at least four ties)

NOTE:

Ties in trees to nail and disc in blaze.

