

PUBLIC LAND SURVEY MONUMENT RECORD

TYPE OF MONUMENT: ADAMS COUNTY ALUMINUM CAP IN CONCRETE
 ADAMS COUNTY COORDINATES, NAD 83 (2007)

N. 253112.889

E. 530813.690

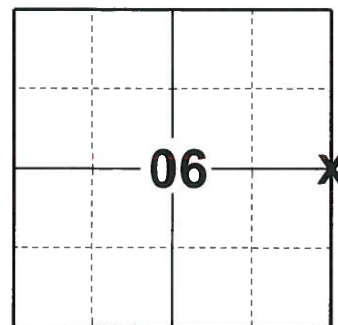
ELEVATION- _____ DATUM _____

FIELD WORK DATE: 06/03/2019

BASIS FOR MONUMENT LOCATION

1973 - PLS 878 FOUND CONCRETE MONUMENT AND TOOK SOME TIES TO IT.

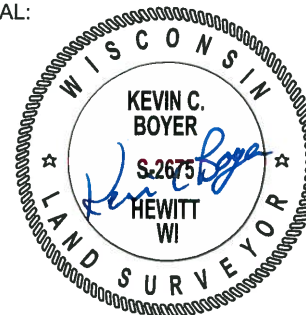
2019 - PLS 2675 FOUND AN ADAMS COUNTY ALUMINUM CAP IN CONCRETE 4" ABOVE THE GROUND SURFACE AND 1 TIE. THE MONUMENT AGREES WITH THE EXISTING TIE. ACCEPTED THE ADAMS COUNTY ALUMINUM CAP IN CONCRETE AS THE CORNER LOCATION. SET 4 NEW TIES AND MEASURED TO THE TIES.



LOCATION

(INDICATE CORNER BY "X")

SEAL:



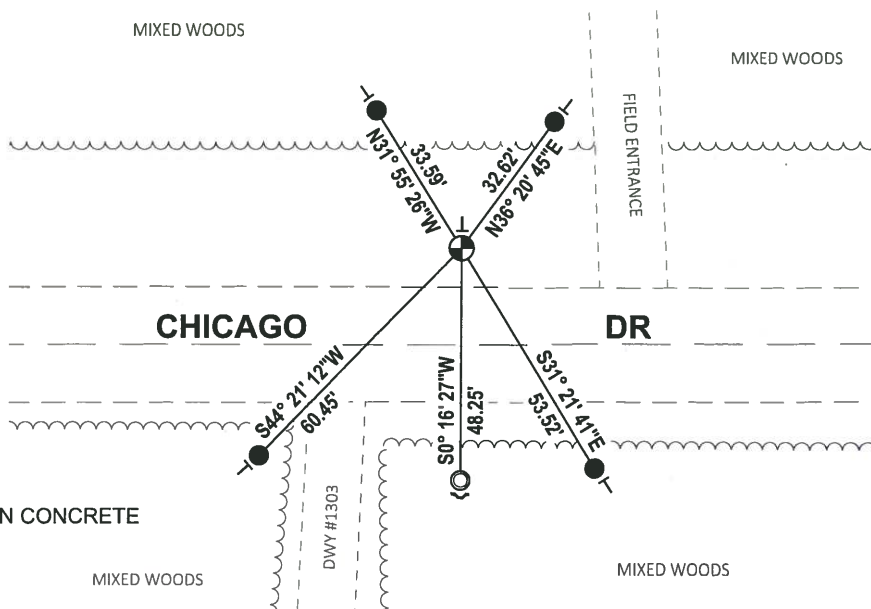
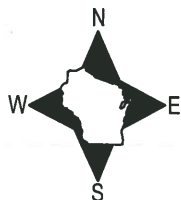
DATA SHOWN HERE ON THIS TIE SHEET IS CORRECT AND COMPLETE TO THE BEST OF MY KNOWLEDGE AND BELIEF.

PROFESSIONAL LAND SURVEYOR

DATE 8/2/19

- TIE SKETCH

NOTE: THE CORNER FALLS 20'± NORTH OF THE CENTERLINE OF CHICAGO AVE.



- SET 3/4" x 18" IRON REBAR, 1.50#/FT
- FOUND 1-1/4" O.D. IRON PIPE
- ⊕ FOUND ADAMS COUNTY ALUMINUM CAP IN CONCRETE
- ↗ STEEL FENCE POST
- ┊ VINYL "T" POST

ADAMS COUNTY

Survey Monument Record

TYPE OF MONUMENT: CONCRETE

STATE PLANE COORDINATES: N _____
E _____

ELEVATION — M.S.L. DATUM: _____

THETA ANGLE: _____

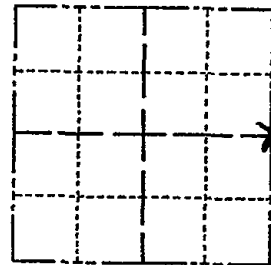
FIELD BOOK: 105 PAGE 60

CORNER NO. 183 15

SECTION 6

TOWN 18

RANGE 6



LOCATION
(Indicated by 'X')

SEAL:



BASIS FOR MONUMENT LOCATION

(Use reverse side if necessary)

Show info such as: History of corner, with reference to Vol. and pg, dates, surveyor; exact description of monument replaced; if location computed, by taped or EDM traverse; landowner remarks, etc.

Found Concrete monument and took some ties to it

August 28, 1972

Anthony B. Kiedrowski R.L.S. 878

OK 2-20-79 GR
" 3-8-83 GR-SS
1-GONE, 1-NEW TIE, MON. OK 8-11-92, JG-BS
1-NEW, MON. OK, 2-24-98-JG
1-NEW 2-13-03 JG-SS
OK, 11-27-07-JG

CERTIFIED CORRECT:

Anthony B. Kiedrowski
Registered Land Surveyor

DATE: 1-30-73

TIE SKETCH

(Show at least four ties)

