

PUBLIC LAND SURVEY MONUMENT RECORD

TYPE OF MONUMENT: HARRISON
 ADAMS COUNTY COORDINATES, NAD 83 (2007)

N. 253268.157

E. 546643.552

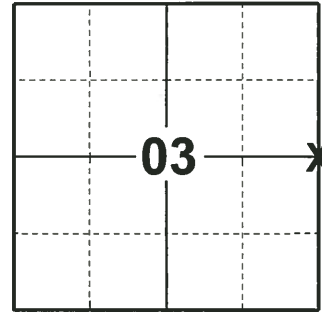
ELEVATION- - - - - DATUM - - - - -

FIELD WORK DATE: 12/16/2019

BASIS FOR MONUMENT LOCATION

1977 - PLS 1323 SET HARRISON ON LINE AND AT SINGLE PROPORTIONATE MEASUREMENT BETWEEN THE SECTION CORNERS NORTH AND SOUTH. FOUND NO EVIDENCE OF THE ORIGINAL GOVERNMENT CORNER OR SUBSEQUENT MONUMENTATION. BURT MORRIS SAID THAT THEY DID NOT KNOW WHERE THE CORRECT LINE WAS WHEN THEY BUILT THE FENCE TO THE SOUTH.

2019 - PLS -2675 FOUND HARRISON FLUSH WITH THE GROUND AND 1 WITNESS. THE MONUMENT AGREES WITH THE WITNESS. ACCEPTED THE HARRISON AS THE CORNER LOCATION. SET 4 NEW TIES AND MEASURED TO THE EXISTING WITNESS.



LOCATION
 (INDICATE CORNER BY "X")

SEAL:



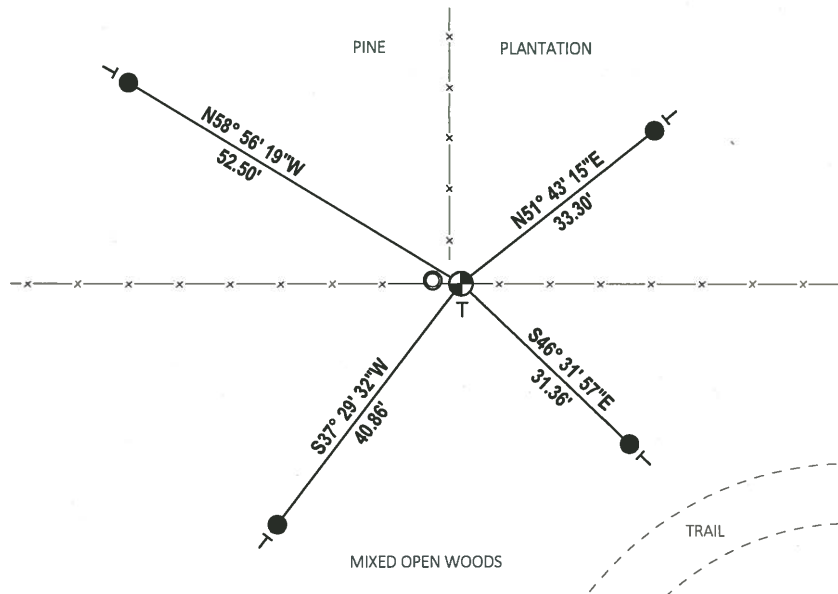
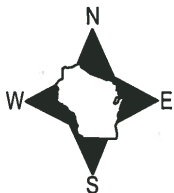
DATA SHOWN HERE ON THIS TIE SHEET IS CORRECT AND COMPLETE TO THE BEST OF MY KNOWLEDGE AND BELIEF.

PROFESSIONAL LAND SURVEYOR

DATE 1/9/2020

- TIE SKETCH

NOTE: WITNESS POST LANDS N83°W 1± FROM CORNER.



- SET 3/4" x 18" IRON REBAR, 1.50#/FT
- ⊕ FOUND HARRISON MONUMENT
- VINYL "T" POST
- WITNESSES POST

ADAMS COUNTY

Survey Monument Record

TYPE OF MONUMENT: HARRISON MONUMENT

STATE PLANE COORDINATES: N _____

E _____

ELEVATION - M.S.L. DATUM: _____

THETA ANGLE: _____

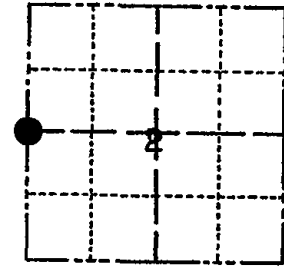
FIELD BOOK: _____ PAGE _____

CORNER NO. 18

SECTION 2

TOWN 18N

RANGE 6E



LOCATION (Indicated by 'X')

SEAL:

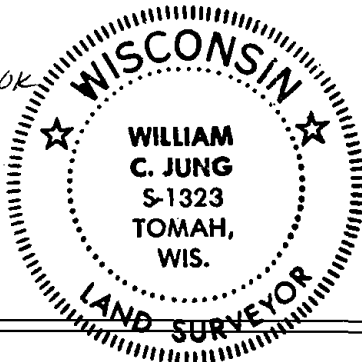
BASIS FOR MONUMENT LOCATION

(Use reverse side if necessary)

Show info such as: History of corner, with reference to Vol. and pg, dates, surveyor; exact description of monument replaced; if location computed, by taped or EDM traverse; landowner remarks, etc.

Set on line and at single proportionate measurement between the section corners North and South. Found no evidence of the original government corner or subsequent monumentation. Burt Morris said that they did not know where the correct line was when they built the fence to the South.

OK 11-22-78 RN-SS
2-TIES GONE, 2-NEW TIES, MON. OK
8-19-92-JG-BS
ALL OK, COME FROM EAST
TO GO TO CORNER
3-6-98-JG
2 NEW TIES 05-02-08 SIS

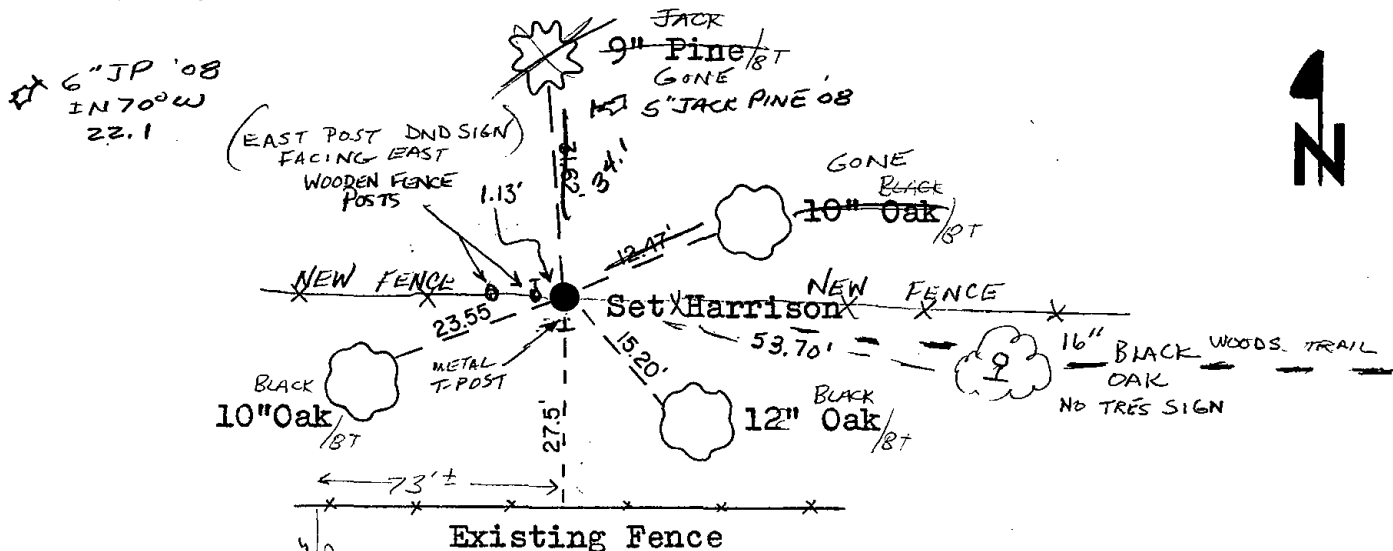


CERTIFIED CORRECT:
William C. Jung
Registered Land Surveyor
DATE: September 29, 1977

TIE SKETCH

(Show at least four ties)

NAILS IN FACE OF TREE



Note: All four bearing trees were double blazed with a nail and cap set in them.