

01
SECTION

18
TOWN

06
RANGE

ADAMS COUNTY

COUNTY CORNER NO: 20

ROMPORTOL ID: 41806012000

PUBLIC LAND SURVEY MONUMENT RECORD

TYPE OF MONUMENT: HARRISON
ADAMS COUNTY COORDINATES, NAD 83 (2007)

N. 253501.212

E. 557179.818

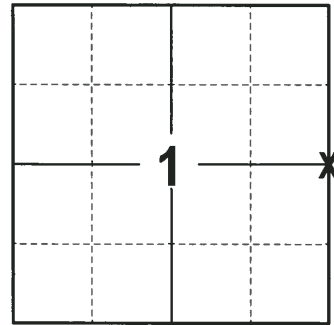
ELEVATION- DATUM

FIELD WORK DATE: 01/12/2018

BASIS FOR MONUMENT LOCATION

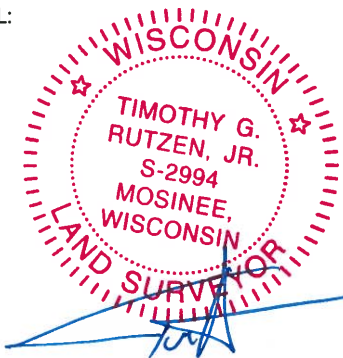
1976 - PLS 1103 RAN EDM/TRANSIT TRAVERSE AROUND SECTIONS 1, 12, AND PARTS OF ADJOINING SECTIONS TO DETERMINE SEARCH AREAS FOR INVESTIGATION. COULD FIND NO EVIDENCE OF THE ORIGINAL MONUMENTATION OR ANY SUBSEQUENT REMONUMENTATION. SET THE CORNER ON A LINE AND PROPORTIONATE TO THE ORIGINAL NOTES BETWEEN THE NORTHEAST AND SOUTHEAST CORNERS OF SECTION 1 AND TIED OUT.

2017 - PLS 2994 FOUND A HARRISON MONUMENT FLUSH WITH THE GROUND SURFACE, 1 TIE AND 3 WITNESS TREES. THE MONUMENT AGREES WITH THE EXISTING TIE AND WITNESS TREES. ACCEPTED THE HARRISON MONUMENT AS THE CORNER LOCATION. SET 3 NEW TIES AND MEASURED TO THE TIES AND WITNESS TREES.



LOCATION
(INDICATE CORNER BY "X")

SEAL:

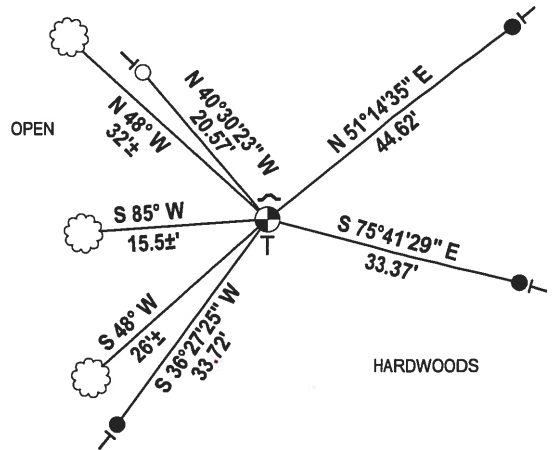
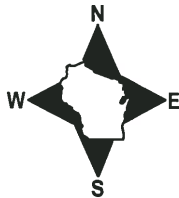


DATA SHOWN HERE ON THIS TIE SHEET IS CORRECT AND COMPLETE TO THE BEST OF MY KNOWLEDGE AND BELIEF.

PROFESSIONAL LAND SURVEYOR

DATE 2-2-18

- TIE SKETCH -



- 3/4" x 18" IRON REBAR SET, 1.50#/FT
- 1-1/4" O.D. IRON PIPE FOUND
- HARRISON FOUND
- ┌ STEEL FENCE POST
- └ VINYL "T" POST
- ☁ WITNESS TREE FOUND

ADAMS COUNTY

Survey Monument Record

TYPE OF MONUMENT: ~~1/2" Iron Bar in Stump (Aspen)~~ HARRISON

STATE PLANE COORDINATES: N _____

E _____

ELEVATION — M.S.L. DATUM: _____

THETA ANGLE: _____

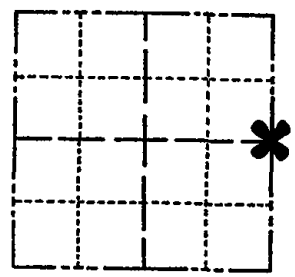
FIELD BOOK: 37 PAGE 50

CORNER NO. 1042

SECTION 1

TOWN 18

RANGE 6



LOCATION (Indicated by 'X')

SEAL:



BASIS FOR MONUMENT LOCATION

(Use reverse side if necessary)

Show info such as: History of corner, with reference to Vol. and pg, dates, surveyor; exact description of monument replaced; if location computed, by taped or EDM traverse; landowner remarks, etc.

Ran EDM/transit traverse around Sections 1 and 12, and parts of adjoining sections to determine search areas for investigation.

Could find no evidence of the original monumentation or any subsequent remonumentation.

Set corner on line and proportionate to original notes between the Northeast and Southeast corners of Section 1.

Set 6-16-76.

OK 11-30-78 RN-DA

ALL TIES OK, NEW MONUMENT NEEDS TO BE SET 2-25-98-JG 9-8-2008-FO. HARRISON - NEW TIES STS

CERTIFIED CORRECT:

Dale C. Hagen Registered Land Surveyor DATE: 9-21-76

TIE SKETCH

(Show at least four ties)

NOTE:

Ties in trees to nail and disc in blaze.

