

PUBLIC LAND SURVEY MONUMENT RECORD

TYPE OF MONUMENT: HARRISON (BROKEN-TOP)
 ADAMS COUNTY COORDINATES, NAD 83 (2007)

N. 250472.609
 E. 530808.797

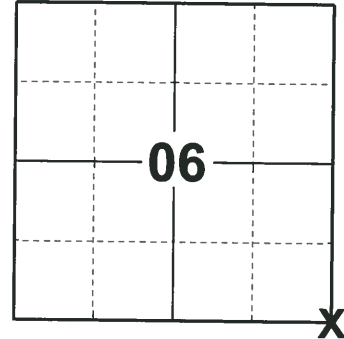
ELEVATION- _____ DATUM _____

FIELD WORK DATE: 05/30/2019

BASIS FOR MONUMENT LOCATION

1971 - PLS 981 FOUND TIE ROD SET HARRISON MONUMENT.

2019 - PLS 2675 FOUND A HARRISON MONUMENT WITH A BROKEN-TOP 12" BELOW THE ROAD SURFACE, 2 TIES, 1 PROPERTY IRON AND 1 WITNESS. THE MONUMENT AGREES WITH THE EXISTING TIES AND WITNESS. ACCEPTED THE HARRISON MONUMENT WITH A BROKEN-TOP AS THE CORNER LOCATION. SET 3 NEW TIES AND MEASURED TO THE TIES, PROPERTY IRON AND WITNESS.



LOCATION
 (INDICATE CORNER BY "X")

SEAL:



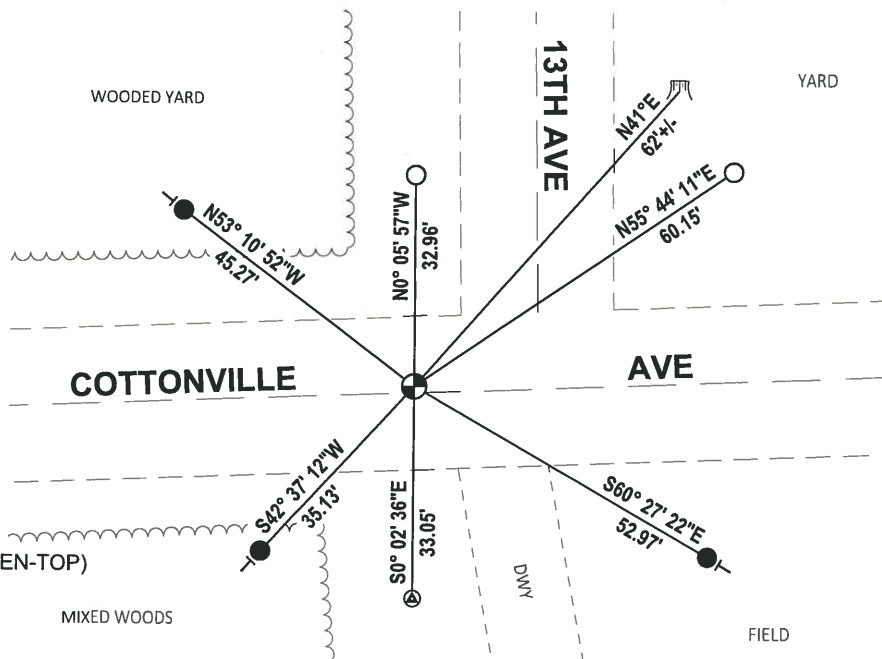
DATA SHOWN HERE ON THIS TIE SHEET IS CORRECT AND COMPLETE TO THE BEST OF MY KNOWLEDGE AND BELIEF.

PROFESSIONAL LAND SURVEYOR

DATE 8/2/19

- TIE SKETCH

NOTE: THE CORNER FALLS 1'± NORTH OF THE CENTERLINE OF COTTONVILLE AVE AND 19.5'± WEST OF THE CENTERLINE OF 13TH AVE.



- SET 3/4" x 18" IRON REBAR, 1.50#/FT
- FOUND 3/4" IRON ROD
- ⊙ FOUND CONCRETE ADAMS COUNTY MONUMENT W/ALUMINUM CAP
- ⊕ FOUND HARRISON MONUMENT (BROKEN-TOP)
- ├ VINYL "T" POST
- ▭ WITNESS TREE STUMP

ADAMS COUNTY

Survey Monument Record

TYPE OF MONUMENT: 30" HARRISON

STATE PLANE COORDINATES: N _____ E _____

ELEVATION - M.S.L. DATUM: _____

THETA ANGLE: _____

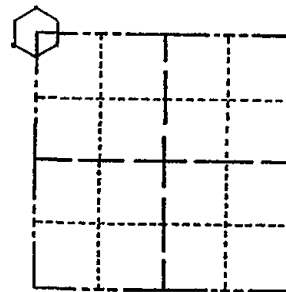
FIELD BOOK: 104 PAGE 36

CORNER NO. 4

SECTION 8

TOWN 18

RANGE 6



LOCATION (Indicated by 'X')

SEAL:

BASIS FOR MONUMENT LOCATION

(Use reverse side if necessary)

Show info such as: History of corner, with reference to Vol. and pg. dates, surveyor; exact description of monument replaced; if location computed, by taped or EDM traverse; landowner remarks, etc.

Found tie rod set monument

July 6, 1971

Sam T. Mullen P.L.S. S-981

OK 11-30-78 RE-DA

OK 3-8-83 GR-SS

" 2-11-88 " "

" 8-11-92 JG-BS

2 TIES REPAIRED - 1 NEW TAKEN 4-10-98 JG-SS Registered Land Surveyor

OK, 12-17-02-JG

CERTIFIED CORRECT:

DATE: _____

TIE SKETCH OK, 11-27-07-JG

(Show at least four ties)

CONCRETE MONUMENT
TOP BROKEN - BOTTOM IN PLACE
SET 3/4" ROD IMMEDIATELY
EAST OF BOTTOM AT 33.00'
FROM HARRISON 198

R. R. SPIKE 40" OAK

13TH AVE

33.00'

61.95'

COTTONVILLE AVE.



52.35'

33.00'

12" Burr
OAK '98

40.30'

CONCRETE MONUMENT REF.
Fd. TOP 2 1/4" AND RESET ON TOP OF
BOTTOM PORTION Fd. IN PLACE '98
33.00' FROM HARRISON
(AT WEST EDGE OF FIELD ENTRY)

R. R. SPIKE 36" OAK
STUMP