

PUBLIC LAND SURVEY MONUMENT RECORD

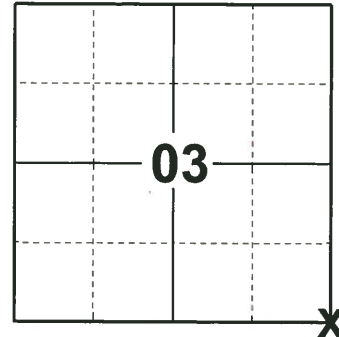
TYPE OF MONUMENT: RAILROAD SPIKE
ADAMS COUNTY COORDINATES, NAD 83 (2007)

N. 250636.461

E. 546655.839

ELEVATION- - - - DATUM - - - -

FIELD WORK DATE: 05/29/2019



LOCATION

(INDICATE CORNER BY "X")

SEAL:



DATA SHOWN HERE ON THIS TIE SHEET IS CORRECT AND COMPLETE TO THE BEST OF MY KNOWLEDGE AND BELIEF.

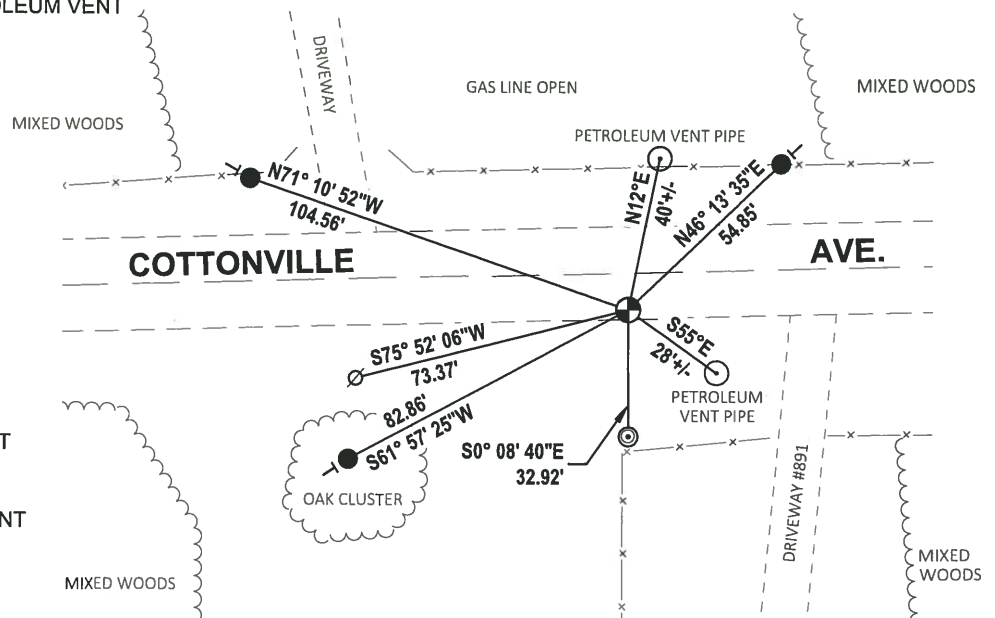
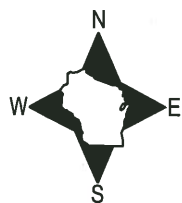
PROFESSIONAL LAND SURVEYOR

DATE 8/2/19

TIE SKETCH

NOTES: THE CORNER LANDS 9± SOUTH OF COTTONVILLE AVE. CENTERLINE

THE VENT IS TO THE FACE OF PETROLEUM VENT PIPE.



- SET 3/4" x 18" IRON REBAR, 1.50#/FT
- ◎ FOUND 2-3/8" O.D. IRON PIPE
- ⊕ FOUND RAILROAD SPIKE MONUMENT
- ⊘ WITNESS POWER POLE
- VINYL "T" POST

ADAMS COUNTY

Survey Monument Record

TYPE OF MONUMENT: HARRISON MONUMENT

STATE PLANE COORDINATES: N _____

E _____

ELEVATION — M.S.L. DATUM: _____

THETA ANGLE: _____

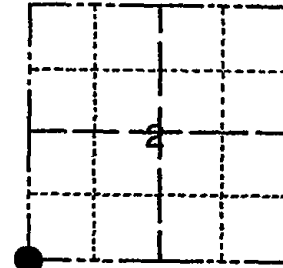
FIELD BOOK: _____ PAGE _____

CORNER NO. 29

SECTION 2

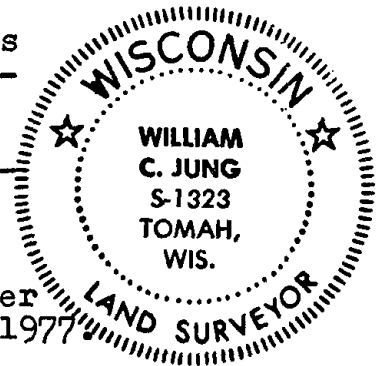
TOWN 18 N

RANGE 6E



LOCATION (Indicated by 'X')

SEAL:



BASIS FOR MONUMENT LOCATION

(Use reverse side if necessary)

Show info such as: History of corner, with reference to Vol. and pg, dates, surveyor; exact description of monument replaced; if location computed, by taped or EDM traverse; landowner remarks, etc.

Ran an EDM/theodolite traverse of Section 2 and parts of Sections 3,4,9, and 10. Set the corner in a location that best fits the existing conditions after analyzing the field evidence, original government notes, and existing corners. This corner falls within the bounds of a high pressure underground petroleum line. I didn't think it a wise idea to take a back hoe into this area. We dug a large search hole by hand, but found no evidence of the original corner or any remonumentation. Set a Harrison on August 6, 1977. The corner falls on the South edge of the asphalt.

- OK - 11-22-78 RN-SS
- OK 3-4-83 SS
- " 2-11-88 GR-SS
- 1-GONE, 1-NEW, MON OK, JG-BS, 8-7-92
- OK, 3-6-98-JG
- OK, 3-6-03-JG

CERTIFIED CORRECT:

William C. Jung
Registered Land Surveyor

DATE: September 29, 1977

TIE SKETCH

FD R. R. SPIKE @ CORNER MATCHES TIES. 11-27-07-36

(Show at least four ties)

