

## PUBLIC LAND SURVEY MONUMENT RECORD

TYPE OF MONUMENT: HARRISON  
 ADAMS COUNTY COORDINATES, NAD 83 (2007)

N. 247857.354

E. 530855.259

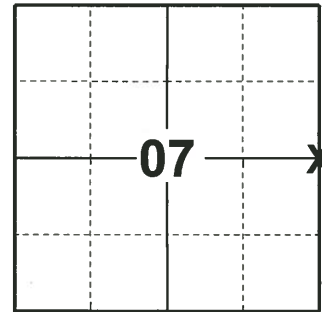
ELEVATION- \_\_\_\_\_ DATUM \_\_\_\_\_

FIELD WORK DATE: 12/17/2019

### BASIS FOR MONUMENT LOCATION

1981 - PLS 1167 SEARCHED AREA FOR EVIDENCE OF ORIGINAL MONUMENT AND FOR REMONUMENTED CORNER. UNABLE TO LOCATED EITHER. SET E1/4 CORNER MIDWAY ON A STRAIGHT LINE BETWEEN ADJACENT SECTION CORNERS. RAN EDM TRAVERSE.

2019 - PLS 2675 FOUND HARRISON 12" BELOW THE GROUND AND 4 WITNESS TREES. THE MONUMENT AGREES WITH ALL 4 WITNESS TREES. ACCEPTED THE HARRISON AS THE CORNER LOCATION. SET 4 NEW TIES AND MEASURED TO THE EXISTING WITNESS TREES.



LOCATION  
 (INDICATE CORNER BY "X")

SEAL:



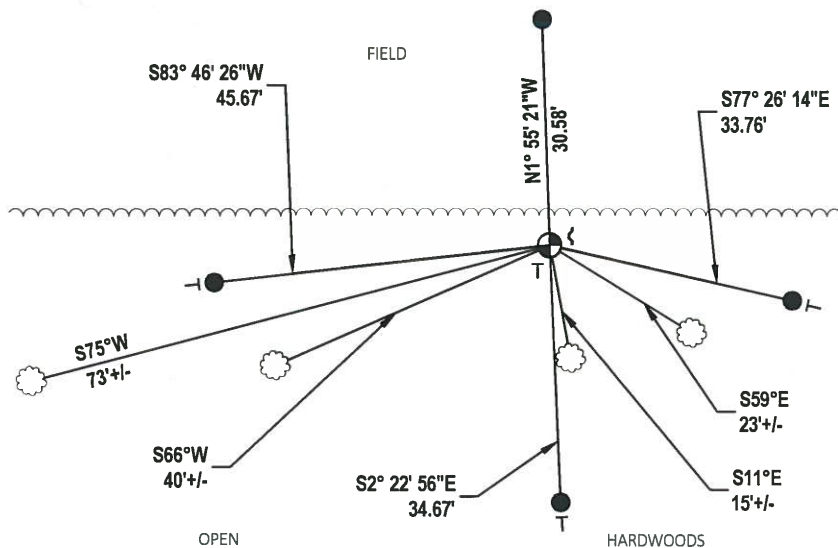
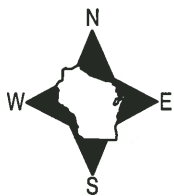
DATA SHOWN HERE ON THIS TIE SHEET IS CORRECT AND COMPLETE TO THE BEST OF MY KNOWLEDGE AND BELIEF.

PROFESSIONAL LAND SURVEYOR

DATE 1/9/2020

### - TIE SKETCH

NOTE 1: THE CORNER LANDS INSIDE OF WOODLINE 4±.  
 NOTE 2: TIE THAT LANDS IN FIELD IS 18" BELOW GROUND SURFACE.

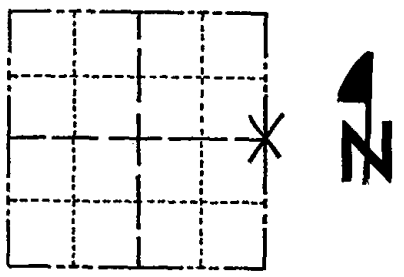


- SET 3/4" x 18" IRON REBAR, 1.50#/FT
- ⊕ FOUND HARRISON MONUMENT
- ┊ VINYL "T" POST
- ☼ WITNESS TREE
- ┌ STEEL FENCE POST

# Government Land Corner Certificate

Adams County  
 TYPE OF MONUMENT: HARRISON  
 STATE PLANE COORDINATES: N \_\_\_\_\_  
 E \_\_\_\_\_  
 ELEVATION — M.S.L. DATUM: \_\_\_\_\_  
 THETA ANGLE: \_\_\_\_\_  
 FIELD BOOK: LL PAGE \_\_\_\_\_  
 DRAWN BY: Nuber, Roger

CORNER NO. 35  
 SECTION 7  
 TOWN 18  
 RANGE 6E



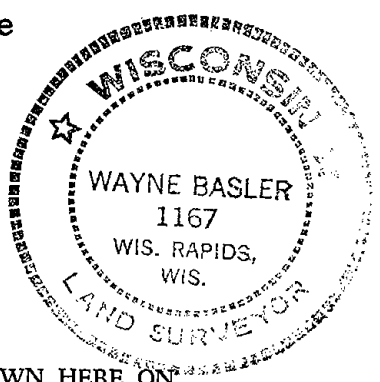
LOCATION  
(Indicated by 'X')

## BASIS FOR MONUMENT LOCATION

Show info such as: History of corner, with reference to Vol. and pg., dates, surveyor; exact description of monument replaced; if location computed, by taped or EDM traverse; landowner remarks, etc. (Use reverse side if necessary)

Searched area for evidence of original monument and for remonumented corner. We were unable to locate either. Set  $E\frac{1}{4}$  Cor. midway on a straight line between adjacent section corners. Ran EDM traverse.

SEAL:



DATA SHOWN HERE ON CERTIFIED CORRECT:

Wayne Basler  
 Registered Land Surveyor

DATE: 6-15-81

## TIE SKETCH

Show at least four ties, also fence lines, roads, topo, size and type of witness trees and if off road - best way to arrive at corner.

