

PUBLIC LAND SURVEY MONUMENT RECORD

TYPE OF MONUMENT: HARRISON
 ADAMS COUNTY COORDINATES, NAD 83 (2007)

N. 248103.914

E. 551913.512

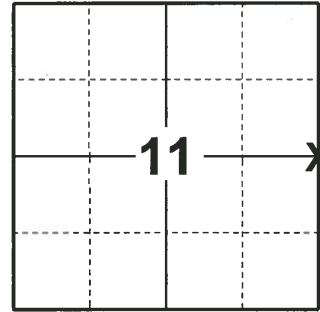
ELEVATION- - - - - DATUM - - - - -

FIELD WORK DATE: 12/16/2019

BASIS FOR MONUMENT LOCATION

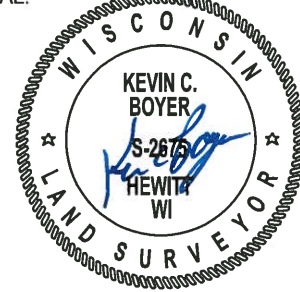
1977 - PLS 1103 RAN EDM/TRANSIT TRAVERSE AROUND SECTIONS 1 AND 12, AND PARTS OF ADJOINING SECTIONS TO DETERMINE SEARCH AREAS. INVESTIGATION YIELDED NO EVIDENCE OF THE ORIGINAL CORNER, AND REMONUMENTATION, OR ANY WITNESS TREES. RELOCATED CORNER BY SINGLE PROPORTIONATE MEASURE ON LINE BETWEEN ADJACENT SECTION CORNERS. SET HARRISON MONUMENT.

2019 - PLS 2675 FOUND HARRISON 2" ABOVE THE GROUND AND 2 WITNESS TREES. THE MONUMENT AGREES WITH BOTH WITNESS TREES. ACCEPTED THE HARRISON AS THE CORNER LOCATION. SET 4 NEW TIES AND MEASURED TO THE EXISTING WITNESS TREES.



LOCATION
 (INDICATE CORNER BY "X")

SEAL:

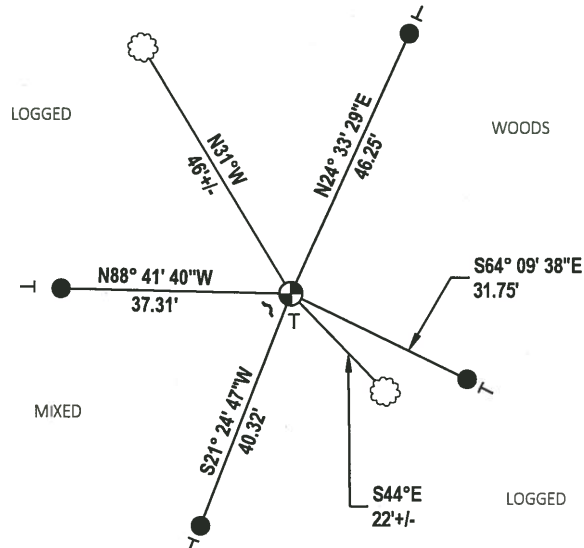
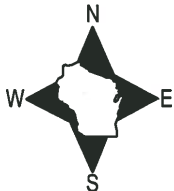


DATA SHOWN HERE ON THIS TIE SHEET IS CORRECT AND COMPLETE TO THE BEST OF MY KNOWLEDGE AND BELIEF.

PROFESSIONAL LAND SURVEYOR

DATE 1/9/2020

- TIE SKETCH -



- SET 3/4" x 18" IRON REBAR, 1.50#/FT
- ⊕ FOUND HARRISON MONUMENT
- ┌ STEEL FENCE POST
- └ VINYL "T" POST
- ☁ WITNESS TREE

ADAMS COUNTY

Survey Monument Record

TYPE OF MONUMENT: HARRISON

STATE PLANE COORDINATES: N _____

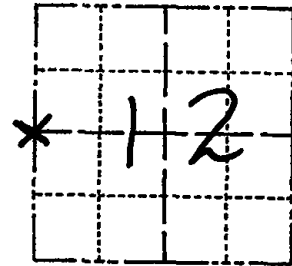
E _____

ELEVATION — M.S.L. DATUM: _____

THETA ANGLE: _____

FIELD BOOK: 39 PAGE 30

CORNER NO. 39
SECTION 12
TOWN 18
RANGE 6



LOCATION
(Indicated by 'X')

SEAL:



BASIS FOR MONUMENT LOCATION

(Use reverse side if necessary)

Show info such as: History of corner, with reference to Vol. and pg. dates, surveyor; exact description of monument replaced; if location computed, by taped or EDM traverse; landowner remarks, etc.

Ran EDM/transit traverse around Sections 1 and 12, and parts of adjoining sections to determine search areas.

Investigation yielded no evidence of the original corner, any remonumentation, or any witness trees.

Relocated corner by single proportionate measure on line between adjacent section corners.

Set Harrison Monument on 12-15-76.

- OK 10-30-78 RN-DA
- " 4-19-83 GR-SS
- " 5-11-88 GR-SS
- 1 NEW TIE 1-11-93 JG-SS
- ALL OK 4-27-98 JFS

CERTIFIED CORRECT:

Dale Chayer
Registered Land Surveyor
DATE: 7-5-77

TIE SKETCH 05-27-08 2 NEW TIES SJS

(Show at least four ties)

NOTE

Ties in trees to nail in disc.

OAK WILT & WIND DAMAGE

