

12 SECTION 18 TOWN 06 RANGE

ADAMS COUNTY

COUNTY CORNER NO: 40
 ROMPORTOL ID: 41806122000

PUBLIC LAND SURVEY MONUMENT RECORD

TYPE OF MONUMENT: HARRISON
 ADAMS COUNTY COORDINATES, NAD 83 (2007)

N. 248216.743

E. 557159.637

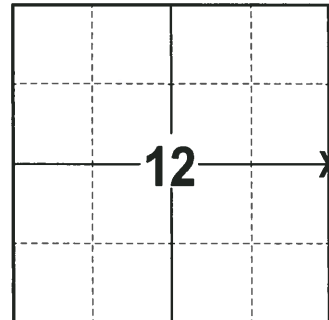
ELEVATION- --- DATUM ---

FIELD WORK DATE: 01/12/2018

BASIS FOR MONUMENT LOCATION

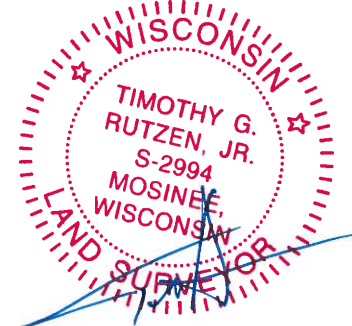
2013 - PLS 1478 RE-DRAFTED PRIOR TIE SHEET BY DALE C. HAGEN FROM 1977. HAGEN RAN EDM/TRANSIT TRAVERSE AROUND SECTIONS 1, 12, AND PARTS OF ADJOINING SECTIONS TO DETERMINE SEARCH AREAS FOR INVESTIGATION. COULD NOT FIND ANY EVIDENCE OF THE ORIGINAL CORNER, REMONUMENTATION OR ANY WITNESS MONUMENTS. RELOCATED THE CORNER BY SINGLE PROPORTIONATE MEASUREMENT ON A LINE BETWEEN ADJACENT SECTION CORNERS. SET A HARRISON MONUMENT AND TIED OUT.

2017 - PLS 2994 FOUND A HARRISON MONUMENT 4" ABOVE THE GROUND SURFACE. FOUND NO EVIDENCE OF ANY WITNESSES. ACCEPTED THE HARRISON MONUMENT AS THE BEST EVIDENCE OF THE CORNER LOCATION. SET 4 NEW TIES AND MEASURED TO THE TIES.



LOCATION
 (INDICATE CORNER BY "X")

SEAL:



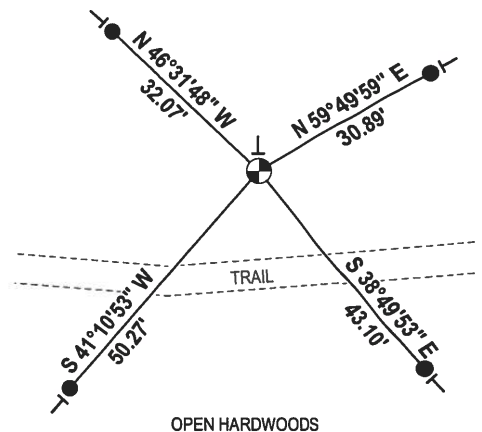
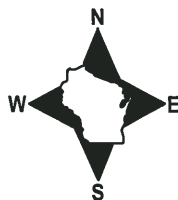
DATA SHOWN HERE ON THIS TIE SHEET IS CORRECT AND COMPLETE TO THE BEST OF MY KNOWLEDGE AND BELIEF.

PROFESSIONAL LAND SURVEYOR

DATE 2-2-18

- TIE SKETCH -

NOTE: THE CORNER FALLS 21"± NORTH OF THE CENTERLINE OF THE TRAIL.



- 3/4" x 18" IRON REBAR SET, 1.50#/FT
- ⊕ HARRISON FOUND
- └ VINYL "T" POST

