

08 SECTION 18 TOWN 06 RANGE

ADAMS COUNTY

COUNTY CORNER NO: 45
ROMPORTOL ID: 41806080000

PUBLIC LAND SURVEY MONUMENT RECORD

TYPE OF MONUMENT: HARRISON (BROKEN-TOP)
ADAMS COUNTY COORDINATES, NAD 83 (2007)

N. 245307.844

E. 536130.470

ELEVATION- _____ DATUM _____

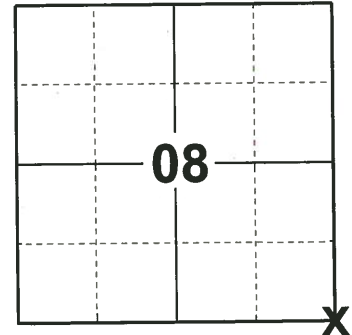
FIELD WORK DATE: 06/04/2019

BASIS FOR MONUMENT LOCATION

1978 - PLS 1103 RAN EDM/T2 TRAVERSE AROUND SECTION 9 AND PARTS OF ADJOINING SECTIONS TO DETERMINE SEARCH AREA FOR INVESTIGATION. EXCAVATION WITH BACKHOE BY ANTHONY KIEDROWSKI, ADAMS COUNTY SURVEYOR, YIELDED NO EVIDENCE FOR THE ORIGINAL CORNER OR ANY SUBSEQUENT REMONUMENTATION. COULD FIND NO EVIDENCE OF ANY BEARING TREES. RELOCATED CORNER BY DOUBLING OVER DISTANCE BETWEEN SE AND S1/4 OF SECTION 9, AND DISTANCE BETWEEN NW AND W 1/4 CORNER OF SECTION 9. THIS LOCATION MATCHES SURROUNDING OCCUPATION. SET HARRISON MONUMENT.

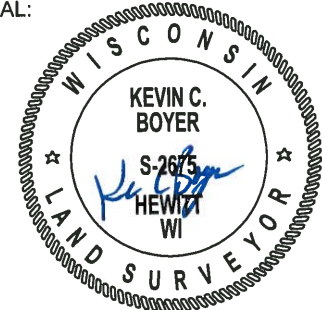
2013 - PLS 1478 REDREW TIE SHEET.

2019 - PLS 2675 FOUND A HARRISON MONUMENT WITH A BROKEN-TOP 8" BELOW THE ROAD SURFACE AND 3 WITNESSES. THE MONUMENT AGREES WITH THE EXISTING WITNESSES. ACCEPTED THE HARRISON MONUMENT WITH A BROKEN-TOP AS THE CORNER LOCATION. SET 4 NEW TIES. MEASURED TO THE TIES AND WITNESSES.



LOCATION
(INDICATE CORNER BY "X")

SEAL:



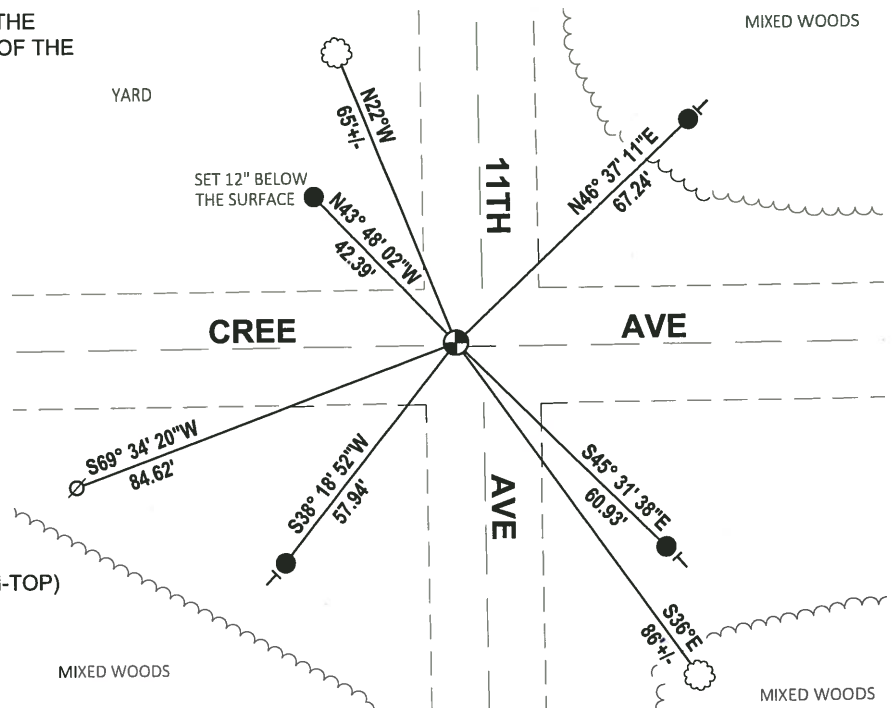
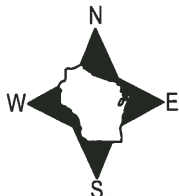
DATA SHOWN HERE ON THIS TIE SHEET IS CORRECT AND COMPLETE TO THE BEST OF MY KNOWLEDGE AND BELIEF.

PROFESSIONAL LAND SURVEYOR

DATE 8/2/19

TIE SKETCH

NOTE: THE CORNER FALLS 1'± NORTH OF THE CENTERLINE OF CREE AVE AND 6'± WEST OF THE CENTERLINE OF 11TH AVE.

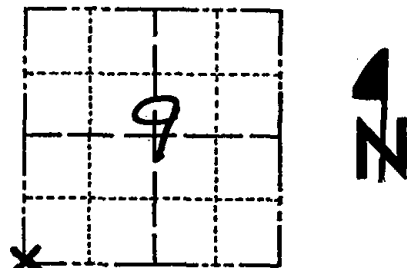


- SET 3/4" x 18" IRON REBAR, 1.50#/FT
- ⊕ FOUND HARRISON MONUMENT (BROKEN-TOP)
- ⊘ WITNESS POWER POLE
- | VINYL "T" POST
- ☼ WITNESS TREE

Government Land Corner Certificate

ADAMS County
 TYPE OF MONUMENT: HARRISON
 STATE PLANE COORDINATES: N _____
 E _____
 ELEVATION — M.S.L. DATUM: _____
 THETA ANGLE: _____
 FIELD BOOK: _____ PAGE _____
 DRAWN BY: G RHINEHART

CORNER NO. 45
 SECTION 9
 TOWN 18
 RANGE 6



LOCATION
(Indicated by 'X')

BASIS FOR MONUMENT LOCATION

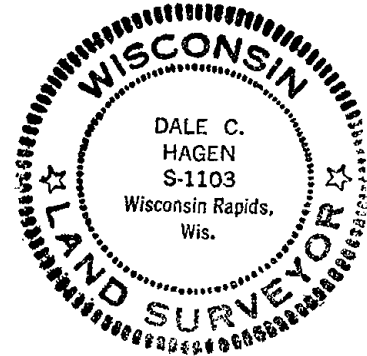
Show info such as: History of corner, with reference to Vol. and pg., dates, surveyor; exact description of monument replaced; if location computed, by taped or EDM traverse; landowner remarks, etc. (Use reverse side if necessary)

Ran EDM/T2 traverse around Section 9 and parts of adjoining Sections to determine search area for investigation.

Excavation with backhoe by Anthony Kiedrowski, Adams County Surveyor, yielded no evidence of the original corner or any subsequent remonumentation. Could find no evidence of any bearing trees.

SE Relocated corner by doubling over distance between SW and S $\frac{1}{4}$ corner of Section 9, and distance between NW and W $\frac{1}{4}$ corner of Section 9. This location matches surrounding occupation.

SEAL:



DATA SHOWN HERE ON
CERTIFIED CORRECT:

Dale C. Hagen
Registered Land Surveyor

DATE: January 3, 1978

TIE SKETCH

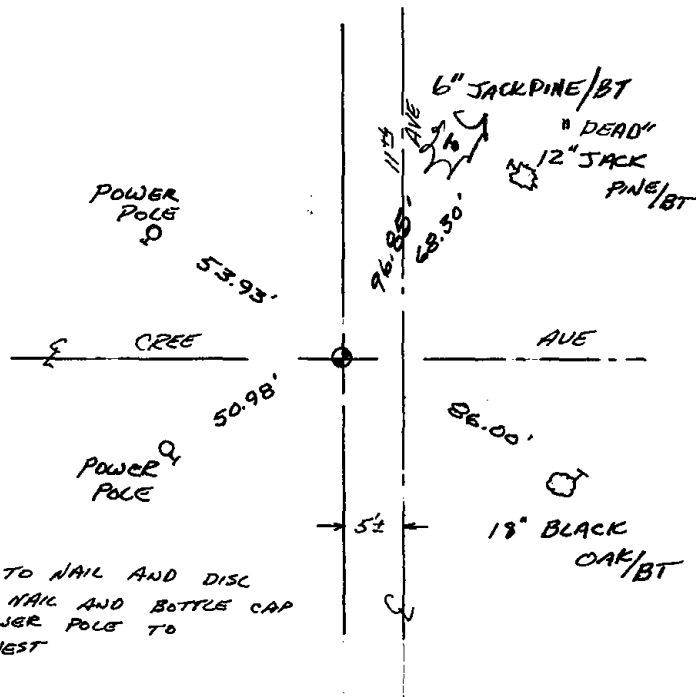
Show at least four ties, also fence lines, roads, topo, size and type of witness trees' and if off road - best way to arrive at corner.

NOTE

Ties in trees to nail in disc.

MAINTENANCE RECORD

Date	Init.	Remarks
3-4-83	SS	OK.
2-23-88	GR-SS	"
7-30-92	JG-BS	"
2-11-98	JG	OK
12-17-02	JG	1-NEW MON. OK
11-27-07	JG	OK



NOTE:
TIES TO NAIL AND DISC EXCEPT NAIL AND BOTTLE CAP IN POWER POLE TO NORTHWEST