

09
SECTION

18
TOWN

06
RANGE

ADAMS COUNTY

COUNTY CORNER NO: 47

ROMPORTOL ID: 41806090000

PUBLIC LAND SURVEY MONUMENT RECORD

TYPE OF MONUMENT: HARRISON (BROKEN-TOP)
ADAMS COUNTY COORDINATES, NAD 83 (2007)

N. 245359.233

E. 541388.663

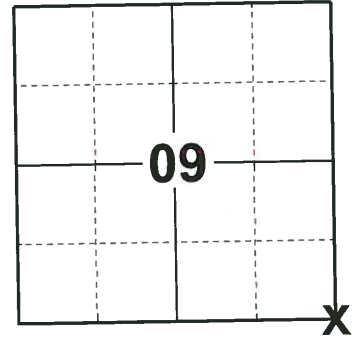
ELEVATION- _____ DATUM _____

FIELD WORK DATE: 06/04/2019

BASIS FOR MONUMENT LOCATION

1974 - PLS 1103 EXCAVATED WITH A BACKHOE YIELDED EVIDENCE OF REMAINS OF WOOD DRIVEN STAKE. TRAVERSE OF SECTION 15 AND ADJACENT SECTIONS SHOWED THIS TO BE THE PROPER LOCATION. REPLACED WITH HARRISON MONUMENT.

2019 - PLS 2675 FOUND A HARRISON MONUMENT WITH A BROKEN-TOP 10" BELOW THE ROAD SURFACE AND 2 WITNESSES. THE MONUMENT AGREES WITH THE EXISTING WITNESSES. ACCEPTED THE HARRISON MONUMENT WITH A BROKEN-TOP AS THE CORNER LOCATION. SET 4 NEW TIES. MEASURED TO THE TIES AND WITNESSES.



LOCATION

(INDICATE CORNER BY "X")

SEAL:



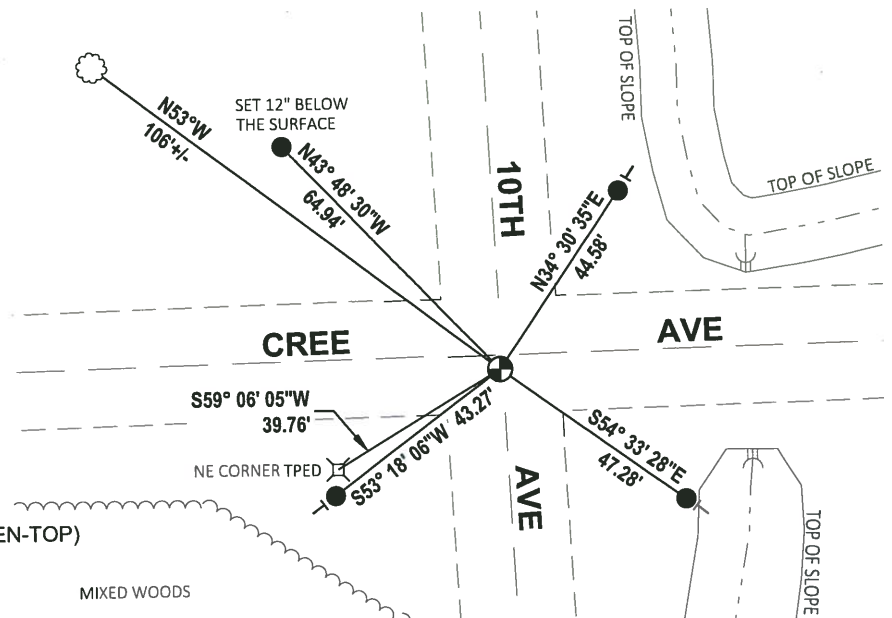
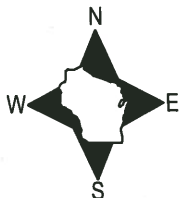
DATA SHOWN HERE ON THIS TIE SHEET IS CORRECT AND COMPLETE TO THE BEST OF MY KNOWLEDGE AND BELIEF.

PROFESSIONAL LAND SURVEYOR

DATE 8/2/19

TIE SKETCH

NOTE: THE CORNER FALLS 3'± SOUTH OF THE CENTERLINE OF CREE AVE AND 0.5'± WEST OF THE CENTERLINE OF 10TH AVE.



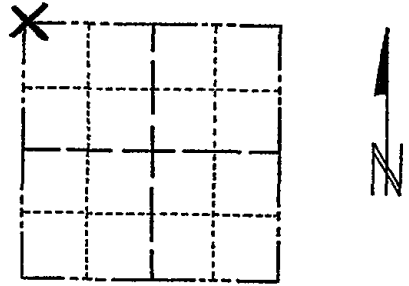
- SET 3/4" x 18" IRON REBAR, 1.50#/FT
- ⊙ FOUND HARRISON MONUMENT (BROKEN-TOP)
- ┊ VINYL "T" POST
- ☁ WITNESS TREE

ADAMS COUNTY

Survey Monument Record

TYPE OF MONUMENT: 30" HARRISON
 STATE PLANE COORDINATES: N _____
 E _____
 ELEVATION — M.S.L. DATUM: _____
 THETA ANGLE: _____
 FIELD BOOK: 111 PAGE 15

CORNER NO. 370
 SECTION 15
 TOWN 18
 RANGE 6



LOCATION
(Indicated by 'X')

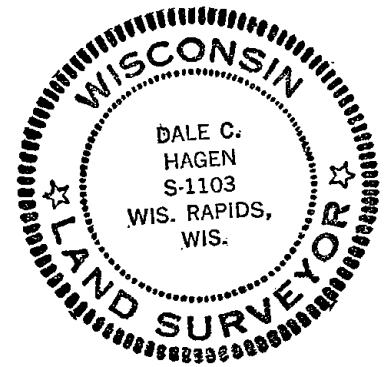
SEAL:

BASIS FOR MONUMENT LOCATION

(Use reverse side if necessary)

Show info such as: History of corner, with reference to Vol. and pg, dates, surveyor; exact description of monument replaced; if location computed, by taped or EDM traverse; landowner remarks, etc.

Excavation with backhoe yielded evidence of remains of wood driven stake. Traverse of Section 15 and adjacent sections showed this to be the proper location. Replaced with Harrison monument.



OK 7-18-78 PK-55
 3-4-83 GR-55 1 NEW TIE
 2-2-88 " " OK
 7-30-92 SG-BS O.K.
 1-NEW, 2-25-98, -JG (TOP BROKEN OFF MON.)
 OK, 12-17-02-JG

CERTIFIED CORRECT:

Dale C. Hagen
 Registered Land Surveyor

DATE: May 1, 1974

TIE SKETCH OK, 11-27-07-JG

(Show at least four ties)

