

11 SECTION 18 TOWN 06 RANGE

ADAMS COUNTY

COUNTY CORNER NO: 51
 ROMPORTOL ID: 4180611000

PUBLIC LAND SURVEY MONUMENT RECORD

TYPE OF MONUMENT: HARRISON (BROKEN-TOP)
 ADAMS COUNTY COORDINATES, NAD 83 (2007)

N. 245463.917
 E. 551928.157

ELEVATION- _____ DATUM _____

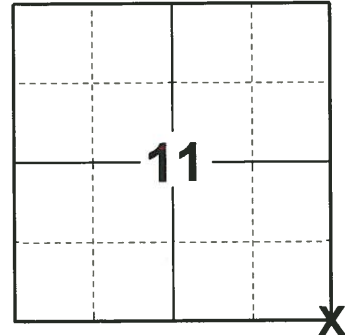
FIELD WORK DATE: 06/03/2019

BASIS FOR MONUMENT LOCATION

1976 - PLS 1103 RAN EDM/TRANSIT TRAVERSE AROUND SECTION 1 AND 12, AND PORTIONS OF SECTIONS SURROUNDING TO DETERMINE SEARCH AREA. EXCAVATION WITH BACKHOE YIELDED NO EVIDENCE OF THE ORIGINAL CORNER OR ANY REMONUMENTATION. SET HARRISON OPPOSITE FENCE LINE TO THE SOUTH AFTER ANALYSIS OF THE EXISTING POSSESSION LINES, FIELD EVIDENCE AND ORIGINAL NOTES.

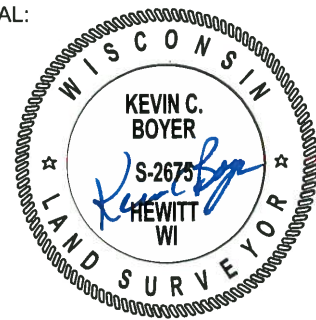
2013 - PLS 1478 REDREW TIE SHEET.

2019 - PLS 2675 FOUND A HARRISON MONUMENT WITH A BROKEN-TOP 8" BELOW THE ROAD SURFACE, 2 TIES AND 3 WITNESSES. THE MONUMENT AGREES WITH THE EXISTING TIES AND WITNESSES. ACCEPTED THE HARRISON MONUMENT WITH A BROKEN-TOP AS THE CORNER LOCATION. SET 2 NEW TIES AND MEASURED TO THE TIES AND WITNESSES.



LOCATION
 (INDICATE CORNER BY "X")

SEAL:



DATA SHOWN HERE ON THIS TIE SHEET IS CORRECT AND COMPLETE TO THE BEST OF MY KNOWLEDGE AND BELIEF.

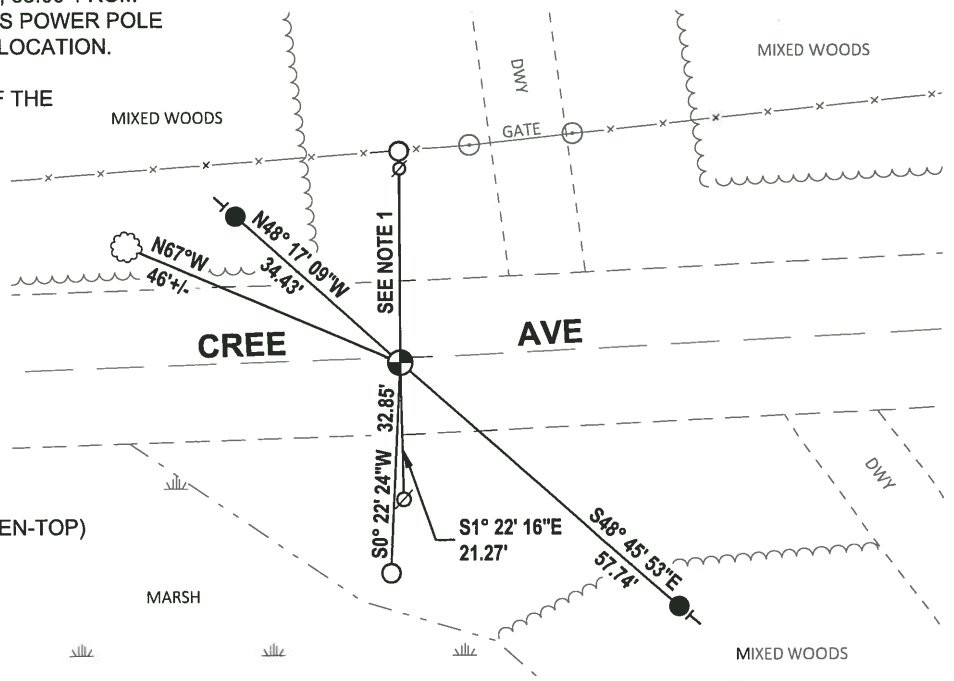
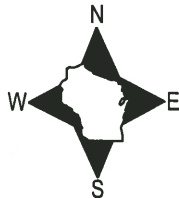
PROFESSIONAL LAND SURVEYOR

DATE 8/2/19

TIE SKETCH

NOTE 1: THE 3/4" IRON ROD IS N0° 06' 59"W, 33.00' FROM THE CORNER LOCATION AND THE WITNESS POWER POLE IS N0° 01' 00"W, 31.17' FROM THE CORNER LOCATION.

NOTE 2: THE CORNER FALLS 1'± SOUTH OF THE CENTERLINE OF CREE AVE.



- SET 3/4" x 18" IRON REBAR, 1.50#/FT
- FOUND 3/4" IRON ROD
- ⊕ FOUND HARRISON MONUMENT (BROKEN-TOP)
- ⊗ WITNESS POWER POLE
- ┆ VINYL "T" POST
- ☁ WITNESS TREE

ADAMS COUNTY

Survey Monument Record

TYPE OF MONUMENT: Harrison

STATE PLANE COORDINATES: N _____

E _____

ELEVATION — M.S.L. DATUM: _____

THETA ANGLE: _____

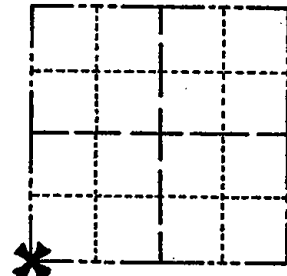
FIELD BOOK: 37 PAGE 50

CORNER NO. 1047

SECTION 12

TOWN 18

RANGE 6



LOCATION
(Indicated by 'X')



BASIS FOR MONUMENT LOCATION

(Use reverse side if necessary)

Show info such as: History of corner, with reference to Vol. and pg, dates, surveyor; exact description of monument replaced; if location computed, by taped or EDM traverse; landowner remarks, etc.

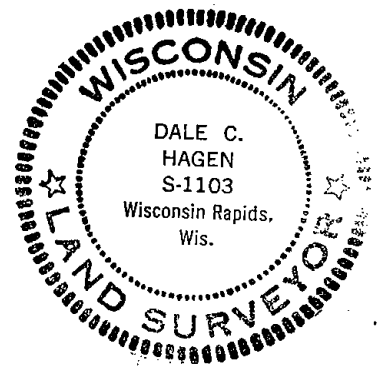
SEAL:

Ran EDM/transit traverse around Sections 1 and 12, and portions of Sections surrounding to determine search areas.

Excavation with backhoe yielded no evidence of the original corner or any remonumentation.

Set corner opposite fenceline to the South after analysis of the existing possession lines, field evidence and original notes.

Set 6-17-76.



- OK 11-22-78 RN-SS
- 3-17-83 GR-SS 2 NEW TIES
- 2-23-88 " " OK
- 8-7-92, JG-BS, 1-GONE, 2 NEW TIES, TOP OF MON (BROKEN OFF)
- OK, 2-25-98-JG

CERTIFIED CORRECT:

Dale C Hagen

Registered Land Surveyor

DATE: 9-20-76

TIE SKETCH

(Show at least four ties)

NOTE:

Ties in trees to 2" Black Oak/ST
Nail and disc in blaze.

