

13
SECTION

18
TOWN

05
RANGE

ADAMS COUNTY

COUNTY CORNER NO: 60

ROMPORTOL ID: 41805132000

PUBLIC LAND SURVEY MONUMENT RECORD

TYPE OF MONUMENT: HARRISON (BROKEN-TOP)
ADAMS COUNTY COORDINATES, NAD 83 (2007)

N. 242634.234

E. 525695.059

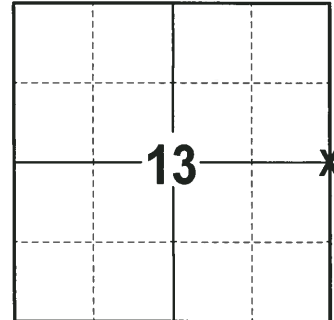
ELEVATION- _____ DATUM _____

FIELD WORK DATE: 01/05/2018

BASIS FOR MONUMENT LOCATION

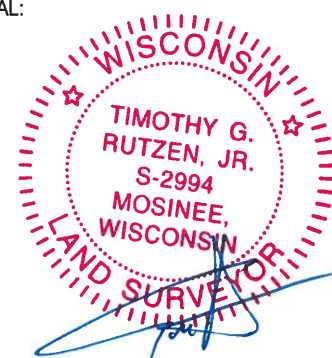
1979 - PLS 1478 RAN EDM/T2 TRAVERSE OF THE RANGE LINE BETWEEN R5E AND R6E FROM THE SW CORNER OF SECTION 19-18-6 TO THE NW OF SECTION 6-19-6 TO DETERMINE SEARCH AREAS. INVESTIGATION AT THIS CORNER YIELDED STUMP HOLES THAT WERE VERY CLOSE TO MATCHING THE LOCATION OF THE BEARING TREES RECORDED IN THE ORIGINAL NOTES. EXCAVATION BY HAND UNEARTHED THE ROTTED REMAINS OF A 4" DIAMETER WOOD POST AT THE RECORD DISTANCES AND BEARINGS FROM THE FACES OF THE STUMP HOLES. THE POSITION OF THE POST WAS ACCEPTED AS THE CORNER AND MONUMENTED WITH A STANDARD HARRISON. 1"X24" IRON PIPES WERE DRIVEN IN THE FACE OF THE STUMP HOLES TO PRESERVE THEIR LOCATIONS.

2017 - PLS 2994 FOUND A HARRISON MONUMENT WITH A BROKEN-TOP 2" BELOW THE GROUND SURFACE, 2 TIES AND 1 WITNESS. THE MONUMENT AGREES WITH THE EXISTING TIES AND WITNESS. ACCEPTED THE HARRISON MONUMENT WITH A BROKEN-TOP AS THE CORNER LOCATION. SET 2 NEW TIES AND MEASURED TO THE TIES AND WITNESS.



LOCATION
(INDICATE CORNER BY "X")

SEAL:



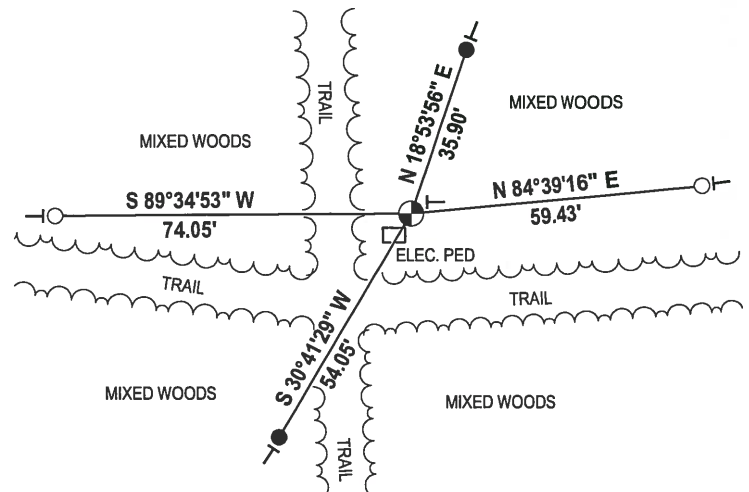
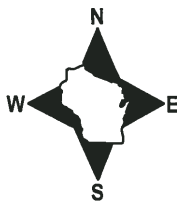
DATA SHOWN HERE ON THIS TIE SHEET IS CORRECT AND COMPLETE TO THE BEST OF MY KNOWLEDGE AND BELIEF.

PROFESSIONAL LAND SURVEYOR

DATE 2-2-18

- TIE SKETCH

NOTE: THE SE CORNER OF THE ELECTRIC PED IS S12°30'57"W, 6.20'.

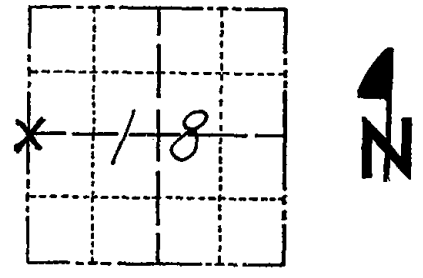


- 3/4" x 18" IRON REBAR SET, 1.50#/FT
- 1" O.D. IRON PIPE FOUND
- ⊕ HARRISON (BROKWN-TOP) FOUND
- └ VINYL "T" POST

Government Land Corner Certificate

ADAMS County
 TYPE OF MONUMENT: HARRISON
 STATE PLANE COORDINATES: N _____
 E _____
 ELEVATION — M.S.L. DATUM: _____
 THETA ANGLE: _____
 FIELD BOOK: 69 PAGE 134
 DRAWN BY: JOHN S. KEDROWSKI

CORNER NO. 54
 SECTION 18
 TOWN 18 N.
 RANGE 6 E.



LOCATION
(Indicated by 'X')

BASIS FOR MONUMENT LOCATION

Show info such as: History of corner, with reference to Vol. and pg., dates, surveyor; exact description of monument replaced; if location computed, by taped or EDM traverse; landowner remarks, etc. (Use reverse side if necessary)

Ran EDM/T2 traverse of Range Line between R5E and R6E from the SW corner of Sec. 19-18-6 to the NW of Sec. 6-19-6 to determine search areas.

Investigation at this corner yielded very closely matching the location of the BT's recorded in the original notes. Excavation by hand unearthed the rotted remains of a 4" diameter wood post at the record distances and bearings from the faces of the stump holes.

The position of the post was accepted as the corner and monumented with a standard Harrison. 1"X24" Iron Pipes were driven in the face of the stump holes to preserve their locations.

SEAL:



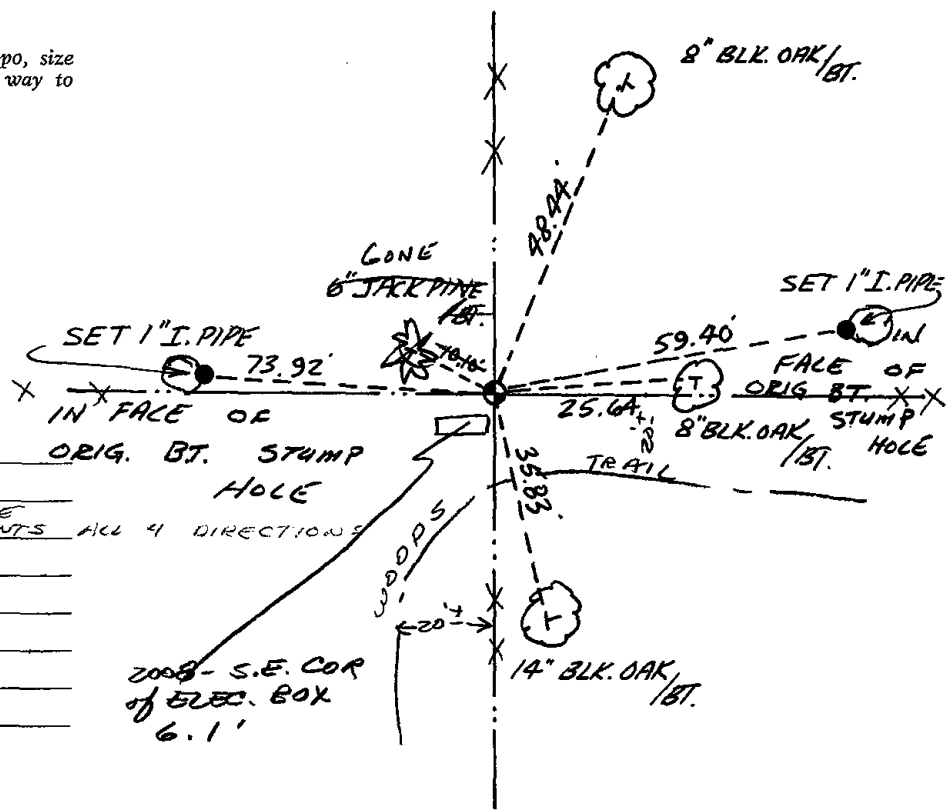
DATA SHOWN HERE ON CERTIFIED CORRECT:

Gregory P Rhinehart
 Registered Land Surveyor

DATE: Jan 2, 79

TIE SKETCH

Show at least four ties, also fence lines, roads, topo, size and type of witness trees' and if off road - best way to arrive at corner.



MAINTENANCE RECORD

Date	Init.	Remarks
3-15-83	GR-SS	OK - FENCE REMNANTS ALL 4 DIRECTIONS
8-11-92	JG-BS	1-GONE, MON. OK
2-24-98	JG	OK
12-17-02	JG	OK
9-8-08	SS	1 NEW TIE