

PUBLIC LAND SURVEY MONUMENT RECORD

TYPE OF MONUMENT: HARRISON (BROKEN-TOP)
 ADAMS COUNTY COORDINATES, NAD 83 (2007)

N. 242691.357

E. 536164.731

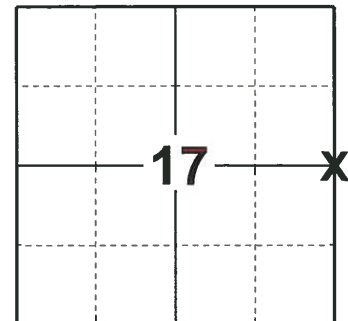
ELEVATION- _____ DATUM _____

FIELD WORK DATE: 06/06/2019

BASIS FOR MONUMENT LOCATION

1974 - PLS 1103 EXCAVATED WITH BACKHOE YIELDING 1/2" X24" IRON PIPE ALONG SIDE OF MACHINERY BRACKET WEIGHTING APPROXIMATELY 5 POUNDS. THIS LOCATION WAS INDICATED TO BE THE CORRECT LOCATION OF THE QUARTER CORNER BY EDWARD VIKTORA, AGE APPROX. 75, A LIFELONG RESIDENT OF THE NEARBY FARM. HE INDICATED THAT HIS FATHER HAD REPLACED THE STONE THAT HAD BEEN AT THIS LOCATION. HE ALSO POINTED OUT THE LOCATION OF THE ORIGINAL ROTTING BEARING TREE STUMP WITH WRITING STILL LEGIBLE.

2019 - PLS 2675 FOUND HARRISON (BROKEN-TOP) 6" BELOW THE ROAD SURFACE AND 3 WITNESSES. THE MONUMENT AGREES WITH THE EXISTING WITNESSES. ACCEPTED THE HARRISON (BROKEN-TOP) AS THE CORNER LOCATION. SET 4 NEW TIES AND MEASURED TO THE EXISTING WITNESSES AND TIES.



LOCATION

(INDICATE CORNER BY "X")

SEAL:



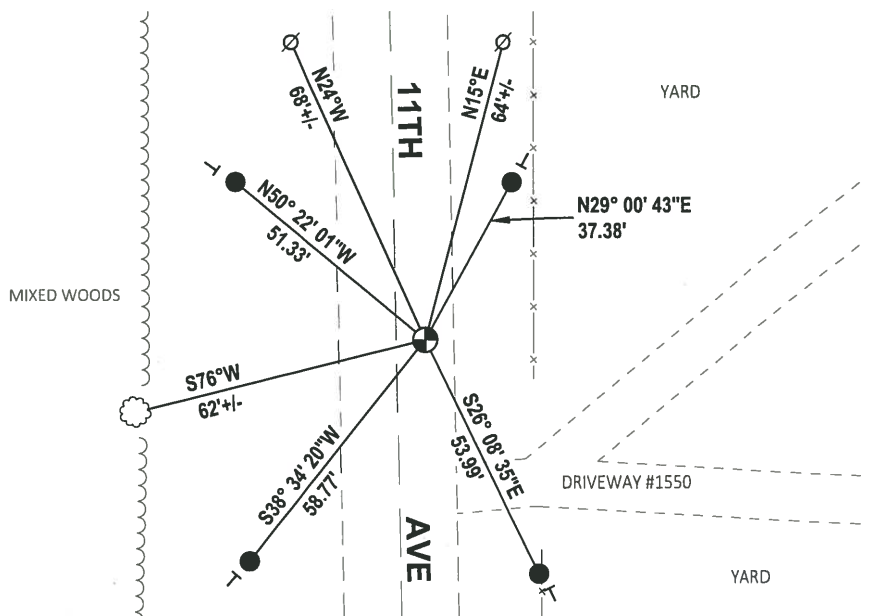
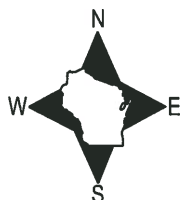
DATA SHOWN HERE ON THIS TIE SHEET IS CORRECT AND COMPLETE TO THE BEST OF MY KNOWLEDGE AND BELIEF.

PROFESSIONAL LAND SURVEYOR

DATE 8/2/19

TIE SKETCH

NOTE: THE CORNER FALLS 6'± EAST OF THE CENTERLINE OF 11TH AVE.



- SET 3/4" x 18" IRON REBAR, 1.50#/FT
- ⊕ FOUND HARRISON (BROKEN-TOP) MONUMENT
- ⊗ WITNESS POWER POLE
- ⊥ VINYL "T" POST
- ☁ WITNESS TREE

ADAMS COUNTY

Survey Monument Record

CORNER NO. 374
 SECTION 16
 TOWN 18 N
 RANGE 6 E

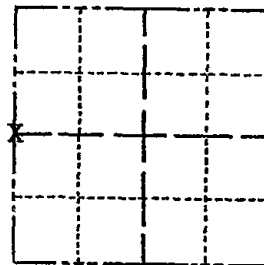
TYPE OF MONUMENT: STANDARD HARRISON

STATE PLANE COORDINATES: N _____
E _____

ELEVATION — M.S.L. DATUM: _____

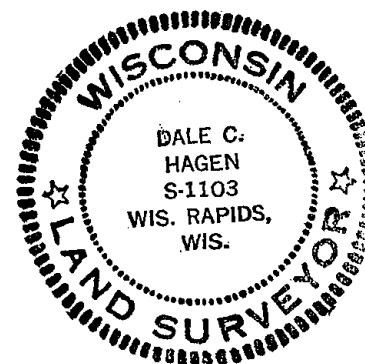
THETA ANGLE: _____

FIELD BOOK: 111 PAGE 11



LOCATION
(Indicated by 'X')

SEAL:



BASIS FOR MONUMENT LOCATION

(Use reverse side if necessary)

Show info such as: History of corner, with reference to Vol. and pg, dates, surveyor; exact description of monument replaced; if location computed, by taped or EDM traverse; landowner remarks, etc.

Excavation with backhoe yielded 1/2 inch by 2 1/4 inch iron pipe along side of machinery bracket weighting approximately 5 pounds.

This location was indicated to be the correct location of the Quarter corner by Edward Viktora, age approx. 75, a lifelong resident of the nearby farm. He indicated that his father had replaced the stone that had been at this location. He also pointed out the location of the original rotting bearing tree stump with the writing still ledgible.

- OK 7-10-78 PK-SS
- OK 3-4-83 SS
- " 2-23-88 GR-SS
- " 7-30-92 JG-B5
- OK 2-11-98 JG
- OK 12-17-02 JG

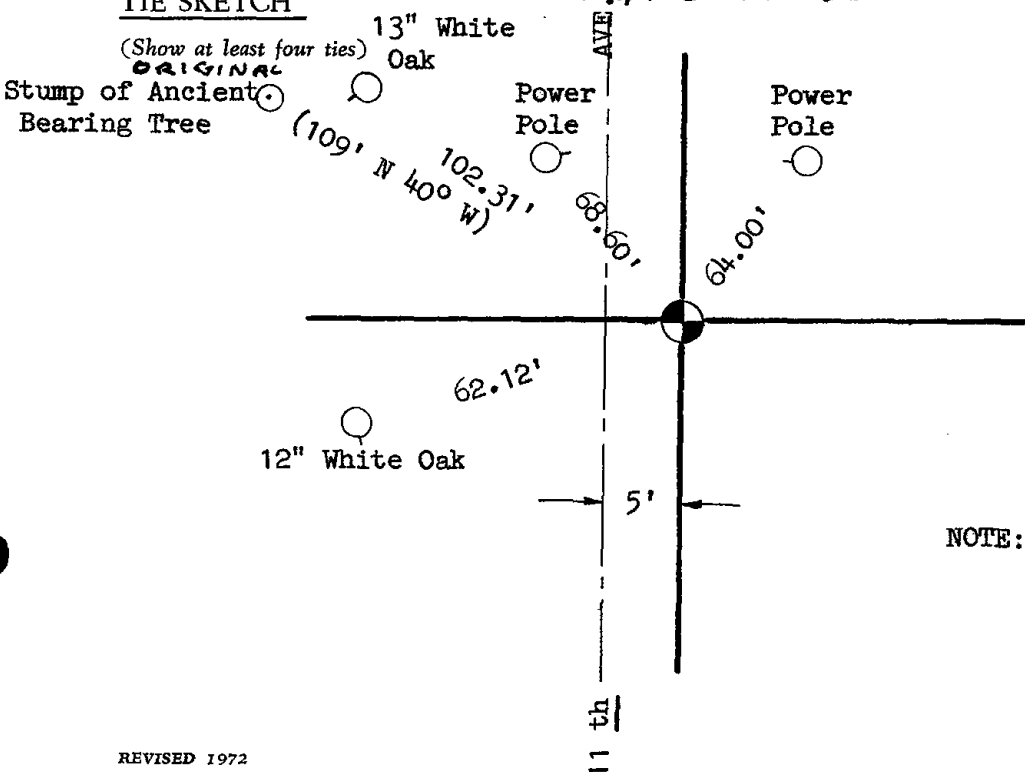
CERTIFIED CORRECT:

Dale C. Hagen
Registered Land Surveyor

DATE: April 20, 1974

TIE SKETCH

OK, 11-27-07 - JG



NOTE: All ties to nail and disc.