

18  
SECTION

18  
TOWN

06  
RANGE

# ADAMS COUNTY

COUNTY CORNER NO: 62

ROMPORTOL ID: 41806180020

## PUBLIC LAND SURVEY MONUMENT RECORD

TYPE OF MONUMENT: HARRISON (BROKEN-TOP)

ADAMS COUNTY COORDINATES, NAD 83 (2007)

N. 240000.956

E. 528336.153

ELEVATION- - - - DATUM - - - -

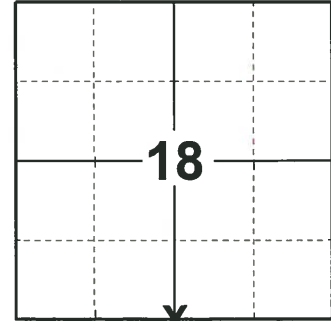
FIELD WORK DATE: 06/06/2019

### BASIS FOR MONUMENT LOCATION

1972 - PLS 878 LOCATION DETERMINED FROM 2" CAPPED IRON PIPE STAMPED WITH REFERENCE DISTANCES. SET HARRISON MONUMENT.

YEAR UNKNOWN - WISDOT LOCATED HARRISON MONUMENT AND SET 4 BERNSTEN WITNESS MONUMENTS.

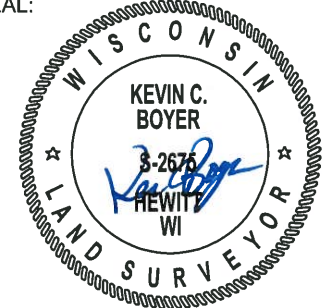
2019 - PLS 2675 FOUND A HARRISON MONUMENT WITH A BROKEN-TOP 6" BELOW THE ROAD SURFACE AND 4 TIES. THE MONUMENT AGREES WITH THE EXISTING TIES. ACCEPTED THE HARRISON MONUMENT WITH A BROKEN-TOP AS THE CORNER LOCATION AND RE-MEASURED TO THE EXISTING TIES.



**LOCATION**

(INDICATE CORNER BY "X")

SEAL:



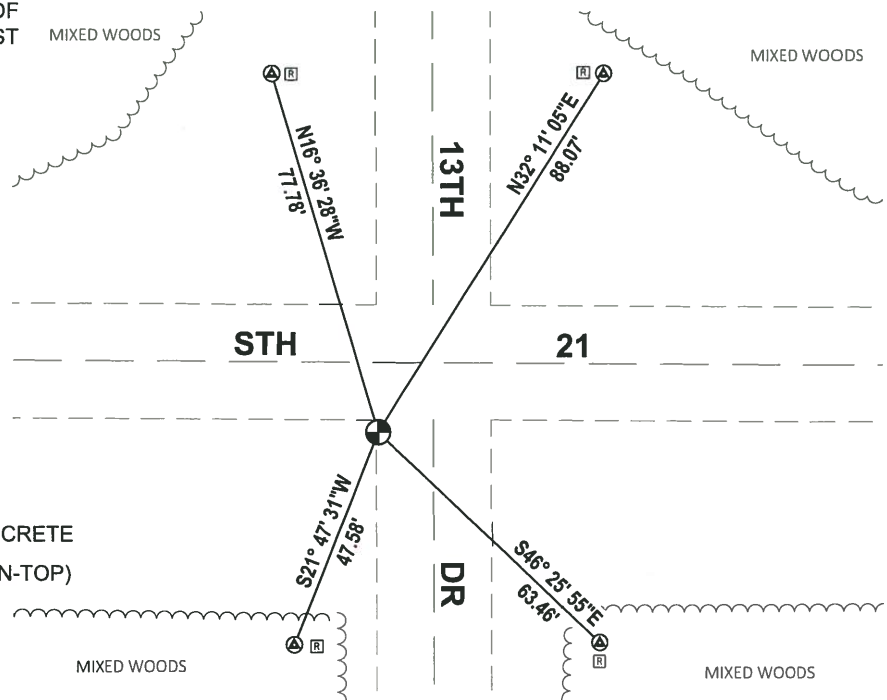
DATA SHOWN HERE ON THIS TIE SHEET IS CORRECT AND COMPLETE TO THE BEST OF MY KNOWLEDGE AND BELIEF.

PROFESSIONAL LAND SURVEYOR

DATE 8/2/19

### TIE SKETCH

NOTE: THE CORNER FALLS 14.5± SOUTH OF THE CENTERLINE OF STH 21 AND 12± WEST OF THE CENTERLINE OF 13TH DR.



- ⊙ FOUND WISDOT ALUMINUM CAP IN CONCRETE
- ⊕ FOUND HARRISON MONUMENT (BROKEN-TOP)
- Ⓡ R/W GUARD POST

62

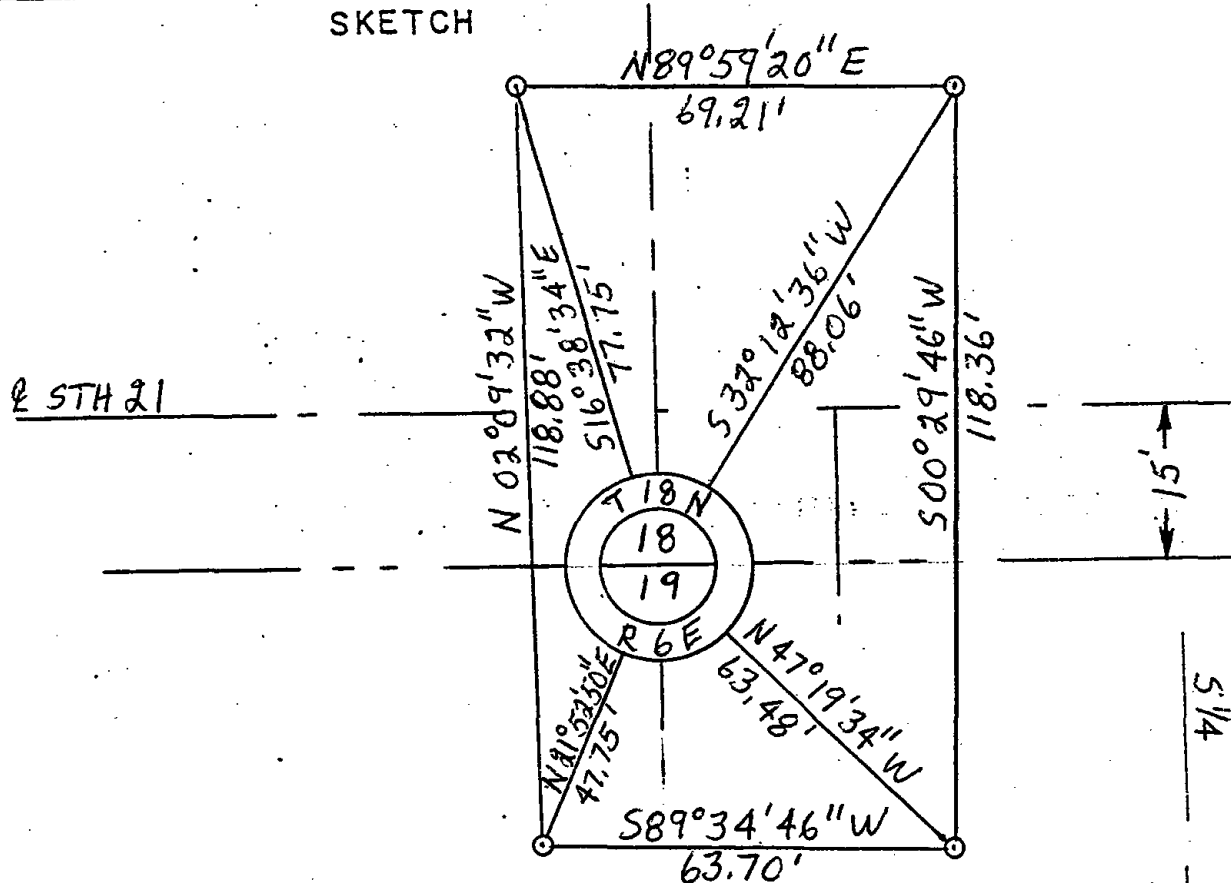
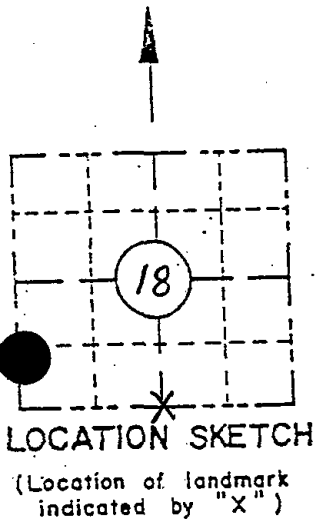
RECORD AND CERTIFICATION OF U.S. PUBLIC LAND SURVEY CONTROL STATION E.D-716-72

State of Wisconsin / Department of Transportation

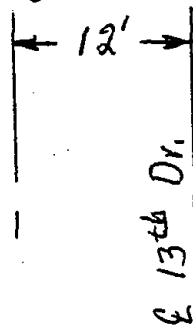
SEE ATTACHED TIE SHEET ABK 01-27-73

District <b>04</b>	Project I. D. <b>6160-07-73</b>	Located by <b>P. J. Liepitz</b>	
Corner <b>5 1/4</b>	SECTION <b>18</b>	Township <b>18 N</b>	Range (E,W) <b>6E</b> County <b>Adams</b>
Wisconsin Coordinates CORNER	East (X)	North (Y)	Elevation (Z) Zone
Control Station Name	East (X)	North (Y)	Elevation (Z) Zone
Horizontal — NORTH AMERICAN, 1927		CONTROL DATUM Vertical — MEAN SEA LEVEL, 1929 ADJUSTMENT	
Horizontal — _____ Order _____		SURVEY CONTROL Vertical — _____ Order _____	

SKETCH



I hereby certify that on the 26 day of October 1972, that I did locate the above corner which was evidenced by Harrison monument; I further certify that to perpetuate the location of such corner I did, at the exact location hereof, place a permanent marker consisting of \_\_\_\_\_; I further certify that I did establish 4 references or witness monuments consisting of Bernsten monuments located as shown above:



SEAL

Signature. Registered Land Surveyor	Registration No. S-	Title
-------------------------------------	------------------------	-------

5 1/4  
18  
18N  
6E

# ADAMS COUNTY

## Survey Monument Record

TYPE OF MONUMENT: 30" HARRISON

STATE PLANE COORDINATES: N \_\_\_\_\_

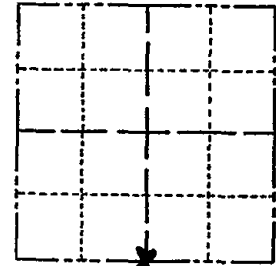
E \_\_\_\_\_

ELEVATION — M.S.L. DATUM: \_\_\_\_\_

THETA ANGLE: \_\_\_\_\_

FIELD BOOK: 106? 103 PAGE 9/144

CORNER NO. 148  
 SECTION 18  
 TOWN 18  
 RANGE 6



LOCATION  
(Indicated by 'X')

SEAL:

### BASIS FOR MONUMENT LOCATION

(Use reverse side if necessary)

Show info such as: History of corner, with reference to Vol. and pg. dates, surveyor; exact description of monument replaced; if location computed, by taped or EDM traverse; landowner remarks, etc.

Set 30" Harrison monument on July 19, 1972.

set by Anthony B. Kiedrowski R.L.S. 878

Location determined from 2" capped iron pipe stamped with reference distances as shown.



- OK 7-18-76 PK-SS
- " 3-4-82 SS
- " 2-11-88 GR-SS
- " 7-29-92 JG-B5

ALL OK, SEE ATTACHED D.O.T. SHEET, 2-24-98-JG

CERTIFIED CORRECT:

*Anthony B. Kiedrowski*  
 Registered Land Surveyor

DATE: 1-27-77

### TIE SKETCH

(Show at least four ties)

