

## PUBLIC LAND SURVEY MONUMENT RECORD

TYPE OF MONUMENT: HARRISON (BROKEN-TOP)  
 ADAMS COUNTY COORDINATES, NAD 83 (2007)

N. 240008.176

E. 530974.815

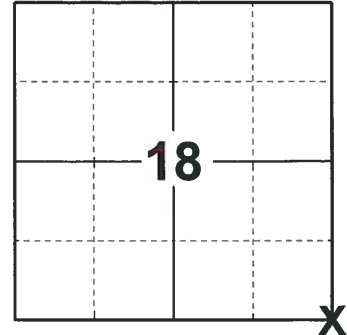
ELEVATION- \_\_\_\_\_ DATUM \_\_\_\_\_

FIELD WORK DATE: 06/11/2019

### BASIS FOR MONUMENT LOCATION

1973 - PLS 878 FOUND BOTTOM 2/3RDS OF CONCRETE MONUMENT IN PLACE. REPLACED WITH A HARRISON MONUMENT AND TIED OUT.

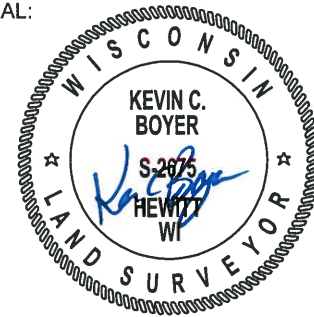
2019 - PLS 2675 FOUND A HARRISON MONUMENT WITH A BROKEN-TOP 4" BELOW THE GROUND SURFACE, 2 PROPERTY IRONS AND 2 WITNESS TREES. THE MONUMENT AGREES WITH THE EXISTING WITNESS TREES. ACCEPTED THE HARRISON MONUMENT WITH A BROKEN-TOP AS THE CORNER LOCATION. SET 3 NEW TIES AND MEASURED TO THE TIES, PROPERTY IRONS AND WITNESS TREES.



### LOCATION

(INDICATE CORNER BY "X")

SEAL:



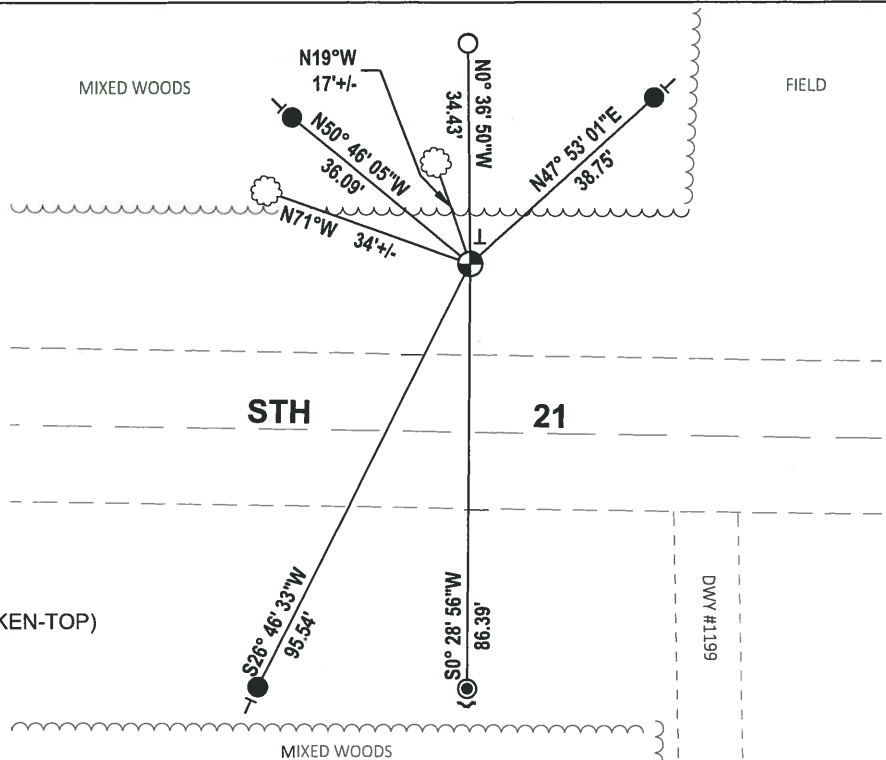
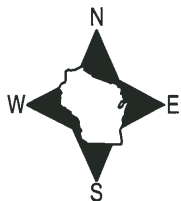
DATA SHOWN HERE ON THIS TIE SHEET IS CORRECT AND COMPLETE TO THE BEST OF MY KNOWLEDGE AND BELIEF.

PROFESSIONAL LAND SURVEYOR

DATE 8/2/19

### - TIE SKETCH

NOTE: THE CORNER FALLS 26'± NORTH OF THE CENTERLINE OF STH 21.



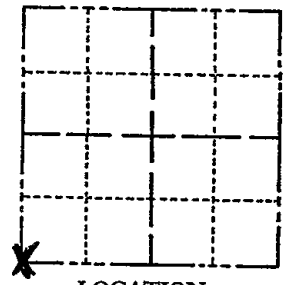
- SET 3/4" x 18" IRON REBAR, 1.50#/FT
- FOUND 3/4" IRON ROD
- ⊙ FOUND 1-1/4" IRON ROD
- ⊕ FOUND HARRISON MONUMENT (BROKEN-TOP)
- ┌ STEEL FENCE POST
- └ VINYL "T" POST
- ☼ WITNESS TREE

ADAMS COUNTY

Survey Monument Record

TYPE OF MONUMENT: 30" HARRISON
STATE PLANE COORDINATES: N
E
ELEVATION - M.S.L. DATUM:
THETA ANGLE:
FIELD BOOK: 106? PAGE ?

CORNER NO. 157
SECTION 17
TOWN 18
RANGE 6



LOCATION (Indicated by 'X')

SEAL:

BASIS FOR MONUMENT LOCATION

(Use reverse side if necessary)

Show info such as: History of corner, with reference to Vol. and pg, dates, surveyor; exact description of monument replaced; if location computed, by taped or EDM traverse; landowner remarks, etc.

Set monument

July 24, 1972

Anthony B. Kiedrowski R.L.S. 878

Found bottom 2/3rds of concrete monument in place. Replaced it with Harrison monument.



TOP SECTION BROKEN OFF 7-18-78 PK-SS
TIES OK 3-4-83 SS
2-23-88 GR-SS
7-29-92 JG-B5

CERTIFIED CORRECT:

Handwritten signature of Anthony B. Kiedrowski, Registered Land Surveyor

DATE: 1-29-73

1-GONE, 2-NEW, 2-24-98-JG
OK-2-13-83-JG-SS

TIE SKETCH

(Show at least four ties)

