

17
SECTION

18
TOWN

06
RANGE

ADAMS COUNTY

COUNTY CORNER NO.: 65

ROMPORTOL ID: 41806170000

PUBLIC LAND SURVEY MONUMENT RECORD

TYPE OF MONUMENT: SURVEY NAIL
ADAMS COUNTY COORDINATES, NAD 83 (2007)

N. 240071.263

E. 536190.219

ELEVATION- DATUM

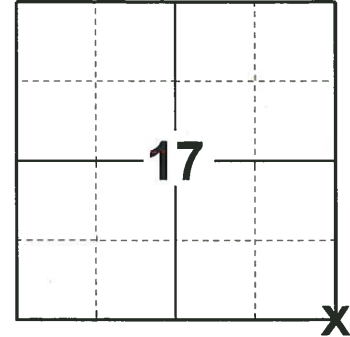
FIELD WORK DATE: 06/06/2019

BASIS FOR MONUMENT LOCATION

2014 - PLS 2643 RECALLS THE MOST RECENT TIE SHEET OF RECORD WAS FILED BY DALE HAGEN ON JANUARY 2, 1978. AT THAT TIME A P.K. NAIL WAS SET AT THE CORNER POSITION. SINCE THEN THE CORNER HAS BEEN VISITED NUMEROUS TIMES BY LOCAL SURVEYORS AS SHOWN ON THE MAINTENANCE RECORD. ON THE MAINTENANCE ON JANUARY 22, 2003 A MAG NAIL WAS IDENTIFIED AS THE CORNER.

2014 - PLS 2643 PRIOR TO THE CONSTRUCTION ON HIGHWAY 21 THE MAG NAIL WAS RECOVERED AND IDENTIFIED AS THE CORNER LOCATION. AFTER THE COMPLETION OF THE HIGHWAY CONSTRUCTION A SNM 1 BERNTSEN NAIL WAS SET AT THE CORNER LOCATION AND 4 NEW WITNESS TIES WERE SET TO REFERENCE THE CORNER LOCATION.

2019 - PLS 2675 FOUND SURVEY NAIL AND 4 TIES. REMOVED THE SURVEY NAIL AND FOUND NO OTHER EVIDENCE OF ANY ADDITIONAL MONUMENTS BELOW. THE SURVEY NAIL LOCATION AGREES WITH ALL 4 TIES. ACCEPTED THE SURVEY NAIL LOCATION AS THE CORNER LOCATION. RESET THE SURVEY NAIL AND MEASURED TO THE EXISTING TIES.



LOCATION

(INDICATE CORNER BY "X")

SEAL:



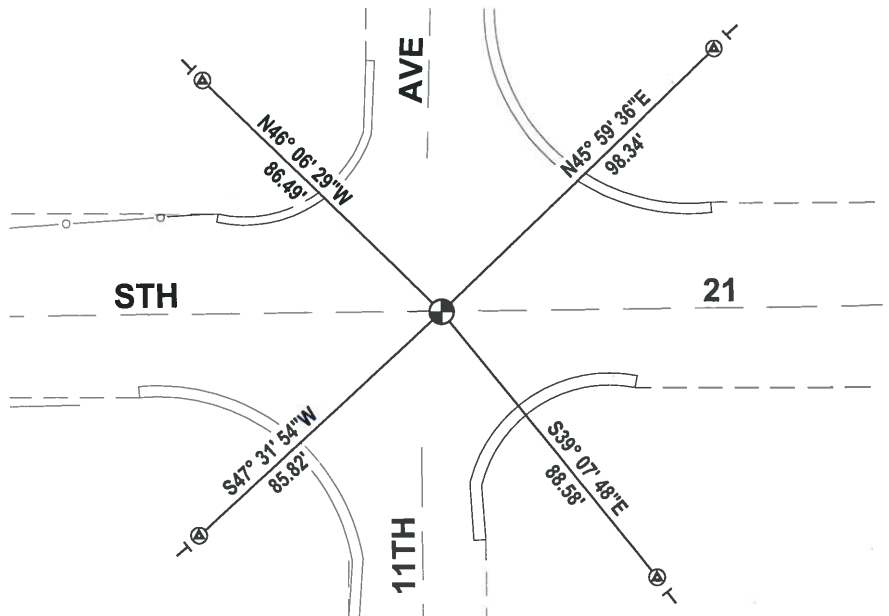
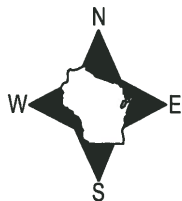
DATA SHOWN HERE ON THIS TIE SHEET IS CORRECT AND COMPLETE TO THE BEST OF MY KNOWLEDGE AND BELIEF.

PROFESSIONAL LAND SURVEYOR

DATE 8/2/19

TIE SKETCH

NOTE: THE CORNER FALLS ON THE CENTERLINE OF STH 21 AND 6± EAST OF THE CENTERLINE OF 11TH AVE.

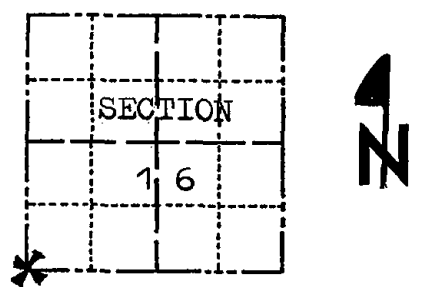


- ⊙ FOUND SDDR103 W/BRONZE CAP
- ⊕ FOUND SURVEY NAIL MONUMENT
- | VINYL "T" POST

Government Land Corner Certificate

ADAMS County
 TYPE OF MONUMENT: PK Nail in Pavement
 STATE PLANE COORDINATES: N _____
 E _____
 ELEVATION — M.S.L. DATUM: _____
 THETA ANGLE: _____
 FIELD BOOK: 57 PAGE 35
 DRAWN BY: _____

CORNER NO. 65
 SECTION 16
 TOWN 18 N
 RANGE 6 E



LOCATION (Indicated by 'X')

BASIS FOR MONUMENT LOCATION

Show info such as: History of corner, with reference to Vol. and pg., dates, surveyor; exact description of monument replaced; if location computed, by taped or EDM traverse; landowner remarks, etc. (Use reverse side if necessary)

Ran EDM/T2 traverse around Section 16 and parts of adjoining Sections to determine search area for investigation.

Did not excavate with backhoe because search area falls within the construction area of State Truk Highway '21'.

Prorated between the North Quarter corner of Section 20 and the Northeast corner of Section 21, and set this corner on the centerline of S.T.H. '21', thereby matching occupation and original distances to the South, but am about 19 feet short of the original distance to the West Quarter corner of Section 16.

Set PK on 10-17-1977.

SEAL:



DATA SHOWN HERE ON CERTIFIED CORRECT:

Dale C. Hagen
 Registered Land Surveyor

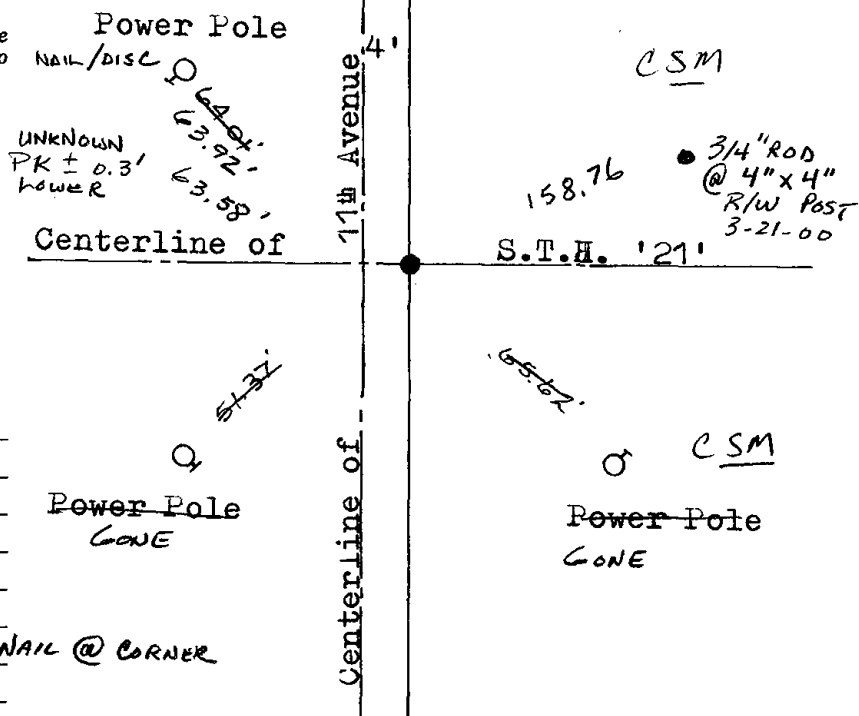
DATE: January 2, 1978

TIE SKETCH

Show at least four ties, also fence lines, roads, topo, size and type of 'witness trees' and if off road - best way to arrive at corner.

NOTE

Ties in trees to nail in disc.



MAINTENANCE RECORD

Date	Init.	Remarks
3-4-83	SS	OK
2-23-88	GR-SS	"
7-29-92	JG-BS	OK
2-11-98	JG	OK
1-22-03	JG	2-GONE, 2-NEW, MAG NAIL @ CORNER
11-27-07	JG	OK