

16
SECTION

18
TOWN

06
RANGE

ADAMS COUNTY

COUNTY CORNER NO: 66

ROMPORTOL ID: 41806160020

PUBLIC LAND SURVEY MONUMENT RECORD

TYPE OF MONUMENT: SURVEY NAIL
ADAMS COUNTY COORDINATES, NAD 83 (2007)

N. 240090.439

E. 538826.782

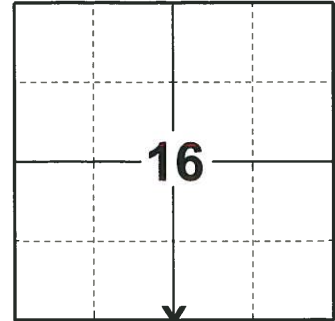
ELEVATION- _____ DATUM _____

FIELD WORK DATE: 06/10/2019

BASIS FOR MONUMENT LOCATION

2014 - PLS 2643 RECALLS THE MOST RECENT TIE SHEET OF RECORD WAS CERTIFIED BY G. RHINEHART ON SEPTEMBER 12, 2013. ON THAT TIE SHEET A HARRISON MONUMENT IS IDENTIFIED AS THE CORNER. PRIOR TO THE CONSTRUCTION ON HIGHWAY 21 THE HARRISON MONUMENT WAS NOT RECOVERED. THE CORNER POSITION WAS RE-ESTABLISHED BY USING THE EXISTING WITNESS TIES ON THE NORTH SIDE OF HIGHWAY 21. AFTER THE COMPLETION OF THE HIGHWAY 21 CONSTRUCTION A SNM 1 BERTSEN MARKING NAIL WAS SET AT THE CORNER POSITION AND 4 NEW WITNESS MONUMENTS WERE SET TO REFERENCE THE CORNER POSITION.

2019 - PLS 2675 FOUND SURVEY NAIL IN THE ROAD SURFACE AND 4 TIES, REMOVED THE SURVEY NAIL AND FOUND NO OTHER EVIDENCE OF ANY MONUMENT BELOW. THE SURVEY NAIL LOCATION AGREES WITH ALL 4 TIES. ACCEPTED THE SURVEY NAIL LOCATION AS THE CORNER LOCATION. RESET SURVEY NAIL AND MEASURED TO THE EXISTING TIES.



LOCATION

(INDICATE CORNER BY "X")

SEAL:



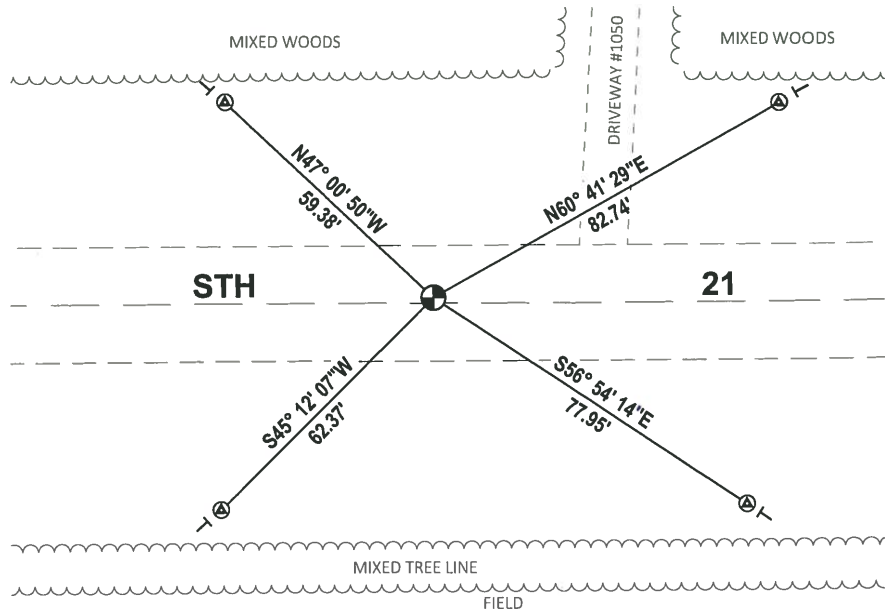
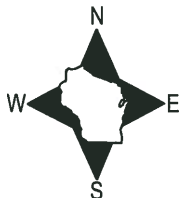
DATA SHOWN HERE ON THIS TIE SHEET IS CORRECT AND COMPLETE TO THE BEST OF MY KNOWLEDGE AND BELIEF.

PROFESSIONAL LAND SURVEYOR

DATE 8/2/19

TIE SKETCH

NOTE: THE CORNER FALLS 1½ NORTH OF THE CENTERLINE OF STH 21.

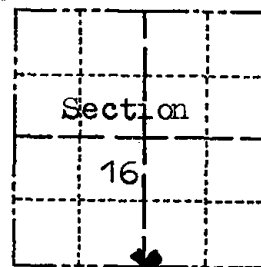


- ⊙ FOUND BERNTSEN SDDR103 W/BRONZE CAP
- ⊕ FOUND SURVEY NAIL MONUMENT
- ⊖ VINYL "T" POST

Government Land Corner Certificate

ADAMS County
 TYPE OF MONUMENT: PK Nail in Pavement
 STATE PLANE COORDINATES: N _____
 E _____
 ELEVATION — M.S.L. DATUM: _____
 THETA ANGLE: _____
 FIELD BOOK: 57 PAGE 34
 DRAWN BY: SCOTT SORENSEN

CORNER NO. 66
 SECTION 16
 TOWN 18
 RANGE 6



LOCATION
(Indicated by 'X')

BASIS FOR MONUMENT LOCATION

Show info such as: History of corner, with reference to Vol. and pg., dates, surveyor; exact description of monument replaced; if location computed, by taped or EDM traverse; landowner remarks, etc. (Use reverse side if necessary)

Ran EDM/T2 traverse around Section 16 and parts of adjoining sections to determine search area for investigation.

Search area falls in pavement of S.T.H. '21', no excavation was made. Could find no evidence of accessory monuments, or resurveys.

Relocated corner by single proportionate measure between adjacent corners.
 on line

Set Harrison monument on 10-17-77.

SEAL:



DATA SHOWN HERE ON
 CERTIFIED CORRECT

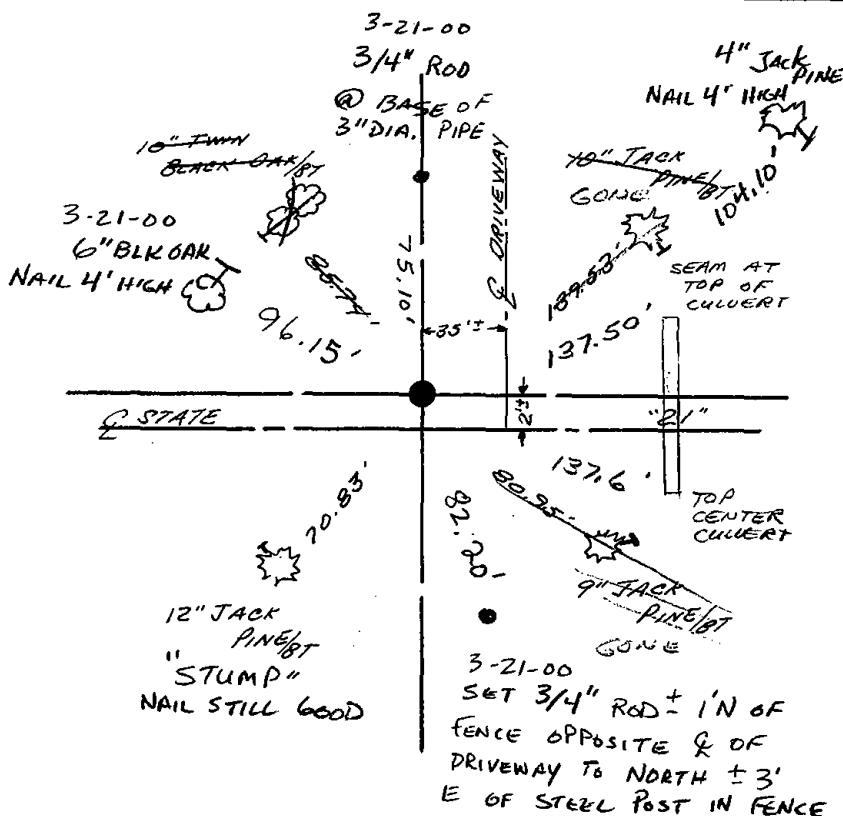
Dale C. Hagen
 Registered Land Surveyor
 DATE: 12-6-1977

TIE SKETCH

Show at least four ties, also fence lines, roads, topo, size and type of witness trees' and if off road - best way to arrive at corner.

NOTE

Ties in trees to nail in disc.



MAINTENANCE RECORD

Date	Init.	Remarks
11-30-78	RU-DA	OK
3-4-83	SS	OK
2-2-88	GR-SS	2 TIES GONE - 2 NEW
7-30-92	JG-BS	O.K.
2-11-98	JG	OK
1-22-03	JG	1-GONE, 4-NEW
12-20-07	JG-SS	OK