

PUBLIC LAND SURVEY MONUMENT RECORD

TYPE OF MONUMENT: SURVEY NAIL
ADAMS COUNTY COORDINATES, NAD 83 (2007)

N. 240229.814

E. 554582.232

ELEVATION- _____ DATUM _____

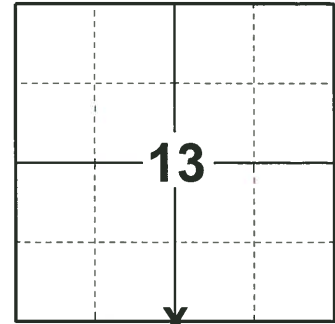
FIELD WORK DATE: 06/05/2019

BASIS FOR MONUMENT LOCATION

1979 - PLS 1478 FOUND HARRISON MONUMENT.

2014 - PLS 2643 PRIOR TO THE ROAD CONSTRUCTION ON HIGHWAY 21 THE CORNER WAS NOT RECOVERED AND THE TIES WERE GONE OR OVERGROWN. RESEARCHED THROUGH THE ADAMS COUNTY SURVEY RECORDS AND FOUND CSM 3852. RETRACED THE CORNER POSITION OF THE CSM AND THEN CALCULATED THE POSITION OF THE CORNER. AFTER THE COMPLETION OF THE ROAD CONSTRUCTION A SNM 1 BERNTSEN MARKING NAIL WAS SET AND 4 NEW WITNESS MONUMENTS WERE SET TO REFERENCE THE CORNER POSITION.

2019 - PLS 2675 FOUND SURVEY NAIL IN THE ROAD SURFACE, REMOVED AND DID NOT FIND ANY EVIDENCE OF ANY ADDITIONAL MONUMENTS BELOW AND 4 TIES. THE SURVEY NAIL LOCATION AGREES WITH THE EXISTING TIES. ACCEPTED THE SURVEY NAIL AS LOCATION AS THE CORNER LOCATION. RESET A SURVEY NAIL IN THE CORNER LOCATION AND MEASURED TO THE EXISTING TIES.



LOCATION

(INDICATE CORNER BY "X")

SEAL:



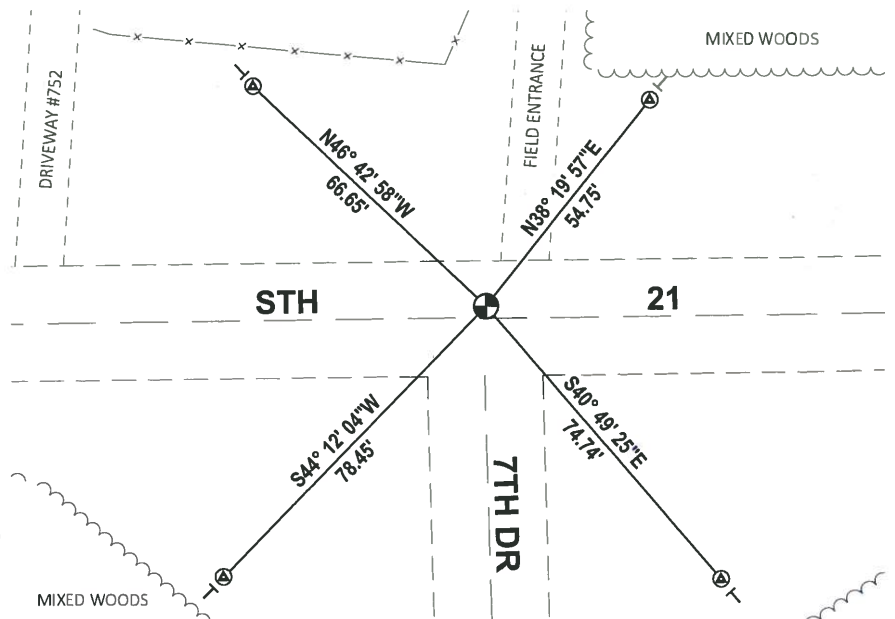
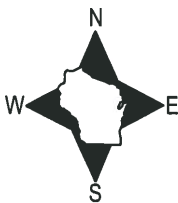
DATA SHOWN HERE ON THIS TIE SHEET IS CORRECT AND COMPLETE TO THE BEST OF MY KNOWLEDGE AND BELIEF.

PROFESSIONAL LAND SURVEYOR

DATE 8/2/19

- TIE SKETCH

NOTE: THE CORNER FALLS 2.5'± NORTH OF THE CENTERLINE OF STH 21.



- ⊕ FOUND BERNTSEN SDR103 W/BRONZE CAP
- ⊕ FOUND SURVEY NAIL MONUMENT
- VINYL "T" POST

Government Land Corner Certificate

ADAMS

County _____

TYPE OF MONUMENT: HARRISON TEMP PK SET

STATE PLANE COORDINATES: N _____
E _____

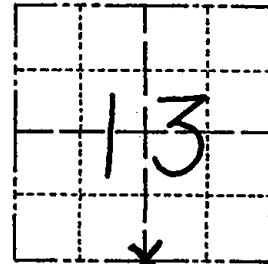
ELEVATION — M.S.L. DATUM: _____

THETA ANGLE: _____

FIELD BOOK: 54 PAGE 58

DRAWN BY: B. SULLIVAN

CORNER NO. 72
SECTION 13
TOWN 18
RANGE 6



LOCATION
(Indicated by 'X')

BASIS FOR MONUMENT LOCATION

Show info such as: History of corner, with reference to Vol. and pg., dates, surveyor; exact description of monument replaced; if location computed, by taped or EDM traverse; landowner remarks, etc. (Use reverse side if necessary)

The location of this corner was determined to be on a straight line between adjacent section corners at the intersection of the centerline of 7th Drive, by comparisons to distances recorded by M.C. Smith (ACSR Vol.2 pg. 24) and the D.o.t. (F.B 4151 and STH "21" plans from 1939). Excavation was not attempted in "21". I was unable to find any evidence of the B.T. marked by Smith.

SEAL:



DATA SHOWN HERE ON
CERTIFIED CORRECT:

Gregory P Rhinehart
Registered Land Surveyor

DATE: 7/10/79

TIE SKETCH

Show at least four ties, also fence lines, roads, topo, size (DEAD) and type of witness trees' and if off road - best way to arrive at corner.

