

13  
SECTION

18  
TOWN

06  
RANGE

# ADAMS COUNTY

COUNTY CORNER NO: 73  
ROMPORTOL ID: 41806130000

## PUBLIC LAND SURVEY MONUMENT RECORD

TYPE OF MONUMENT: SURVEY NAIL  
ADAMS COUNTY COORDINATES, NAD 83 (2007)

N. 240268.163

E. 557229.938

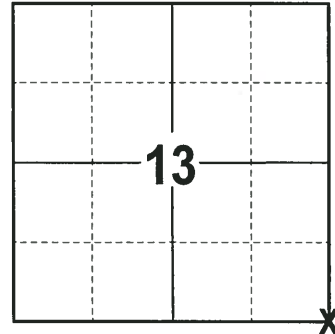
ELEVATION-      DATUM     

FIELD WORK DATE: 01/10/2018

### BASIS FOR MONUMENT LOCATION

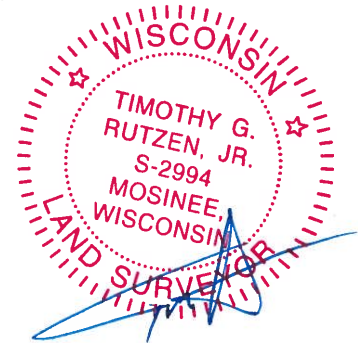
2014 - PLS 2643 NOTED THAT THE MOST RECENT TIE SHEET OF RECORD WAS FILED BY GREGORY RHINEHART ON SEPTEMBER 12, 2013. AT THAT TIME A P.K. NAIL WAS SET AT THE CORNER LOCATION. AFTER LOOKING AT THE TIE SHEET IT LOOKS LIKE MAINTENANCE WAS DONE ON THE CORNER ON MARCH 23, 2000 AND A P.K. NAIL WAS SET AT THE CORNER. PRIOR TO THE HIGHWAY 21 CONSTRUCTION THE P.K. NAIL WAS NOT RECOVERED AND THE TIES WERE GONE OR GROWN OVER. THE CORNER POSITION WAS CALCULATED BY USING THE FOUND CORNERS ON C.S.M. #3852. AFTER THE HIGHWAY CONSTRUCTION WAS COMPLETE A BERNTSEN SNM 1 MARKING NAIL WAS SET AT THE CORNER AND 4 NEW WITNESS MONUMENTS WERE SET TO REFERENCE THE CORNER LOCATION.

2017 - PLS 2994 FOUND A SURVEY NAIL IN THE ROAD SURFACE AND 4 TIES. REMOVED THE SURVEY NAIL AND FOUND NO EVIDENCE OF ANY OTHER MONUMENTS BELOW IT. THE SURVEY NAIL AGREES WITH THE EXISTING TIES. ACCEPTED THE SURVEY NAIL AS THE CORNER LOCATION AND RE-MEASURE TO THE EXISTING TIES.



LOCATION  
(INDICATE CORNER BY "X")

SEAL:



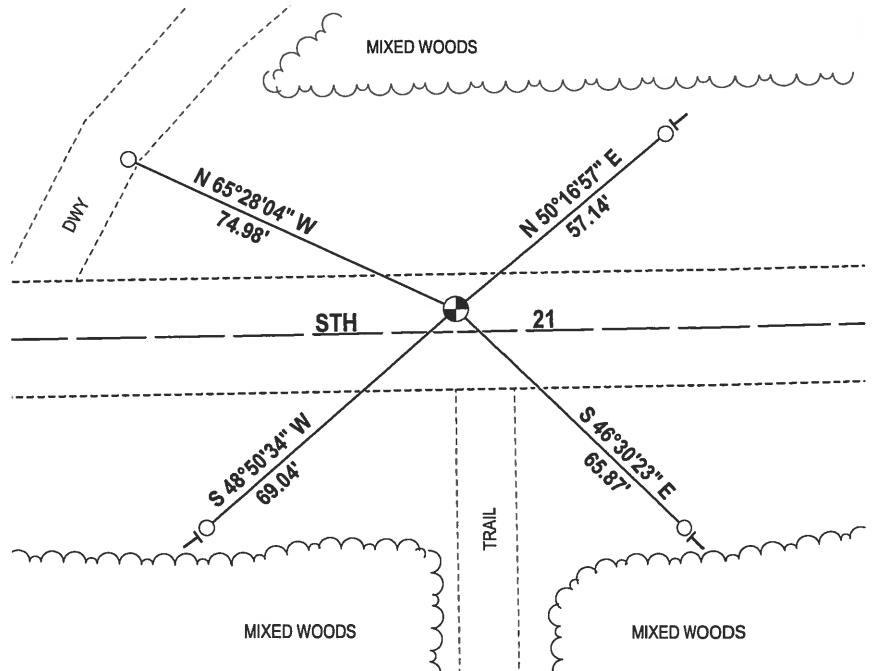
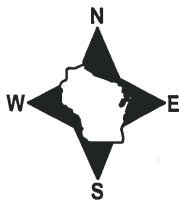
DATA SHOWN HERE ON THIS TIE SHEET IS CORRECT AND COMPLETE TO THE BEST OF MY KNOWLEDGE AND BELIEF.

PROFESSIONAL LAND SURVEYOR

DATE 2-2-18

### - TIE SKETCH

NOTE: THE CORNER FALLS 5± NORTH OF THE CENTERLINE OF STH 21.



- BERNTSEN MONUMENT FOUND
- ⊕ SURVEY NAIL FOUND
- VINYL "T" POST

# ADAMS COUNTY U.S. PUBLIC LAND SURVEY MONUMENT LOCATION RECORD

SECTION 13  
TOWNSHIP 18 N  
RANGE 6 E

**73**  
NO.

LANDMARK       BENCHMARK

FOUND   
SET   
RESET   
RE-TIED

CORNER IDENTITY: SE CORNER SEC. 13 (BERNTSEN SNM1 NAIL)

PRESTON  
CITY, VILLAGE, TOWN

MARATHON COUNTY COORDINATE: N: 240268.092

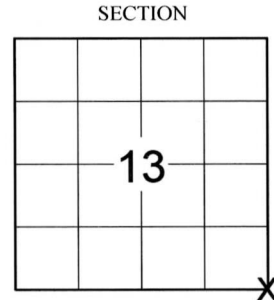
E: 557229.925

ELEVATION-(FEET): \_\_\_\_\_ DATUM: \_\_\_\_\_

WEATHER: SUNNY

DATE OF SURVEY: 7/14/2014 TEMPERATURE: 70 °F

SURVEY PARTY: KYLE R. FISCHER



LOCATION  
(Indicated By X)

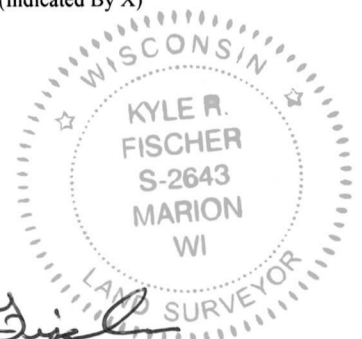


## BASIS FOR MONUMENT LOCATION:

(DESCRIBE METHOD OF SURVEY AND CORNER AUTHENTICATION)

The most recent tie sheet of record was filed by Gregory Rhinehart on September 12, 2013. At that time a P.K. nail was set at the corner position. After looking at the tie sheet it looks like maintenance was done on the corner on March 23, 2000 and a P.K. nail was set at the corner.

Prior to the Highway 21 construction the P.K. nail was not recovered and the ties were gone or over grown. The corner position was calculated by using the found corners on C.S.M. #3852. After the Highway construction was complete a Berntsen SNM 1 marking nail was set at the corner and four new witness monuments were set to reference the corners location.



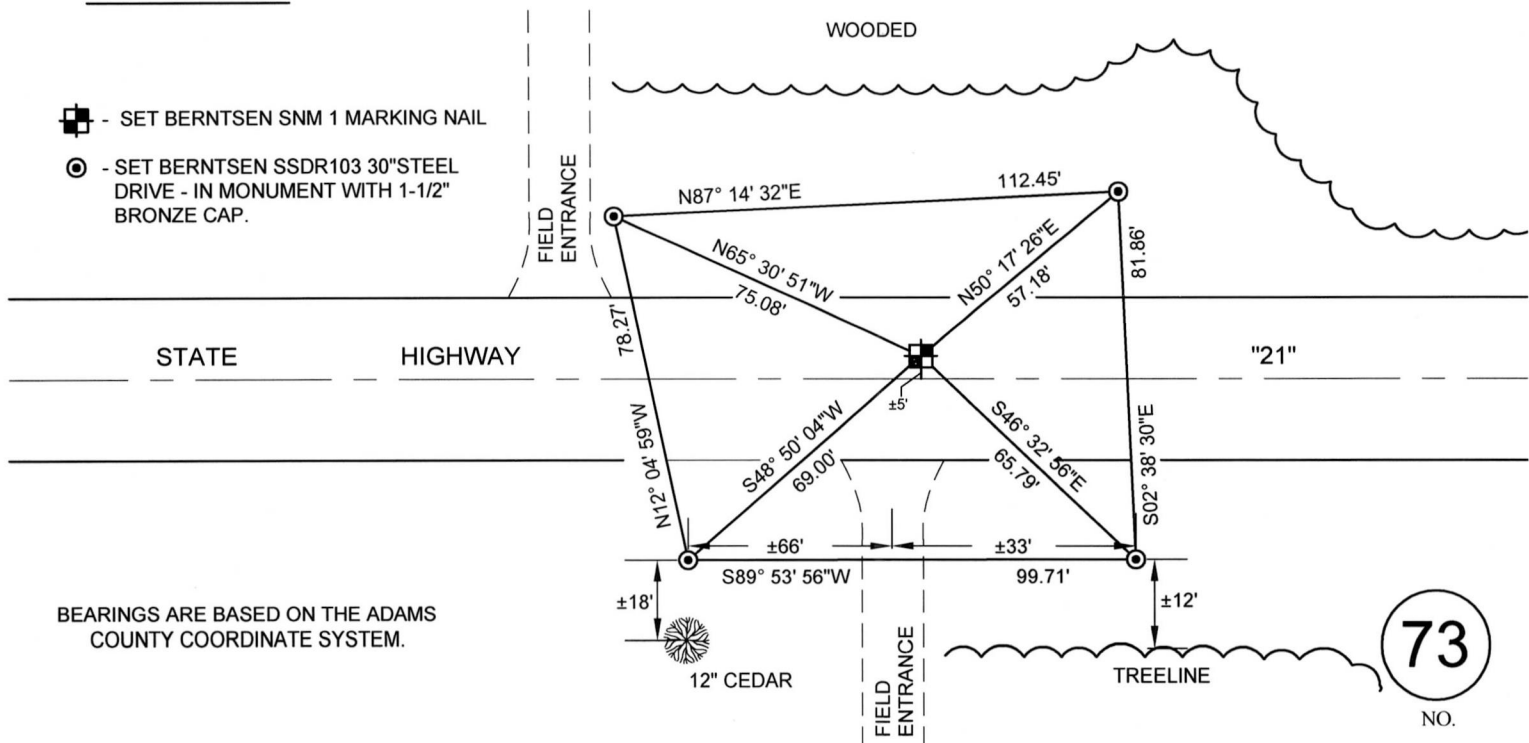
*Kyle R. Fischer*  
KYLE R. FISCHER, S-2643  
Registered Land Surveyor  
DATE: Aug 17, 2014

FIELD BOOK NO. S-11 PAGE NO. 70

COMPANY RIVERSIDE LAND SURVEYING LLC

## TIE SKETCH:

- SET BERNTSEN SNM 1 MARKING NAIL
- SET BERNTSEN SSSDR103 30" STEEL DRIVE - IN MONUMENT WITH 1-1/2" BRONZE CAP.



BEARINGS ARE BASED ON THE ADAMS COUNTY COORDINATE SYSTEM.

**73**  
NO.

- THIS DRAWING IS NOT TO SCALE