

24 SECTION 18 TOWN 06 RANGE

ADAMS COUNTY

COUNTY CORNER NO: 80
ROMPORTOL ID: 41806242000

PUBLIC LAND SURVEY MONUMENT RECORD

TYPE OF MONUMENT: HARRISON
ADAMS COUNTY COORDINATES, NAD 83 (2007)

N. 237611.472

E. 557277.814

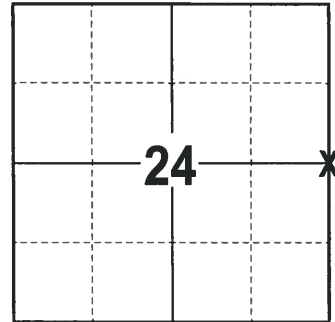
ELEVATION- DATUM

FIELD WORK DATE: 01/11/2018

BASIS FOR MONUMENT LOCATION

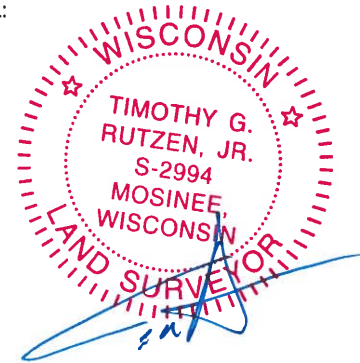
1981 - PLS 1167 SEARCHED AREA FOR EVIDENCE OF THE ORIGINAL CORNER OR FOR ANY REMONUMENTATION. SEARCH FAILED TO FURNISH ANY EVIDENCE. RAN EDM TRAVERSE AND SET THE E1/4 CORNER MIDWAY ON A STRAIGHT LINE BETWEEN ADJACENT SECTION CORNERS AND TIED OUT.

2017 - PLS 2994 FOUND A HARRISON MONUMENT FLUSH WITH THE GROUND SURFACE AND 1 TIE. THE MONUMENT AGREES WITH THE EXISTING TIE. ACCEPTED THE HARRISON MONUMENT AS THE CORNER LOCATION. SET 3 NEW TIES AND MEASURED TO THE TIES.



LOCATION
(INDICATE CORNER BY "X")

SEAL:



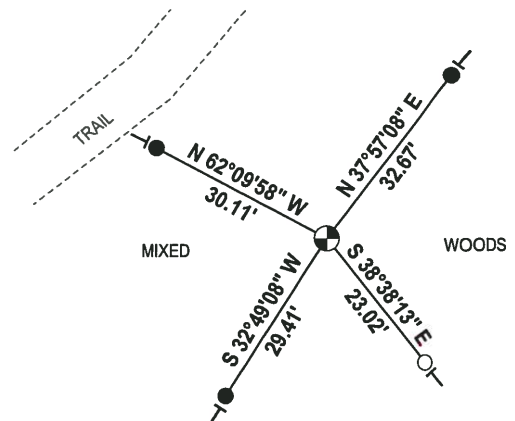
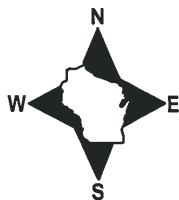
DATA SHOWN HERE ON THIS TIE SHEET IS CORRECT AND COMPLETE TO THE BEST OF MY KNOWLEDGE AND BELIEF.

PROFESSIONAL LAND SURVEYOR

DATE 2-2-18

- TIE SKETCH

NOTE: THE CORNER FALLS 50± SOUTH-EAST OF THE CENTERLINE OF THE TRAIL.

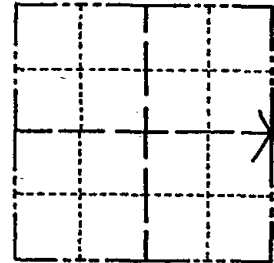


- 3/4" x 18" IRON REBAR SET, 1.50#/FT
- 1-1/4" O.D. IRON PIPE FOUND
- ⊙ HARRISON FOUND
- └ VINYL "T" POST

Government Land Corner Certificate

Adams County
 TYPE OF MONUMENT: HARRISON
 STATE PLANE COORDINATES: N _____
 E _____
 ELEVATION — M.S.L. DATUM: _____
 THETA ANGLE: _____
 FIELD BOOK: 66 PAGE _____
 DRAWN BY: Nuber

CORNER NO. 80
 SECTION 24
 TOWN 18
 RANGE 6E



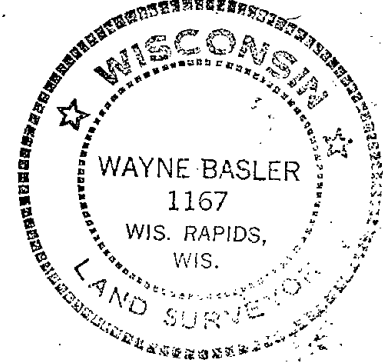
LOCATION
(Indicated by 'X')

BASIS FOR MONUMENT LOCATION

Show info such as: History of corner, with reference to Vol. and pg., dates, surveyor; exact description of monument replaced; if location computed, by taped or EDM traverse; landowner remarks, etc. (Use reverse side if necessary)

Searched area for evidence of original corner or for any remonumentation thereof. Search failed to furnish said evidence. E¹/₄ Cor. was set midway on a straight line between adjacent section corners. Ran EDM Traverse.

SEAL:



DATA SHOWN HERE ON
CERTIFIED CORRECT:

Wayne Basler
Registered Land Surveyor

DATE: 6-15-81

TIE SKETCH

Show at least four ties, also fence lines, roads, topo, size and type of witness trees' and if off road - best way to arrive at corner.

