

30  
SECTION

18  
TOWN

06  
RANGE

# ADAMS COUNTY

COUNTY CORNER NO: 95

ROMPORTOL ID: 41806302000

## PUBLIC LAND SURVEY MONUMENT RECORD

TYPE OF MONUMENT: HARRISON  
ADAMS COUNTY COORDINATES, NAD 83 (2007)

N. 232087.063

E. 530986.646

ELEVATION-      DATUM     

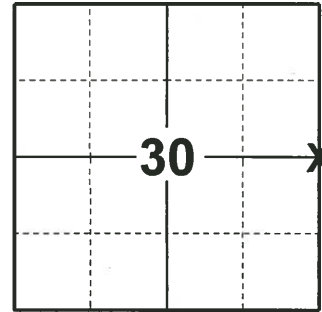
FIELD WORK DATE: 12/18/2019

### BASIS FOR MONUMENT LOCATION

1974 - PLS 1103 SET HARRISON MONUMENT EQUIDISTANT AND ON LINE BETWEEN ADJACENT SECTION CORNERS. AN EXTENSIVE INVESTIGATION IN THE SEARCH AREA REVEALED NO CONCLUSIVE EVIDENCE AS TO THE LOCATION OF THE ORIGINAL CORNER, ALTHOUGH A BEARING TIE FROM THE ORIGINAL NOTES IN ADAMS COUNTY WAS USED TO DETERMINE THE SEARCH AREA, THIS TIE WAS TO THE NORTH END OF ROCHE-A-CRI MOUND. THIS CORNER FALLS IN ROCHE-A-CRI STATE PARK ON THE EAST SIDE OF THE ROCHE-A-CRI MOUND.

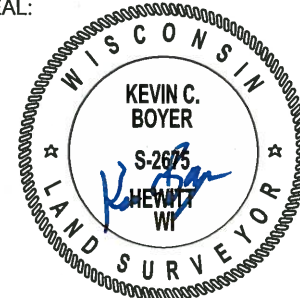
2013 - PLS 1478 REDREW TIE SHEET.

2019 - PLS FOUND HARRISON 3" ABOVE THE GROUND AND 2 WITNESS TREES. THE MONUMENT AGREES WITH ONE OF TWO WITNESS TREES. ACCEPTED THE HARRISON AS THE CORNER LOCATION. SET 4 NEW TIRES AND MEASURED TO THE WITNESS TREES.



LOCATION  
(INDICATE CORNER BY "X")

SEAL:



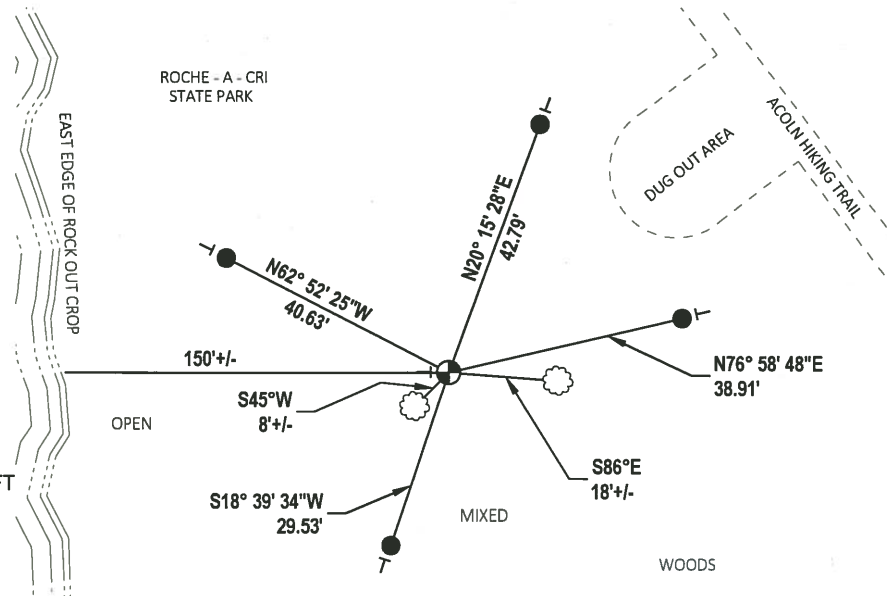
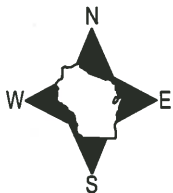
DATA SHOWN HERE ON THIS TIE SHEET IS CORRECT AND COMPLETE TO THE BEST OF MY KNOWLEDGE AND BELIEF.

PROFESSIONAL LAND SURVEYOR

DATE 1/9/2020

### TIE SKETCH

NOTE: THE CORNER LANDS 150'± EAST OF BOTTOM OF SLOPE OF A ROCK OUT CROP



- SET 3/4" x 18" IRON REBAR, 1.50#/FT
- ⊕ FOUND HARRISON MONUMENT
- VINYL "T" POST
- ⊗ WITNESS TREE

ADAMS COUNTY

Survey Monument Record

TYPE OF MONUMENT: 30° Harrison standard

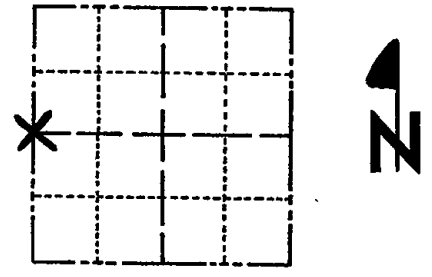
STATE PLANE COORDINATES: N \_\_\_\_\_  
E \_\_\_\_\_

ELEVATION — M.S.L. DATUM: \_\_\_\_\_

THETA ANGLE: \_\_\_\_\_

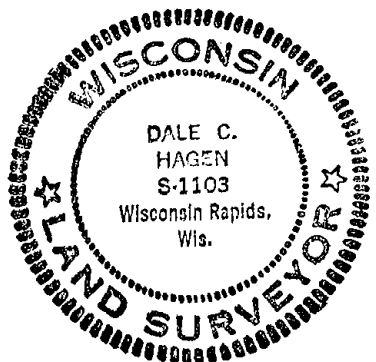
FIELD BOOK: \_\_\_\_\_ PAGE \_\_\_\_\_

CORNER NO. 561 <sup>(95)</sup>  
SECTION 29  
TOWN 18  
RANGE 6



LOCATION  
(Indicated by 'X')

SEAL:



BASIS FOR MONUMENT LOCATION

(Use reverse side if necessary)

Show info such as: History of corner, with reference to Vol. and pg, dates, surveyor; exact description of monument replaced; if location computed, by taped or EDM traverse; landowner remarks, etc.

Set equidistant and on line between adjacent section corners.

An extensive investigation in the search area revealed no conclusive evidence as to the location of the original corner, although a bearing tie from the original notes in Adams County was used to determine the search area, this tie was to the North end of Roche-A-Cri Mound.

This corner falls in Roche-A-Cri State Park on the East side of the Roche-A-Cri mound.

- OK GR-55 FALL 1978
- " 3-8-83 GR-55
- " 2-24-88 GR-55
- " 7-28-92 JG-85
- OK 12-16-02 JG
- OK 11-21-07 CS-55
- OK 4-23-98 JG-55

CERTIFIED CORRECT:

Dale C. Hagen  
Registered Land Surveyor

DATE: 10-28-74

TIE SKETCH

(Show at least four ties)

