

28
SECTION

18
TOWN

06
RANGE

ADAMS COUNTY

COUNTY CORNER NO: 97

ROMPORTOL ID: 41806282000

PUBLIC LAND SURVEY MONUMENT RECORD

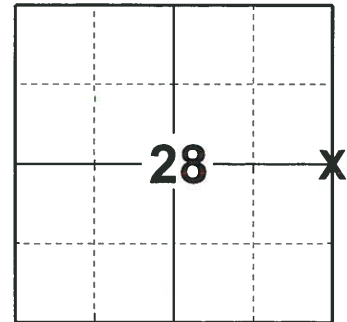
TYPE OF MONUMENT: HARRISON
ADAMS COUNTY COORDINATES, NAD 83 (2007)

N. 232226.951

E. 541546.860

ELEVATION- - - - DATUM - - - -

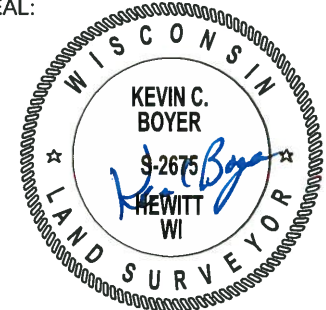
FIELD WORK DATE: 07/01/2019



LOCATION

(INDICATE CORNER BY "X")

SEAL:



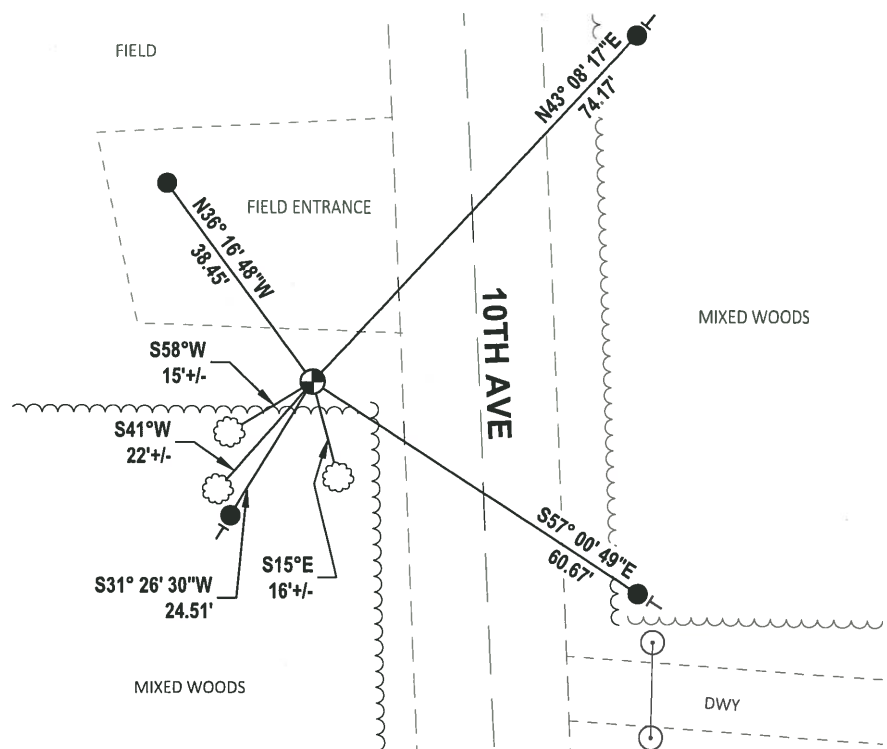
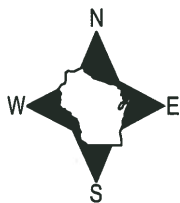
DATA SHOWN HERE ON THIS TIE SHEET IS CORRECT AND COMPLETE TO THE BEST OF MY KNOWLEDGE AND BELIEF.

PROFESSIONAL LAND SURVEYOR

DATE 8/2/19

TIE SKETCH

NOTE: THE CORNER FALLS 26'± WEST OF THE CENTERLINE OF 10TH AVE.

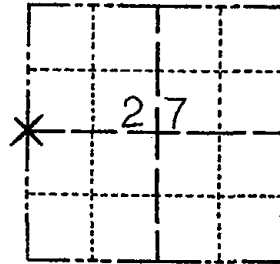


- SET 3/4" x 18" IRON REBAR, 1.50#/FT
- ⊕ FOUND HARRISON MONUMENT
- ⊥ VINYL "T" POST
- ☁ WITNESS TREE

Government Land Corner Certificate

ADAMS County
 TYPE OF MONUMENT: STANDARD HARRISON
 STATE PLANE COORDINATES: N _____
 E _____
 ELEVATION — M.S.L. DATUM: _____
 THETA ANGLE: _____
 FIELD BOOK: AF 40 PAGE 9
 DRAWN BY: KZ

CORNER NO. 97
 SECTION 27
 TOWN 18N
 RANGE 6E



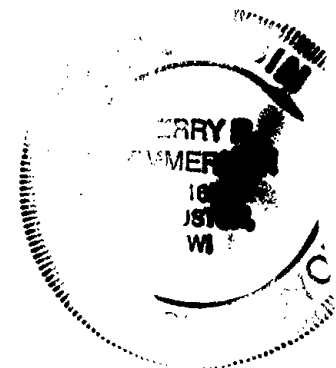
LOCATION
(Indicated by 'X')

BASIS FOR MONUMENT LOCATION

Show info such as: History of corner, with reference to Vol. and pg., dates, surveyor; exact description of monument replaced; if location computed, by taped or EDM traverse; landowner remarks, etc. (Use reverse side if necessary)

MONUMENT WAS BROKEN OFF BY
 FLOW. BOTTOM STILL INTACT.
 REPLACED WITH NEW HARRISON.
 MADE NEW BT.'S

SEAL:



DATA SHOWN HERE ON
 CERTIFIED CORRECT:

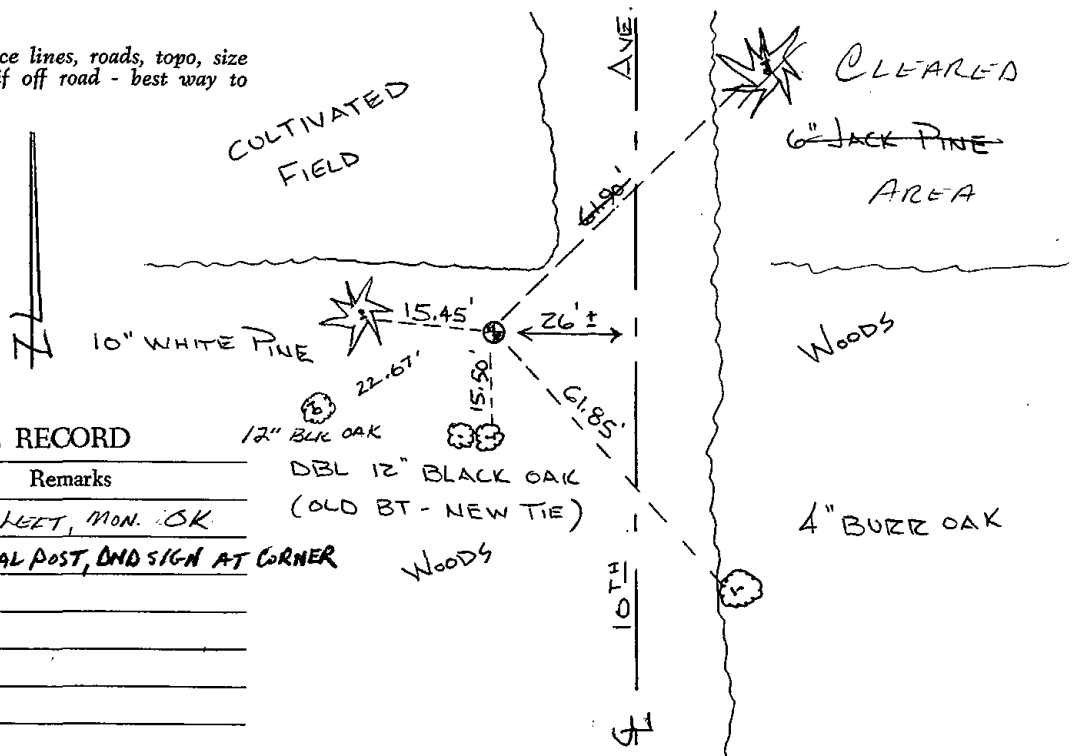
[Signature]
 Registered Land Surveyor

DATE: 16TH DECEMBER, 1992

TIE SKETCH

Show at least four ties, also fence lines, roads, topo, size and type of witness trees' and if off road - best way to arrive at corner.

ALL TREES BLAZED
 TIES TO ZOD SPIKES



MAINTENANCE RECORD

Date	Init.	Remarks
1-22-98	JG	4-TIES LEFT, MON. OK
12-13-02	JG	OK, METAL POST, DND SIGN AT CORNER
11-26-07	JG	OK

ADAMS COUNTY

Survey Monument Record

TYPE OF MONUMENT: 30" Harrison standard

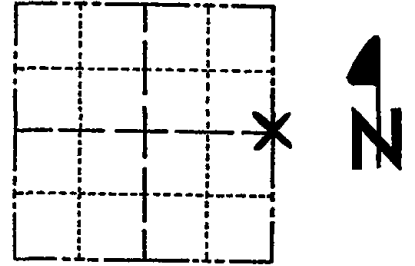
STATE PLANE COORDINATES: N _____
E _____

ELEVATION — M.S.L. DATUM: _____

THETA ANGLE: _____

FIELD BOOK: _____ PAGE _____

CORNER NO. 556
SECTION 28
TOWN 18
RANGE 6



BASIS FOR MONUMENT LOCATION

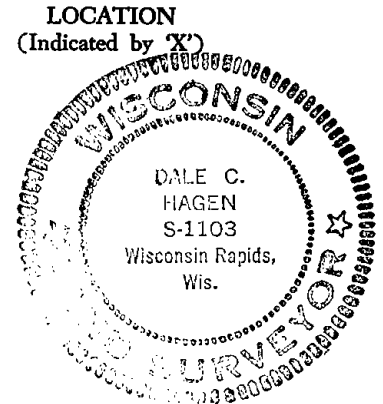
(Use reverse side if necessary)

Show info such as: History of corner, with reference to Vol. and pg. dates, surveyor; exact description of monument replaced; if location computed, by taped or EDM traverse; landowner remarks, etc.

Set equidistant and on line between adjacent section corners.

to the backhole

ABK dug and found nothing at the inter section of the fence and the road.



SEAL:

OK 7-18-78 PK-SS
1 TIE GONE 3-23-83 GR-SS
2-2-88 GR-SS OK

CERTIFIED CORRECT:

Dale C. Hagen
Registered Land Surveyor

DATE: 10-28-74

(SEE TIE SHEET DATED 12/16/92)

TIE SKETCH

(Show at least four ties)

