

27  
SECTION

18  
TOWN

06  
RANGE

# ADAMS COUNTY

COUNTY CORNER NO: 98

ROMPORTOL ID: 41806272000

## PUBLIC LAND SURVEY MONUMENT RECORD

TYPE OF MONUMENT: HARRISON (BROKEN-TOP)

ADAMS COUNTY COORDINATES, NAD 83 (2007)

N. 232226.672

E. 546827.566

ELEVATION- \_\_\_\_\_ DATUM \_\_\_\_\_

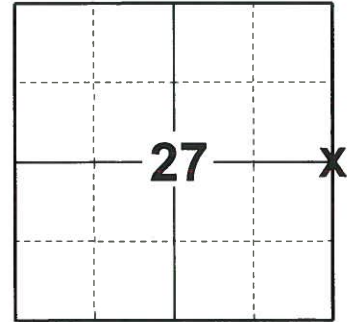
FIELD WORK DATE: 06/27/2019

### BASIS FOR MONUMENT LOCATION

1978 - PLS 878 REPLACED AN EXISTING 1" IRON PIPE WITH HARRISON MONUMENT. THIS PIPE WAS SET BY H. SIME IN SEPT. 1964 AND IS SHOWN ON CSM VOL 1, PAGE 13.

2013 - PLS 1478 REDREW TIE SHEET.

2019 - PLS 2675 FOUND A HARRISON MONUMENT WITH A BROKEN-TOP 4" BELOW THE ROAD SURFACE, 1 TIE, 1 PROPERTY IRON AND 2 WITNESSES. THE MONUMENT AGREES WITH THE EXISTING TIE AND WITNESSES. ACCEPTED THE HARRISON MONUMENT WITH A BROKEN-TOP AS THE CORNER LOCATION. SET 2 NEW TIES AND MEASURED TO THE TIES, PROPERTY IRON AND WITNESSES.



### LOCATION

(INDICATE CORNER BY "X")

SEAL:



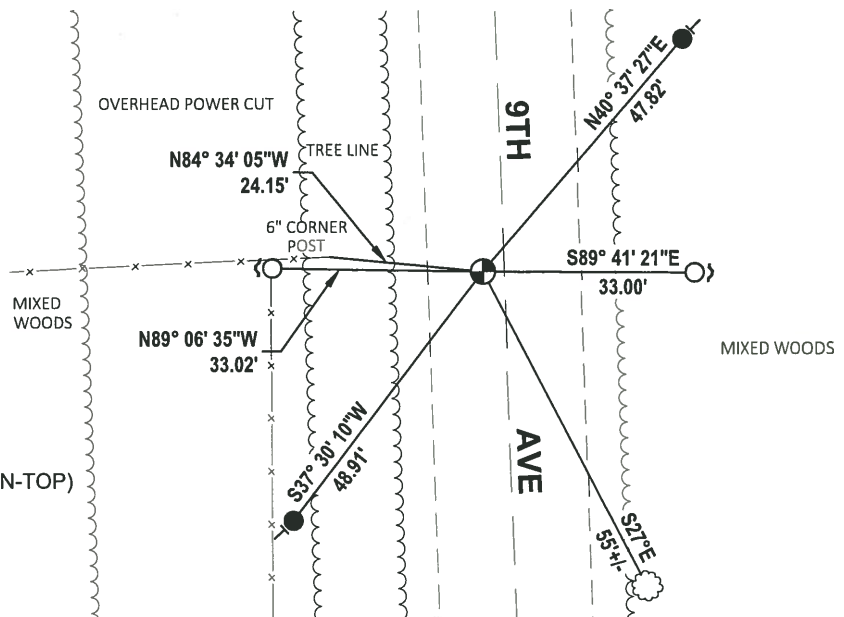
DATA SHOWN HERE ON THIS TIE SHEET IS CORRECT AND COMPLETE TO THE BEST OF MY KNOWLEDGE AND BELIEF.

PROFESSIONAL LAND SURVEYOR

DATE 8/2/19

### - TIE SKETCH

NOTE: THE CORNER FALLS 3 1/2 WEST OF THE CENTERLINE OF 9TH AVE.

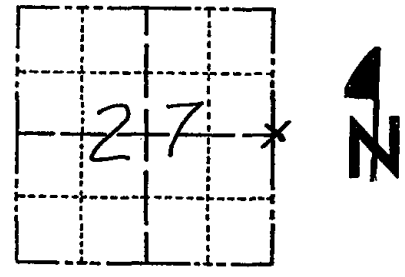


- SET 3/4" x 18" IRON REBAR, 1.50#/FT
- FOUND 3/4" IRON ROD
- ⊙ FOUND HARRISON MONUMENT (BROKEN-TOP)
- ┌ STEEL FENCE POST
- └ VINYL "T" POST
- ☁ WITNESS TREE

# Government Land Corner Certificate

ADAMS County  
 TYPE OF MONUMENT Harrison Monument  
 STATE PLANE COORDINATES: N \_\_\_\_\_  
 E \_\_\_\_\_  
 ELEVATION — M.S.L. DATUM: \_\_\_\_\_  
 THETA ANGLE: \_\_\_\_\_  
 FIELD BOOK: 66 PAGE 153  
 DRAWN BY: G. Rhinehart

CORNER NO. 98  
 SECTION 27  
 TOWN 18  
 RANGE 6



LOCATION  
 (Indicated by 'X')

## BASIS FOR MONUMENT LOCATION

Show info such as: History of corner, with reference to Vol. and pg., dates, surveyor; exact description of monument replaced; if location computed, by taped or EDM traverse; landowner remarks, etc. (Use reverse side if necessary)

Replaced an existing 1" iron Pipe with Harrison monument. This pipe was set by H. Sime in Sept. 1964 and is shown on C.S.M. Vol. 1. Pg. 13

SEAL:



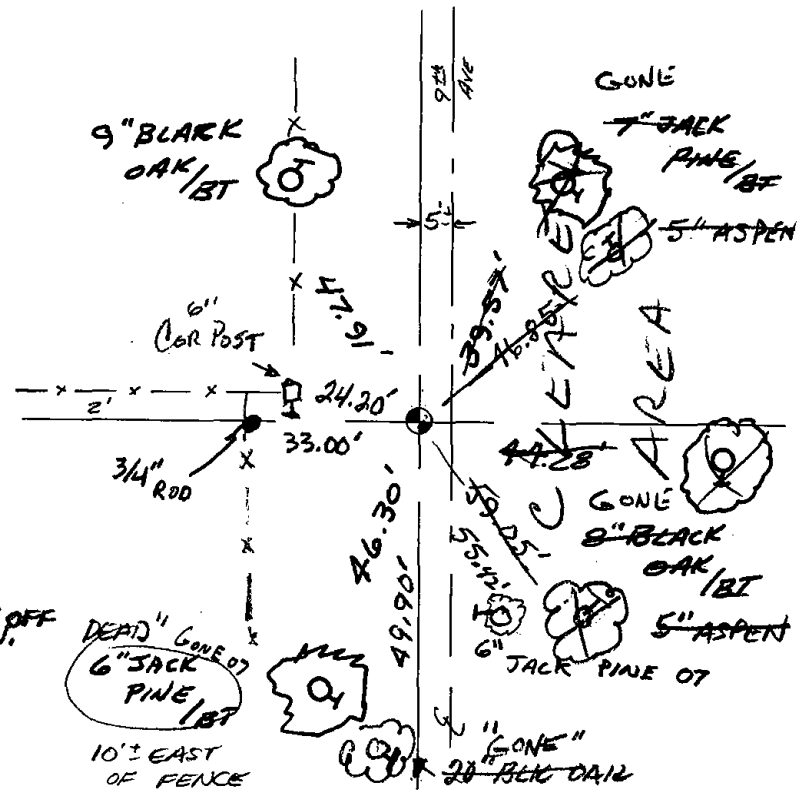
DATA SHOWN HERE ON  
 CERTIFIED CORRECT:

*Anthony B. Kiedrowski*  
 Registered Land Surveyor

DATE: 12/5/78

## TIE SKETCH

Show at least four ties, also fence lines, roads, topo, size and type of witness trees' and if off road - best way to arrive at corner.



## MAINTENANCE RECORD

Date	Init.	Remarks
3-2-83	SS	OK
2-12-88	GR-SS	"
7-29-92	JG-BS	2-GONE, 2-NEW, MON. OK
1-22-98	JG	2-GONE, 2-NEW, TOP BROKEN OFF MON.
12-13-02	JG	1-GONE, 1-NEW
11-21-07	CS	1-GONE, 1-NEW