

## PUBLIC LAND SURVEY MONUMENT RECORD

TYPE OF MONUMENT: BERNTSEN SNM1 SURVEY NAIL  
ADAMS COUNTY COORDINATES, NAD 83 (2007)

N. 232272.510

E. 552048.899

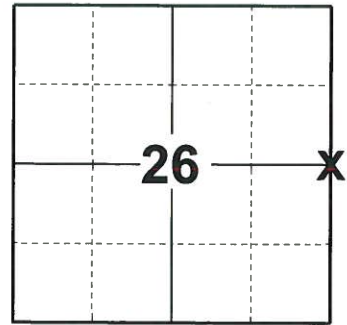
ELEVATION- - - - - DATUM - - - - -

FIELD WORK DATE: 06/27/2019

### BASIS FOR MONUMENT LOCATION

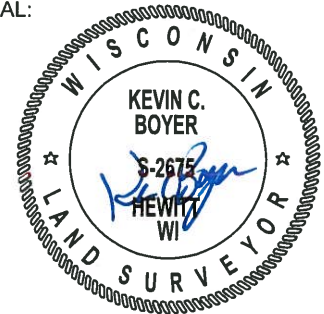
2013 - PLS 1199 CORNER LOST DUE TO CONSTRUCTION. CORNER RE-SET USING CSM #1976 AND CSM #2320 AND THE SECTION SUMMARY ON FILE FROM THE COUNTY SURVEYOR'S OFFICE.

2019 - PLS 2675 FOUND A 6" NAIL IN THE ROAD SURFACE, 1 TIE AND 2 WITNESSES. REMOVED THE NAIL AND FOUND NO OTHER EVIDENCE OF ANY ADDITIONAL MONUMENT BELOW. THE 6" NAIL LOCATION AGREES WITH THE EXISTING TIE AND WITNESSES. ACCEPTED THE 6" NAIL LOCATION AS THE CORNER LOCATION. SET A SURVEY NAIL IN THE 6" NAIL LOCATION. SET 4 NEW TIES AND MEASURED TO A FOUND WISDOT ALUM. CAP AND THE EXISTING TIE AND WITNESSES.



**LOCATION**  
(INDICATE CORNER BY "X")

SEAL:



DATA SHOWN HERE ON THIS TIE SHEET IS CORRECT AND COMPLETE TO THE BEST OF MY KNOWLEDGE AND BELIEF.

PROFESSIONAL LAND SURVEYOR

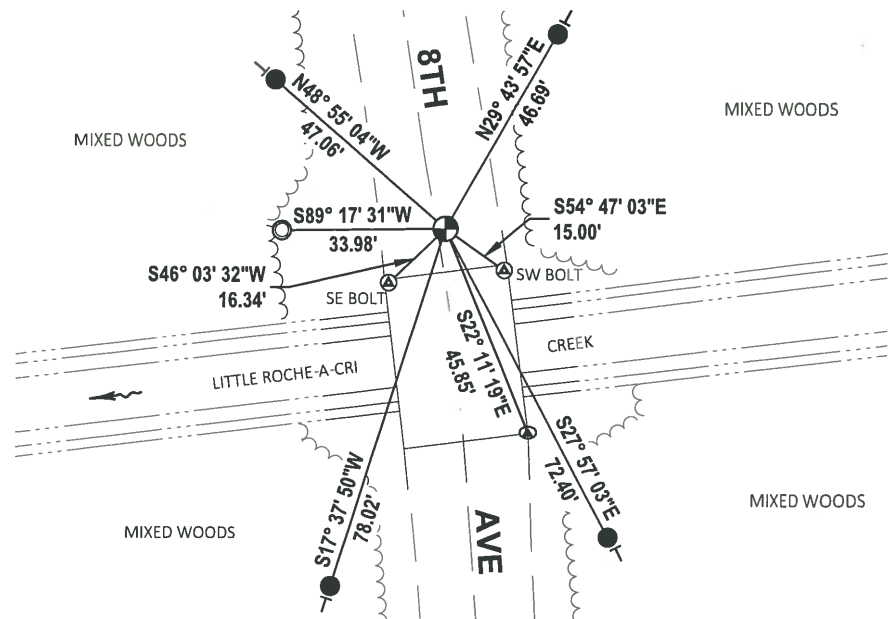
DATE 8/2/19

### - TIE SKETCH

NOTE: THE CORNER FALLS 2'± EAST OF THE CENTERLINE OF 8TH AVE.



- SET 3/4" x 18" IRON REBAR, 1.50#/FT
- FOUND 1-1/4" O.D. IRON PIPE
- ⊕ SET SURVEY NAIL
- ⊙ ALUM. CAP IN WINGWALL
- └ VINYL "T" POST



ADAMS COUNTY

Survey Monument Record

TYPE OF MONUMENT: Chiseled Grooves in Bridge Deck.

STATE PLANE COORDINATES: N \_\_\_\_\_  
E \_\_\_\_\_

ELEVATION — M.S.L. DATUM: \_\_\_\_\_

THETA ANGLE: \_\_\_\_\_

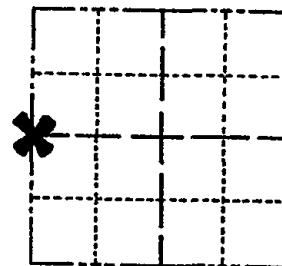
FIELD BOOK: \_\_\_\_\_ PAGE \_\_\_\_\_

CORNER NO. 942 99

SECTION 25

TOWN 18

RANGE 6



LOCATION  
(Indicated by 'X')

SEAL:

BASIS FOR MONUMENT LOCATION

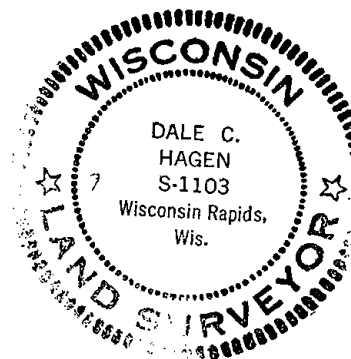
(Use reverse side if necessary)

Show info such as: History of corner, with reference to Vol. and pg. dates, surveyor; exact description of monument replaced; if location computed, by taped or EDM traverse; landowner remarks, etc.

Ran EDM/transit traverse around Section 25 and to the adjacent corners to determine search areas.

Did not excavate because corner search area fell within the bridge construction area.

Set corner by single proportional measure between adjacent section corners.



OK 9-12-78 RN-SS

3-2-83 - SS - 1 TIE GONE - NOTHING AVAILABLE

2-12-88 GR-SS OK

FO P.K. - ADD 2 NEW TIES 4-23-98 JG-SS

OK, 12-16-02-JG

OK 11-21-07 CS

CERTIFIED CORRECT:

*Dale C. Hagen*  
Registered Land Surveyor

DATE: January 17, 1976

TIE SKETCH

(Show at least four ties)

NOTE:

Ties in trees to nail in disc.

