

## PUBLIC LAND SURVEY MONUMENT RECORD

TYPE OF MONUMENT: SURVEY NAIL  
ADAMS COUNTY COORDINATES, NAD 83 (2007)

N. 229425.238

E. 528431.983

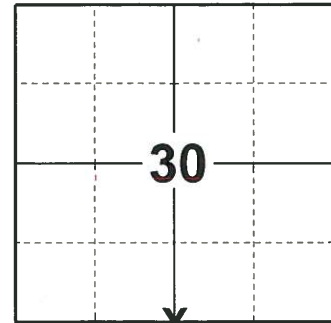
ELEVATION- - - - DATUM - - - -

FIELD WORK DATE: 07/02/2019

### BASIS FOR MONUMENT LOCATION

1974 - PLS 878 POINT ESTABLISHED BY RETRACEMENT OF RAINBOW TROUT SUBDIVISION BY S. MULLEN.

2019 - PLS 2675 FOUND A MAG NAIL IN THE ROAD SURFACE, 4 TIES AND A WISDOT BENCHMARK. REMOVED THE MAG NAIL AND FOUND NO EVIDENCE OF ANY ADDITIONAL MONUMENTS BELOW. THE MAG NAIL LOCATION AGREES WITH THE EXISTING TIES. ACCEPTED THE MAG NAIL LOCATION AS THE CORNER LOCATION. RE-SET A SURVEY NAIL IN THE MAG NAIL LOCATION. SET 4 NEW TIES AND MEASURED TO THE TIES AND WISDOT BENCHMARK.



**LOCATION**

(INDICATE CORNER BY "X")

SEAL:



DATA SHOWN HERE ON THIS TIE SHEET IS CORRECT AND COMPLETE TO THE BEST OF MY KNOWLEDGE AND BELIEF.

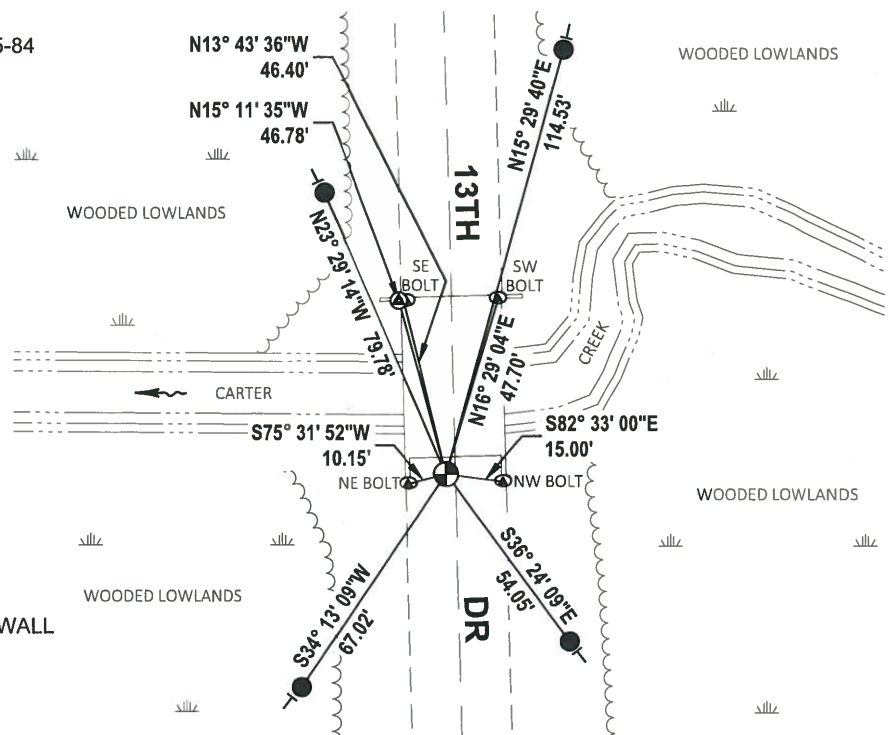
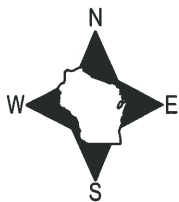
PROFESSIONAL LAND SURVEYOR

DATE 8/2/19

### TIE SKETCH

NOTES: THE STRUCTURE NUMBER IS B-1-5-84

THE CORNER FALLS 2± WEST OF THE CENTERLINE OF 13TH AVE.



- SET 3/4" x 18" IRON REBAR, 1.50#/FT
- ⊙ FOUND WISDOT BENCHMARK IN WINGWALL
- ⊕ RE-SET SURVEY NAIL
- VINYL "T" POST

ADAMS COUNTY

CORNER NO. 452

Survey Monument Record

SECTION 30

TYPE OF MONUMENT: Harrison Standard

TOWN 18

STATE PLANE COORDINATES: N \_\_\_\_\_

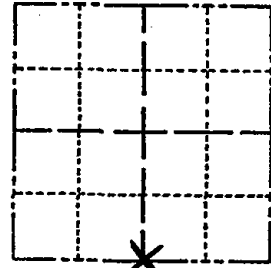
RANGE 6

E \_\_\_\_\_

ELEVATION — M.S.L. DATUM: \_\_\_\_\_

THETA ANGLE: \_\_\_\_\_

FIELD BOOK: \_\_\_\_\_ PAGE \_\_\_\_\_



LOCATION (Indicated by 'X')

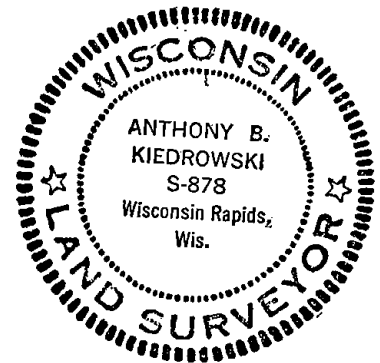
SEAL:

BASIS FOR MONUMENT LOCATION

(Use reverse side if necessary)

Show info such as: History of corner, with reference to Vol. and pg, dates, surveyor; exact description of monument replaced; if location computed, by taped or EDM traverse; landowner remarks, etc.

Point established by retracement of Rainbow Trout Subdivision by Sam Mullen.



OK 7-18-78 PK-SS

CERTIFIED CORRECT:

*Anthony B. Kiedrowski*

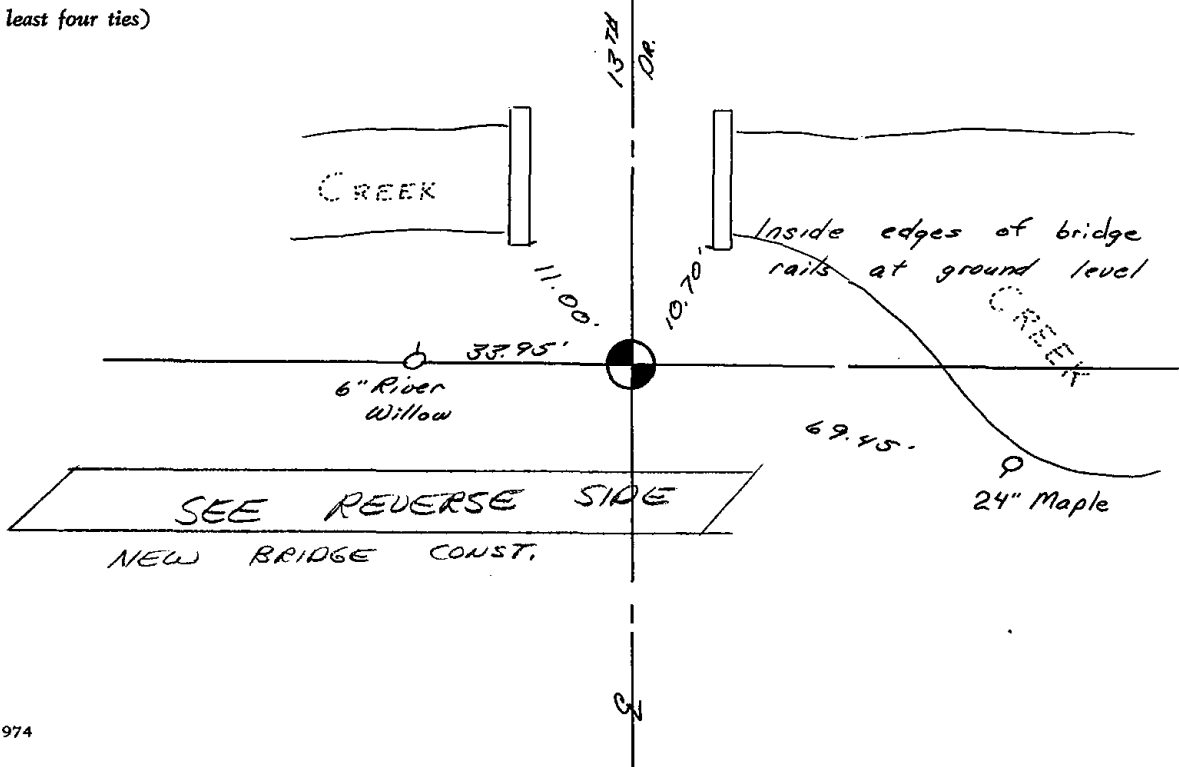
Registered Land Surveyor

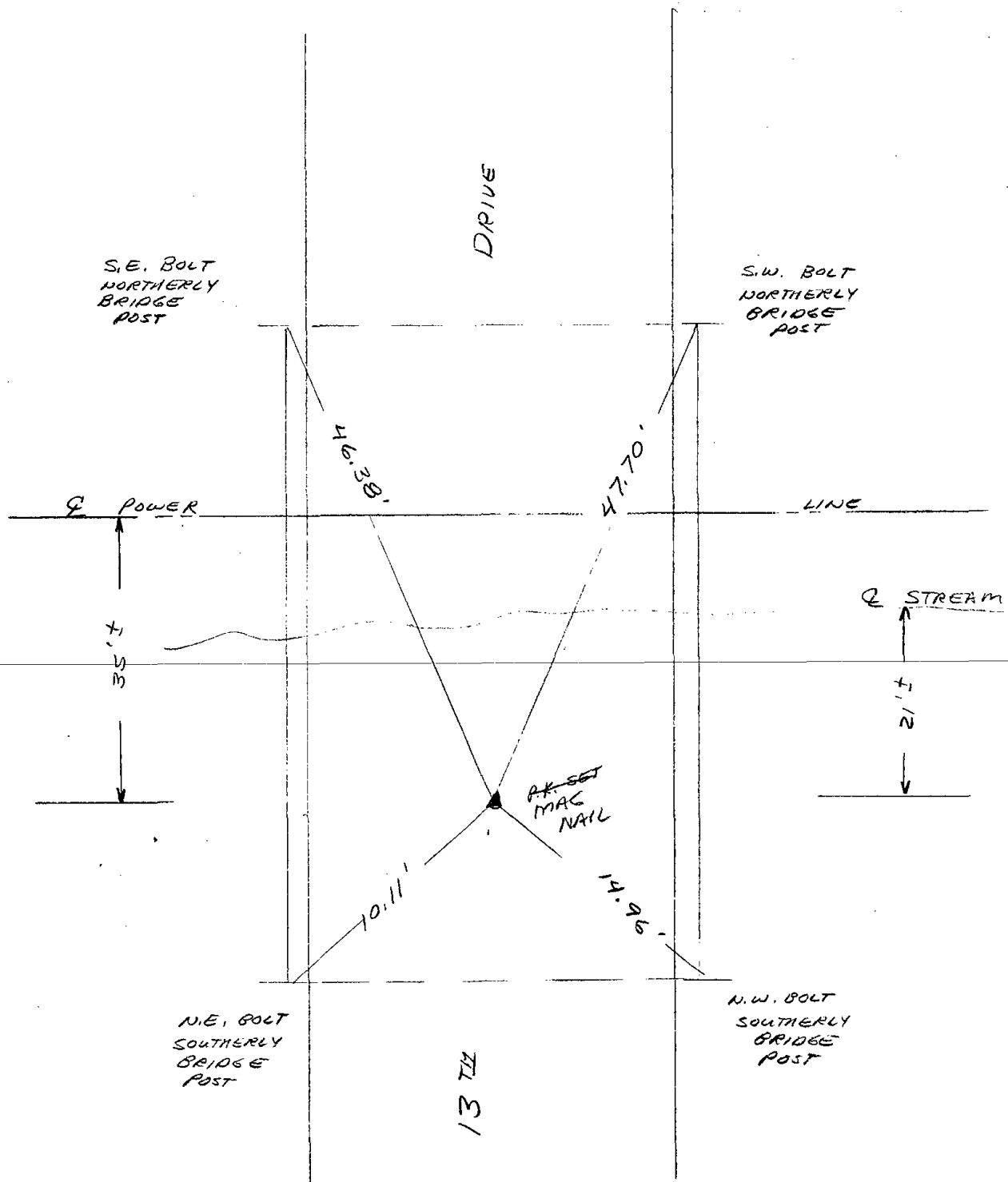
DATE: July 31, 1974

TIE SKETCH

(Show at least four ties)

All ties to nail and disc.





NEW TIES 2-2-88 GR-SS

OK 8-11-92 JG-BS

OK 11-22-98 - JG

OK -12-10-02 SS

OK -11-26-07 - JG