

## PUBLIC LAND SURVEY MONUMENT RECORD

TYPE OF MONUMENT: HARRISON  
 ADAMS COUNTY COORDINATES, NAD 83 (2007)

N. 226804.500

E. 531096.319

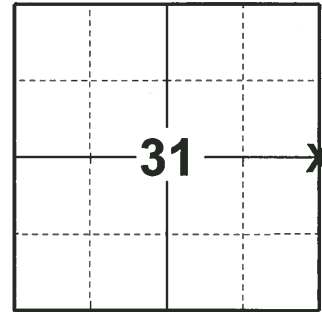
ELEVATION- - - - - DATUM - - - - -

FIELD WORK DATE: 12/18/2019

### BASIS FOR MONUMENT LOCATION

1974 - PLS 1103 REPLACED 2" IRON PIPE FOUND BY RETRACEMENT OF ENCHANTED VISTA SUBDIVISION SURVEYED BY R.K. SAYLER. SET HARRISON STANDARD WITH CHUNKS OF SAND STONE PILED AROUND TOP 6". THIS CORNER FALLS ON THE EAST SHOULDER OF FRIENDSHIP MOUND APPROXIMATELY 205' FROM THE TOP AND 55' NORTH OF A UTILITY LINE RUNNING TO THE FIRE TOWER ON THE MOUND.

2019 - PLS 2675 FOUND HARRISON 6" ABOVE THE GROUND AND 2 WITNESS TREES, AND 1 WITNESS STUMP. THE MONUMENT AGREES WITH ALL 3 WITNESSES TREES. ACCEPTED THE HARRISON AS THE CORNER LOCATION. SET 4 NEW TIES AND MEASURED TO THE EXISTING WITNESS TREES.



LOCATION  
 (INDICATE CORNER BY "X")

SEAL:

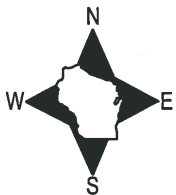


DATA SHOWN HERE ON THIS TIE SHEET IS CORRECT AND COMPLETE TO THE BEST OF MY KNOWLEDGE AND BELIEF.

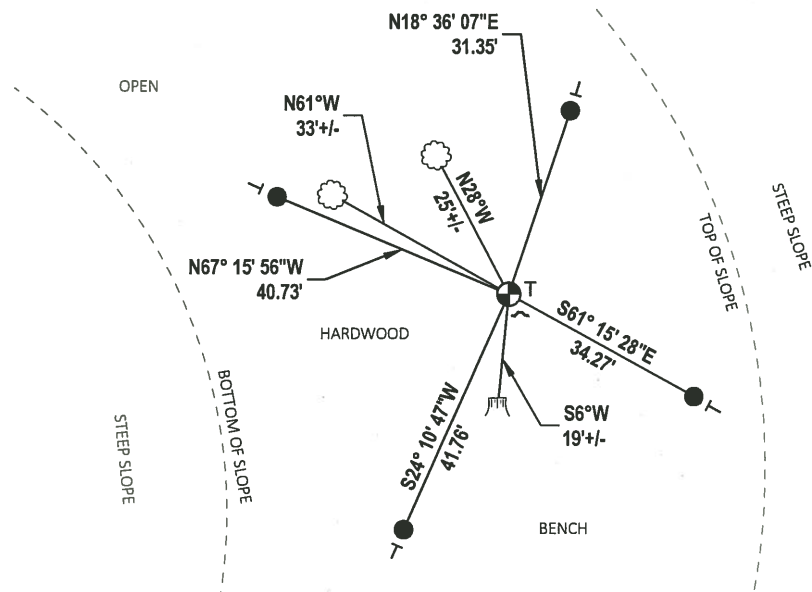
PROFESSIONAL LAND SURVEYOR

DATE 1/9/2020

### - TIE SKETCH



- SET 3/4" x 18" IRON REBAR, 1.50#/FT
- ⊕ FOUND HARRISON MONUMENT
- STEEL FENCE POST
- VINYL "T" POST
- ☁ WITNESS TREE
- ⌵ WITNESS STUMP



# ADAMS COUNTY

## Survey Monument Record

TYPE OF MONUMENT: 30" Harrison standard

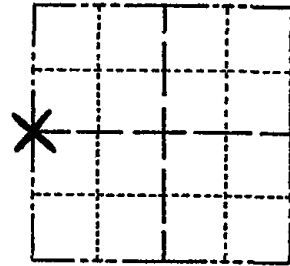
STATE PLANE COORDINATES: N \_\_\_\_\_  
E \_\_\_\_\_

ELEVATION — M.S.L. DATUM: \_\_\_\_\_

THETA ANGLE: \_\_\_\_\_

FIELD BOOK: \_\_\_\_\_ PAGE \_\_\_\_\_

CORNER NO. 562  
SECTION 32  
TOWN 18  
RANGE 6



LOCATION  
(Indicated by 'X')

SEAL:



### BASIS FOR MONUMENT LOCATION

(Use reverse side if necessary)

Show info such as: History of corner, with reference to Vol. and pg, dates, surveyor; exact description of monument replaced; if location computed, by taped or EDM traverse; landowner remarks, etc.

Replaced 2" Iron Pipe found by retracement of Enchanted Vista Subdivisoin surveyed by R. K. Saylor. Set Harrison Standard with chunks of sand stone piled around top 6".

This corner falls on the East shoulder of Friendship Mound approximately 250 feet from the top and 550 feet North of a utility line running to the fire tower on the mound.

OK 12-1-78 RU-DA  
3-8-83 GR-SS 1 NEW TIE  
1-GONE, 7-29-92 JG-B5  
OK 4-23-98 JG-SS  
1-GONE, 1-NEW, MON. OK 12-10-02 - JG

CERTIFIED CORRECT:

Dale C. Hagen  
Registered Land Surveyor

DATE: 10-28-74

### TIE SKETCH Nov 03 '55

(Show at least four ties)

