

## PUBLIC LAND SURVEY MONUMENT RECORD

TYPE OF MONUMENT: HARRISON (BROKEN TOP)  
 ADAMS COUNTY COORDINATES, NAD 83 (2007)

N. 224171.783

E. 536227.426

ELEVATION- \_\_\_\_\_ DATUM \_\_\_\_\_

FIELD WORK DATE: 06/07/2017

### BASIS FOR MONUMENT LOCATION

1973- PLS 878 FOUND 2" CAPPED BENT IRON PIPE. SET A 30" HARRISON MONUMENT AT CORNER AND TIED OUT.

2017 - PLS 2994 FOUND EXISTING HARRISON MONUMENT 18" BELOW THE SURFACE AND 1 WITNESS. THE MONUMENT AGREES WITH THE EXISTING WITNESS. ACCEPTED HARRISON AS CORNER LOCATION, SET 4 NEW TIES AND RE-MEASURED TO EXISTING WITNESS.



**LOCATION**  
 (INDICATE CORNER BY "X")

SEAL:



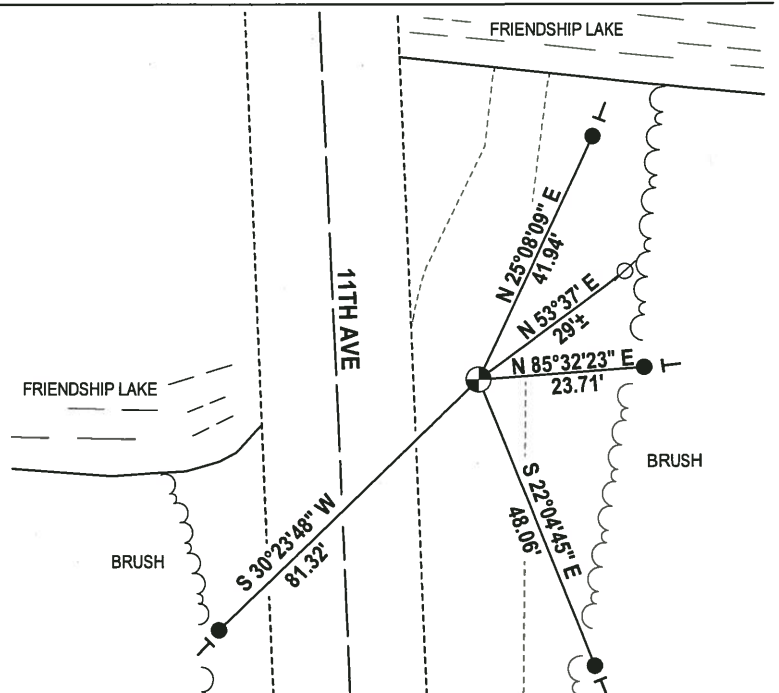
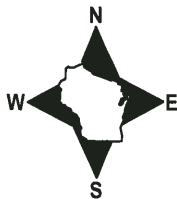
DATA SHOWN HERE ON THIS TIE SHEET IS CORRECT AND COMPLETE TO THE BEST OF MY KNOWLEDGE AND BELIEF.

PROFESSIONAL LAND SURVEYOR

DATE 6/26/17

### - TIE SKETCH -

NOTE: THE CORNER FALLS 22'± EAST OF THE CENTERLINE OF 11TH AVE.



- 3/4" x 18" IRON REBAR SET, 1.50#/FT
- ⊕ HARRISON (BROKEN TOP) FOUND
- ⊙ WITNESS POWER POLE FOUND
- VINYL "T" POST

ADAMS COUNTY

CORNER NO. 140

Survey Monument Record

SECTION 32

TYPE OF MONUMENT: 30" HARRISON

TOWN 18

STATE PLANE COORDINATES: N

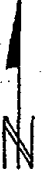
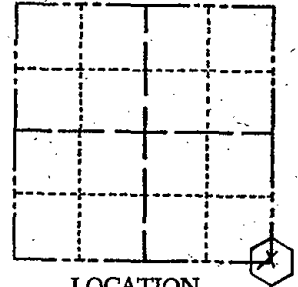
RANGE 6

E

ELEVATION - M.S.L. DATUM:

THETA ANGLE:

FIELD BOOK: 103 PAGE 140



BASIS FOR MONUMENT LOCATION

(Use reverse side if necessary)

Show info such as: History of corner, with reference to Vol. and pg, dates, surveyor; exact description of monument replaced; if location computed, by taped or EDM traverse; landowner remarks, etc.

SEAL:

LOCATION (Indicated by 'X')

Found 2" capped iron pipe- set 30" Harrison monument on June 20, 1972.

by Anthony B. Kiedrowski R.L.S. 878

Pipe found bent over.



TOP SECTION BROKEN 10-11-75 SS

TIES OK 11-30-78 RN-DA

" 3-2-83 SS

1 TIE GONE 3-10-88 GR-SS  
NOTHING AVAILABLE

OK, 7-29-92 JG-BS

1-NEW, 2-25-98-JG

CERTIFIED CORRECT:

Anthony B. Kiedrowski  
Registered Land Surveyor

DATE: 1-16-73

TIE SKETCH 2-GONE, 4-NEW, MON 1' DEEP 12-13-02-JG  
OK, 11-26-07-JG

(Show at least four ties)

