

PUBLIC LAND SURVEY MONUMENT RECORD

TYPE OF MONUMENT: HARRISON
ADAMS COUNTY COORDINATES, NAD 83 (2007)

N. 224391.151

E. 554693.218

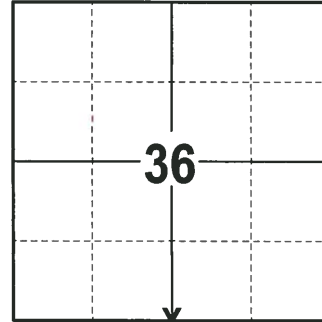
ELEVATION- DATUM

FIELD WORK DATE: 01/08/2018

BASIS FOR MONUMENT LOCATION

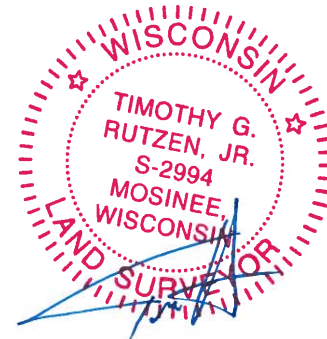
1976 - PLS 1053 PRIOR EXCAVATION WITH A BACKHOE YIELDED NO EVIDENCE OF THE ORIGINAL CORNER. CALCULATED THE LOCATION BY PROPORTIONATE MEASUREMENT BETWEEN THE SOUTHWEST CORNER AND THE SOUTHEAST CORNER OF THE SECTION. SET A HARRISON MONUMENT AND TIED OUT.

2017 - PLS 2994 FOUND A HARRISON MONUMENT 18" BELOW THE ROAD SURFACE AND 1 WITNESS TREE. THE MONUMENT AGREES WITH THE EXISTING WITNESS TREE. ACCEPTED THE HARRISON MONUMENT AS THE CORNER LOCATION. SET 4 NEW TIES AND MEASURED TO THE TIES AND WITNESS TREE.



LOCATION
(INDICATE CORNER BY "X")

SEAL:



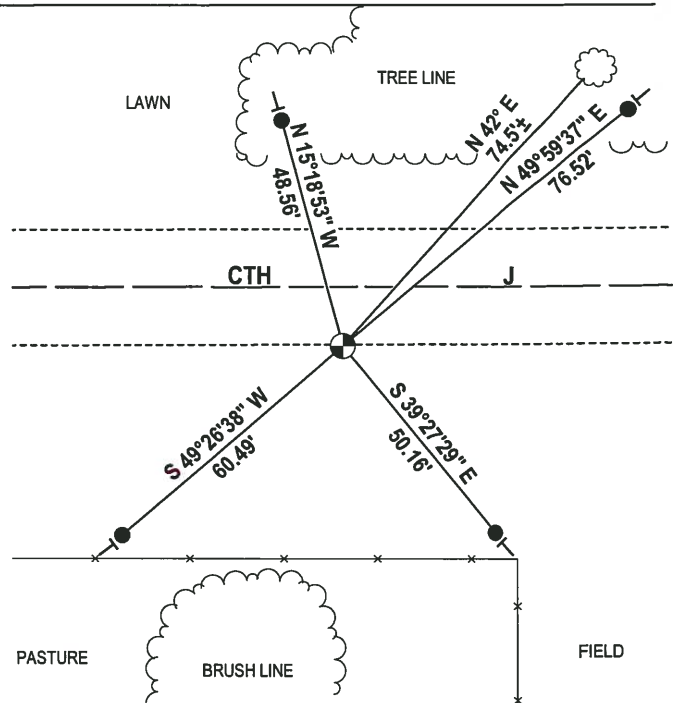
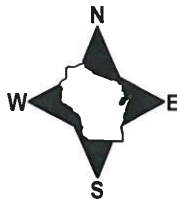
DATA SHOWN HERE ON THIS TIE SHEET IS CORRECT AND COMPLETE TO THE BEST OF MY KNOWLEDGE AND BELIEF.

PROFESSIONAL LAND SURVEYOR

DATE 2-2-18

- TIE SKETCH -

NOTE: THE CORNER FALLS 12± SOUTH OF THE CENTERLINE OF CTH J.



- 3/4" x 18" IRON REBAR SET, 1.50#/FT
- ⊙ HARRISON FOUND
- └ VINYL "T" POST
- ☁ WITNESS TREE FOUND

ADAMS COUNTY

Survey Monument Record

TYPE OF MONUMENT: Harrison

STATE PLANE COORDINATES: N _____
E _____

ELEVATION — M.S.L. DATUM: _____

THETA ANGLE: _____

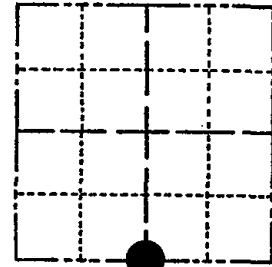
FIELD BOOK: _____ PAGE _____

CORNER NO. 132

SECTION 36

TOWN T 18 N

RANGE R 6 E



LOCATION
(Indicated by 'X')

SEAL:

BASIS FOR MONUMENT LOCATION

(Use reverse side if necessary)

Show info such as: History of corner, with reference to Vol. and pg. dates, surveyor; exact description of monument replaced; if location computed, by taped or EDM traverse; landowner remarks, etc.

prior excavation with backhoe yeilds no evidence of original corner

set corner by proportionate measure between the southwest corner and the southeast corner of the section



OK 12-1-78 RN-DA
3-23-83 GR-SS OK
2-12-88 GR-SS OK
7-28-92 JG-BS O.K.
1-GONE, 1-NEW 2-2-98-JG

CERTIFIED CORRECT:

Richard G. Millman
Registered Land Surveyor

DATE: DEC. '76

TIE SKETCH OK, 12-16-02-JG
1-GONE, 1-NEW, MON. OK, 11-26-07-JG
(Show at least four ties)

NOTE: Ties to trees to nail in disc.

6" →
Box ELDER
IN CLUSTER OF
SMALLER TREES
NO BT

