

36
SECTION

18
TOWN

06
RANGE

ADAMS COUNTY

COUNTY CORNER NO: 133

ROMPORTOL ID: 41806360000

PUBLIC LAND SURVEY MONUMENT RECORD

TYPE OF MONUMENT: HARRISON
ADAMS COUNTY COORDINATES, NAD 83 (2007)

N. 224412.751

E. 557332.125

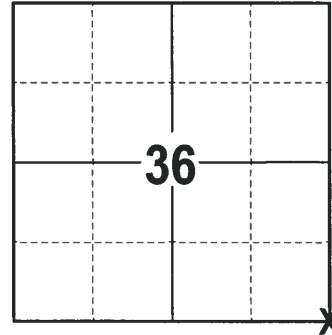
ELEVATION- _____ DATUM _____

FIELD WORK DATE: 12/05/2017

BASIS FOR MONUMENT LOCATION

1976 - PLS 1053 EXCAVATED AND FOUND THE BOTTOM THIRD OF A STONE MONUMENT. SET A HARRISON MONUMENT AT THE LOCATION THE STONE MONUMENT WAS FOUND AND TIED OUT.

2017 - PLS 2994 FOUND A HARRISON MONUMENT 8" BELOW THE ROAD SURFACE AND 1 PROPERTY IRON. ACCEPTED THE HARRISON MONUMENT AS THE CORNER LOCATION. SET 3 NEW TIES AND MEASURED TO THE TIES.



LOCATION
(INDICATE CORNER BY "X")

SEAL:



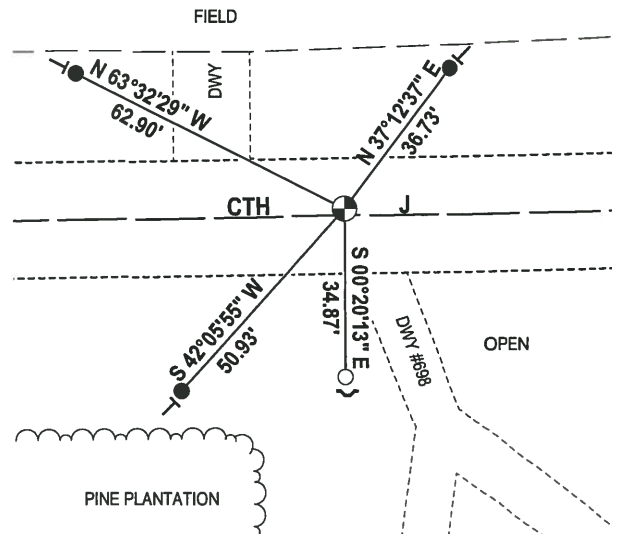
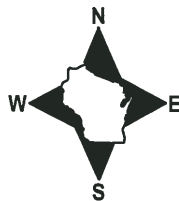
DATA SHOWN HERE ON THIS TIE SHEET IS CORRECT AND COMPLETE TO THE BEST OF MY KNOWLEDGE AND BELIEF.

PROFESSIONAL LAND SURVEYOR

DATE 1-4-18

- TIE SKETCH

NOTE: THE CORNER FALLS 3± NORTH OF THE CENTERLINE OF CTH J.



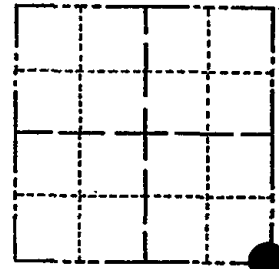
- 3/4" x 18" IRON REBAR SET, 1.50#/FT
- 3/4" IRON ROD FOUND
- ⊕ HARRISON FOUND
- ~ STEEL FENCE POST
- └ VINYL "T" POST

ADAMS COUNTY

Survey Monument Record

TYPE OF MONUMENT: Harrison
STATE PLANE COORDINATES: N
E
ELEVATION - M.S.L. DATUM:
THETA ANGLE:
FIELD BOOK: PAGE

CORNER NO. 133
SECTION 36
TOWN T 18 N
RANGE R 6 E



LOCATION (Indicated by 'X')

BASIS FOR MONUMENT LOCATION

(Use reverse side if necessary)

Show info such as: History of corner, with reference to Vol. and pg, dates, surveyor; exact description of monument replaced; if location computed, by taped or EDM traverse; landowner remarks, etc.

excavated and found the bottom third of a stone monument

replaced at the location of found monument

SEAL:



OK 9-12-78 RN-SS
3-10-83 GR-SS
2 NEW TIES 3-10-88 GR-SS
O.K. 7-28-92, JG-BS
1-GONE, 1-NEW, 2-2-98-JG

CERTIFIED CORRECT:

Richard G. Millman

Registered Land Surveyor

DATE: DEC. '76

TIE SKETCH

1-NEW, 1-GONE, MON. OK, 12-16-82-JG
2-GONE, 2-NEW, MON. OK, 11-26-87-JG

(Show at least four ties)

NOTE: Ties in trees to nail in disc.

