

05
SECTION

18
TOWN

07
RANGE

ADAMS COUNTY

COUNTY CORNER NO.: 16

ROMPORTOL ID: 41807052000

PUBLIC LAND SURVEY MONUMENT RECORD

TYPE OF MONUMENT: HARRISON
ADAMS COUNTY COORDINATES, NAD 83 (2007)

N. 253540.438

E. 567436.937

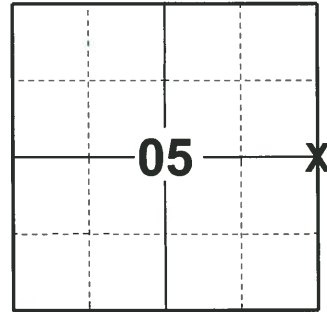
ELEVATION- - - - DATUM - - - -

FIELD WORK DATE: 01/08/2020

BASIS FOR MONUMENT LOCATION

1983 - PLS 1551 RESET THE CORNER FROM REMAINS OF ORIGINAL NORTHWEST BEARING TREE, THE STUMP OF WHICH WAS FOUND AND REMARKED BY M.C. SMITH IN 1902 (VOL. 1, PG. 22). STUMP IS NOW A MOSS-COVERED HUMMOCK. REMAINS FROM CENTER WERE VERIFIED AS WHITE PINE BY U.S. FOREST LAB IN MADISON. SIZEABLE AREA WAS EXCAVATED FOR STAKE, BUT NOT FOUND, SANDY SOIL CONDITIONS EXIST WITH WATER TABLE AT ABOUT 30". LOCATION OF THIS CORNER AGREES WITH DISTANCES AROUND THE SECTION BY M.C. SMITH WITHIN A FEW FEET.

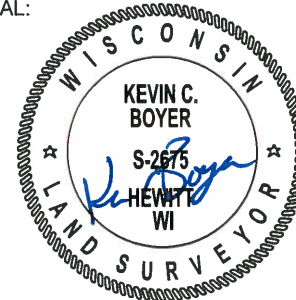
2020 - PLS 2675 FOUND HARRISON FLUSH WITH THE GROUND AND 3 WITNESS TREES, ALSO FOUND A DEPRESSION THAT BEARS N84°W 4'± TO THE APPROXIMATE CENTER FROM HARRISON. THE MONUMENT AGREES WITH ALL 3 WITNESS TREES. ACCEPTED THE HARRISON AS THE CORNER LOCATION. SET 4 NEW TIES AND MEASURED TO THE WITNESS TREES, AND APPROXIMATE CENTER OF DEPRESSION.



LOCATION

(INDICATE CORNER BY "X")

SEAL:

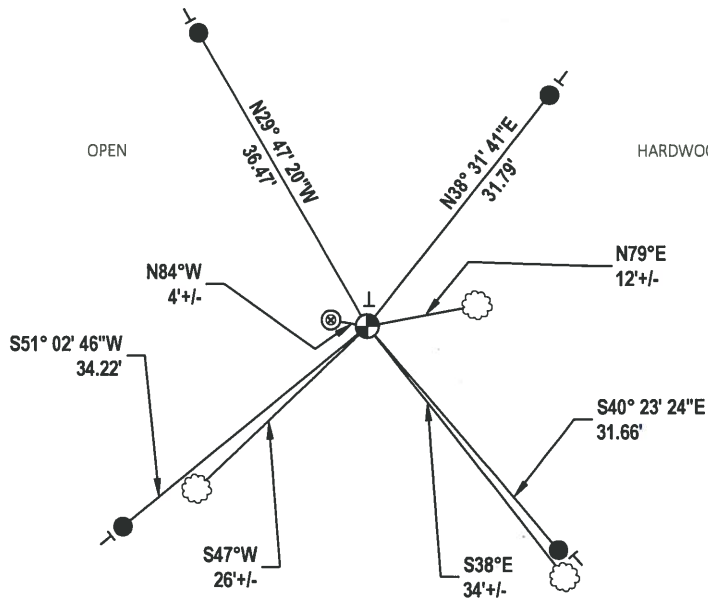


DATA SHOWN HERE ON THIS TIE SHEET IS CORRECT AND COMPLETE TO THE BEST OF MY KNOWLEDGE AND BELIEF.

PROFESSIONAL LAND SURVEYOR

DATE 3/9/2020

- TIE SKETCH



- SET 3/4" x 18" IRON REBAR, 1.50#/FT
- ⊕ FOUND HARRISON MONUMENT
- ⊙ WITNESS DEPRESSION HOLE
- ┌ VINYL "T" POST
- ☁ WITNESS TREE

U.S. PUBLIC LAND SURVEY MONUMENT RECORD

ADAMS COUNTY

TYPE OF MONUMENT: Standard Harrison

STATE PLANE COORDINATES: N _____
E _____

ELEVATION — M.S.L. DATUM: _____

THETA ANGLE: _____

FIELD BOOK: Adams County PAGE 40

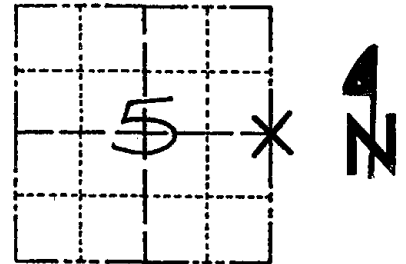
DRAWN BY: D. Riesop

CORNER NO. 16

SECTION 5

TOWN 18N.

RANGE 7E.



LOCATION
(Indicated by 'X')

SEAL:



DATA SHOWN HERE ON
CERTIFIED CORRECT:

David C. Riesop
Registered Land Surveyor

DATE: 5/23/83

BASIS FOR MONUMENT LOCATION

Show info such as: History of corner, with reference to Vol. and pg., dates, surveyor; exact description of monument replaced; if location computed, by taped or EDM traverse; landowner remarks, etc. (Use reverse side if necessary) (in conformance with Section A-E 502 of the Wisconsin Administrative Code)

Corner was reset from remains of original Northwest bearing tree, the stump of which was found and remarked by M. C. Smith in 1902 (vol. 1, page 22)

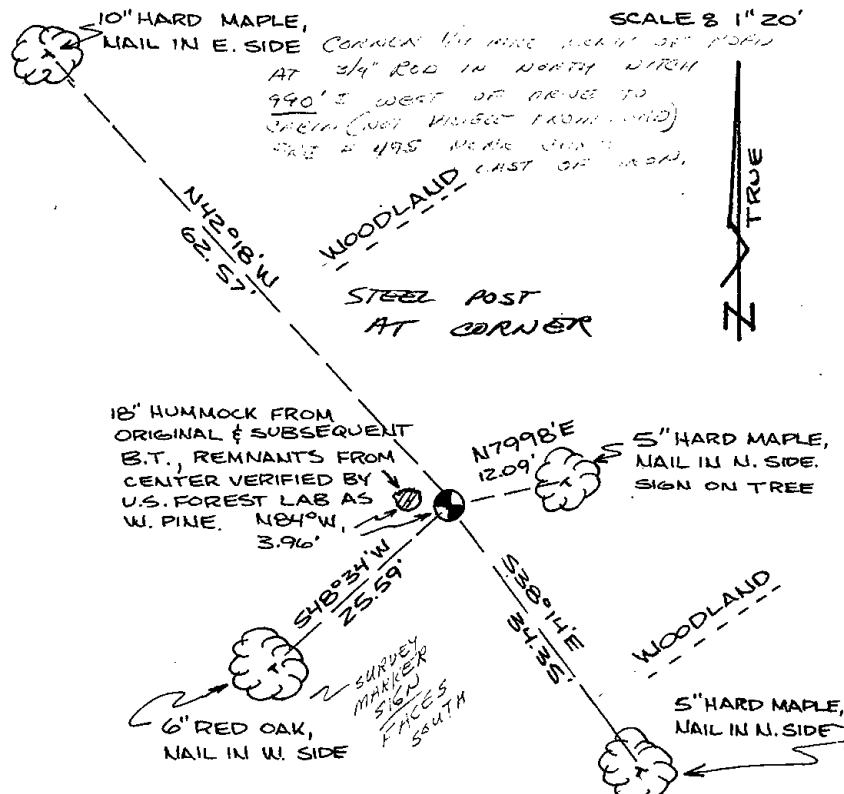
Stump is now a moss-covered hummock. Remains from center were verified as White Pine by U.S. Forest Lab in Madison.

Sizeable area was excavated for stake, but not found, sandy soil conditions exist with water table at about 30".

Location of this corner agrees with distances around the section by M.C. Smith within a few feet.

TIE SKETCH

Show at least four ties, also fence lines, roads, topo, size and type of witness trees and if off road - best way to arrive at corner.



filed for record this 5th day of JUNE 1983 per 59.60 Wisconsin Statutes.
D. Rhinehart
ADAMS COUNTY SURVEYOR

MAINTENANCE RECORD

Date	Init.	Remarks
12-4-87	SS	OK
6-8-92	JG BS	OK
12-31-97	SS	OK
1-22-02	JG	OK
02-27-07	SS	OK

Dear Mr. [Name],

I have received your letter of the 15th and am glad to hear from you. I am sorry that I cannot give you a more definite answer at this time, but I am sure that you will understand my position.

I am sure that you will find the enclosed information of interest.

Very truly yours,

[Name]

I am sure that you will find the enclosed information of interest.

I am sure that you will find the enclosed information of interest.

I am sure that you will find the enclosed information of interest.

I am sure that you will find the enclosed information of interest.

I am sure that you will find the enclosed information of interest.

I am sure that you will find the enclosed information of interest.

I am sure that you will find the enclosed information of interest.

I am sure that you will find the enclosed information of interest.

I am sure that you will find the enclosed information of interest.

I am sure that you will find the enclosed information of interest.

I am sure that you will find the enclosed information of interest.

I am sure that you will find the enclosed information of interest.

I am sure that you will find the enclosed information of interest.

I am sure that you will find the enclosed information of interest.

I am sure that you will find the enclosed information of interest.