

## PUBLIC LAND SURVEY MONUMENT RECORD

TYPE OF MONUMENT: HARRISON (BROKEN-TOP)  
ADAMS COUNTY COORDINATES, NAD 83 (2007)

N. 250904.139  
E. 559498.116

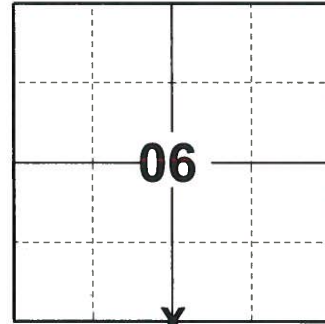
ELEVATION- \_\_\_\_\_ DATUM \_\_\_\_\_

FIELD WORK DATE: 05/16/2019

### BASIS FOR MONUMENT LOCATION

1983 - PLS 1551 SEARCHED AREA FOR STAKE AND WITNESS TREES, NOTHING WAS FOUND. CORNER WAS RE-ESTABLISHED ON A STRAIGHT LINE BETWEEN SECTION CORNERS AT A PRORATED E-W POSITION. THIS LOCATION FALLS ON STRANDS OF AN OLD N-S FENCE AND AGREES WITH THE DISTANCE NORTH TO THE COMPUTED CENTER OF SECTION.

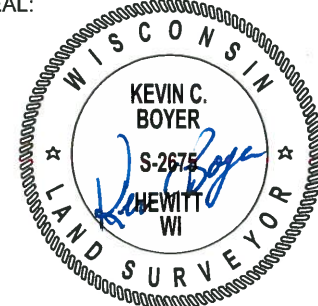
2019 - PLS 2675 FOUND HARRISON (BROKEN-TOP) 6" BELOW THE GROUND SURFACE AND 4 WITNESSES. THE MONUMENT AGREES WITH ALL 4 WITNESSES. ACCEPTED THE HARRISON (BROKEN-TOP) AS THE CORNER LOCATION. SET 4 NEW TIES AND MEASURED TO THE EXISTING WITNESSES.



**LOCATION**

(INDICATE CORNER BY "X")

SEAL:

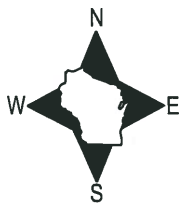


DATA SHOWN HERE ON THIS TIE SHEET IS CORRECT AND COMPLETE TO THE BEST OF MY KNOWLEDGE AND BELIEF.

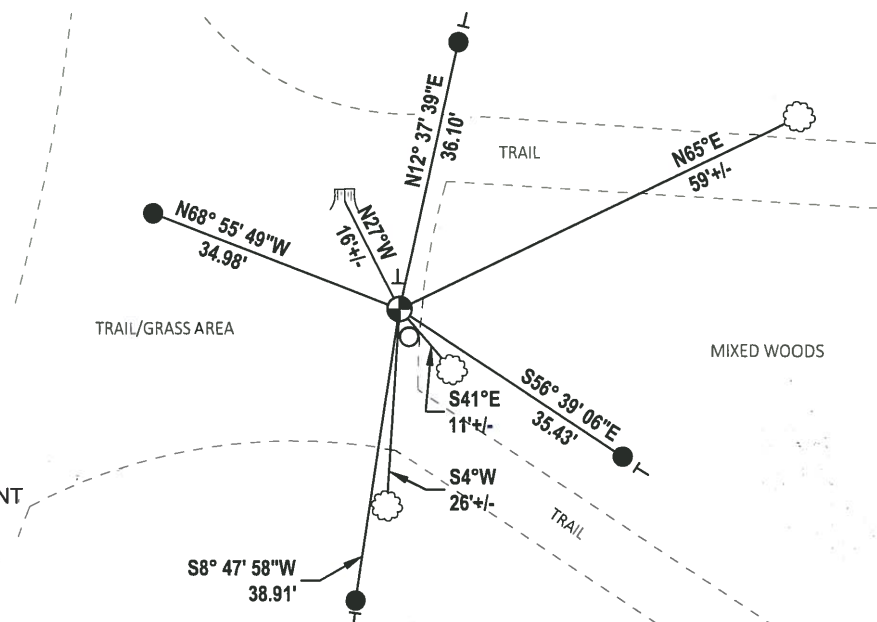
PROFESSIONAL LAND SURVEYOR

DATE 6/4/19

### - TIE SKETCH



- SET 3/4" x 18" IRON REBAR, 0.50#/FT
- FOUND 3/4" IRON PIPE
- ⊕ FOUND HARRISON (BROKEN-TOP) MONUMENT
- 🌳 WITNESS STUMP
- ⊥ VINYL "T" POST
- 🌳 WITNESS TREE



# U.S. PUBLIC LAND SURVEY MONUMENT RECORD

## ADAMS COUNTY

TYPE OF MONUMENT: Standard Harrison

STATE PLANE COORDINATES: N \_\_\_\_\_  
E \_\_\_\_\_

ELEVATION — M.S.L. DATUM: \_\_\_\_\_

THETA ANGLE: \_\_\_\_\_

FIELD BOOK: Adams County PAGE 43

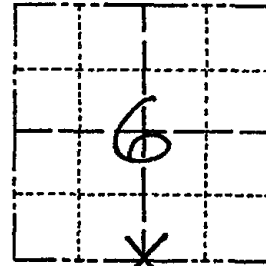
DRAWN BY: D. Riesop

CORNER NO. 22

SECTION 6

TOWN 18N

RANGE 7E



LOCATION  
(Indicated by 'X')

### BASIS FOR MONUMENT LOCATION

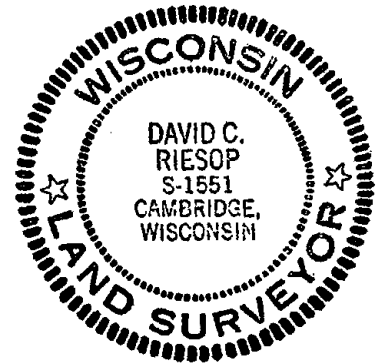
Show info such as: History of corner, with reference to Vol. and pg., dates, surveyor; exact description of monument replaced; if location computed, by taped or EDM traverse; landowner remarks, etc. (Use reverse side if necessary)  
(in conformance with Section A-E 502 of the Wisconsin Administrative Code)

Searched area for stake and witness trees, nothing was found.

Corner was re-established on a straight line between Section corners at a prorated E-W position.

This location falls on strands of an old N-S fence and agrees with the distance North to the computed center of Section.

SEAL:



DATA SHOWN HERE ON  
CERTIFIED CORRECT:

David C. Riesop  
Registered Land Surveyor

DATE: 5/26/83

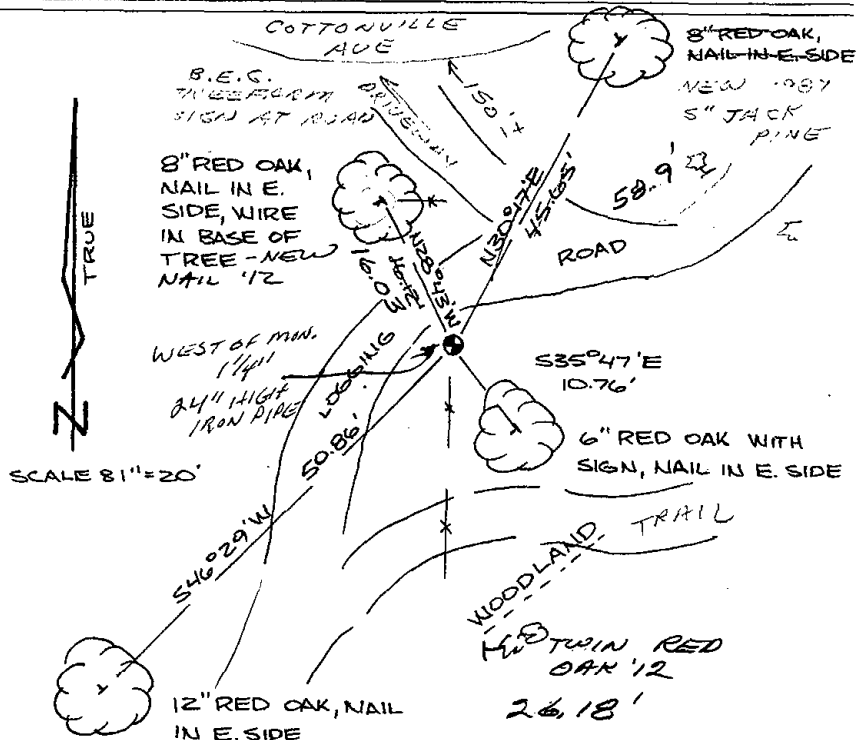
filed for record this 31

day of JUNE 1983  
per 59.60 Wisconsin Statutes

S. Chinchad  
ADAMS COUNTY SURVEYOR

### TIE SKETCH

Show at least four ties, also fence lines, roads, topo, size and type of witness trees and if off road - best way to arrive at corner.



### MAINTENANCE RECORD

Date	Init.	Remarks
12-1-87	SS	1 NEW TIE
5-13-92	JG	ALL OK
12/22/97	SG-SS	ALL OK
1-22-02	" "	OK
2-21-07	" "	OK
2-23-12	MS	2 NEW TIES