

## PUBLIC LAND SURVEY MONUMENT RECORD

TYPE OF MONUMENT: HARRISON  
ADAMS COUNTY COORDINATES, NAD 83 (2007)

N. 250953.365

E. 562146.136

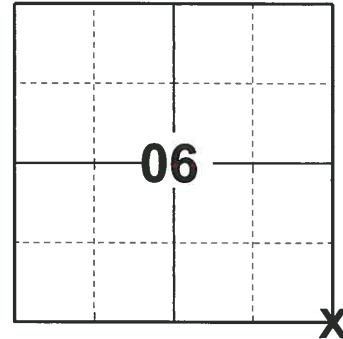
ELEVATION- - - - DATUM - - - -

FIELD WORK DATE: 05/16/2019

### BASIS FOR MONUMENT LOCATION

1983 - PLS 1551 CORNER WAS RESET FROM WHITE OAK BEARING TREE MARKED BY M.C. SMITH IN 1902 SURVEY OF SECTION 5 (VOL. 1, PG. 22) TREE WAS FOUND TO BE HOLLOW BY INCREMENT BORING, BUT CORE RETRIEVED WOULD PRORATE TREES AGE TO CORRECT SIZE AT TIME OF SURVEY. CORNER LOCATION FITS OCCUPATION OF OLD DITCH, AND IS WITHIN 0.6' OF SMITH'S DISTANCE TO THE NORTHWEST CORNER OF THE SECTION.

2019 - PLS 2675 FOUND HARRISON 2" ABOVE THE GROUND SURFACE AND 5 WITNESSES. THE MONUMENT AGREES WITH ALL 5 WITNESSES. ACCEPTED THE HARRISON AS THE CORNER LOCATION. SET 4 NEW TIES AND MEASURED TO THE EXISTING WITNESSES.



**LOCATION**  
(INDICATE CORNER BY "X")

SEAL:

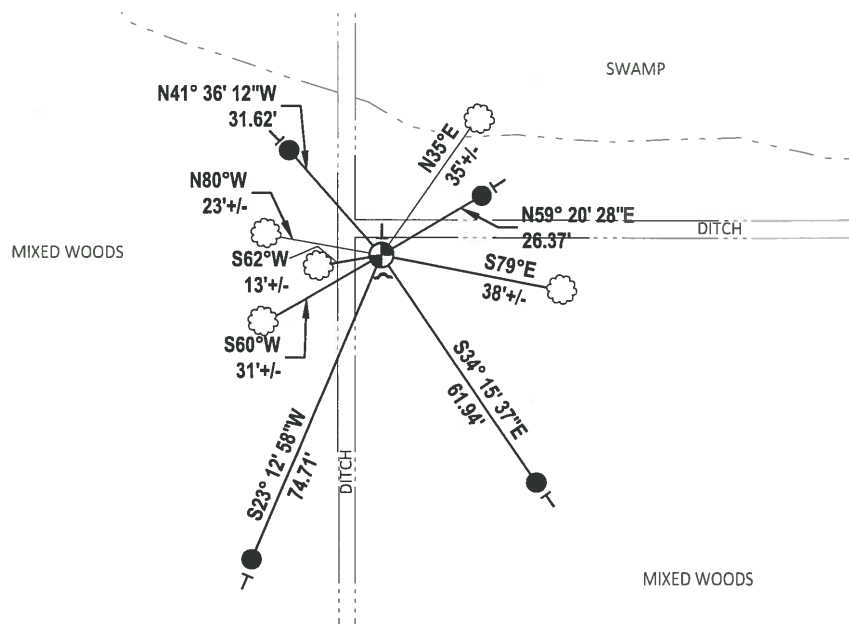


DATA SHOWN HERE ON THIS TIE SHEET IS CORRECT AND COMPLETE TO THE BEST OF MY KNOWLEDGE AND BELIEF.

PROFESSIONAL LAND SURVEYOR

DATE 6/4/19

### TIE SKETCH



- SET 3/4" x 18" IRON REBAR, 0.50#/FT
- ⊕ FOUND HARRISON MONUMENT
- ~ STEEL FENCE POST
- └ VINYL "T" POST
- ☼ WITNESS TREE

# U.S. PUBLIC LAND SURVEY MONUMENT RECORD

## ADAMS COUNTY

TYPE OF MONUMENT: Standard Harrison

STATE PLANE COORDINATES: N \_\_\_\_\_  
E \_\_\_\_\_

ELEVATION — M.S.L. DATUM: \_\_\_\_\_

THETA ANGLE: \_\_\_\_\_

FIELD BOOK: Adams County PAGE 39

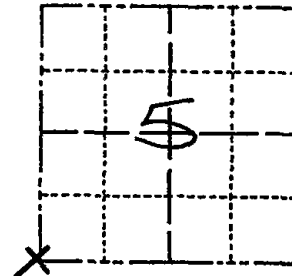
DRAWN BY: D. Riesop

CORNER NO. 23

SECTION 5

TOWN 18N.

RANGE 7E.



LOCATION  
(Indicated by 'X')



### BASIS FOR MONUMENT LOCATION

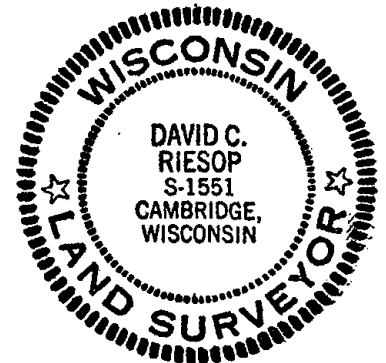
Show info such as: History of corner, with reference to Vol. and pg., dates, surveyor; exact description of monument replaced; if location computed, by taped or EDM traverse; landowner remarks, etc. (Use reverse side if necessary) (in conformance with Section A-E 502 of the Wisconsin Administrative Code)

Corner was reset from White Oak bearing tree marked by M. C. Smith in 1902 survey of Section 5. (Vol. 1, P. 22)

Tree was found to be hollow by increment boring, but core retrieved would prorate trees age to correct size at time of survey.

Corner location fits occupation of old ditch, and is within 0.6' of Smith's distance to the Northwest corner of the section.

SEAL:



DATA SHOWN HERE ON  
CERTIFIED CORRECT:

*David C. Riesop*  
Registered Land Surveyor

DATE: 5/23/83

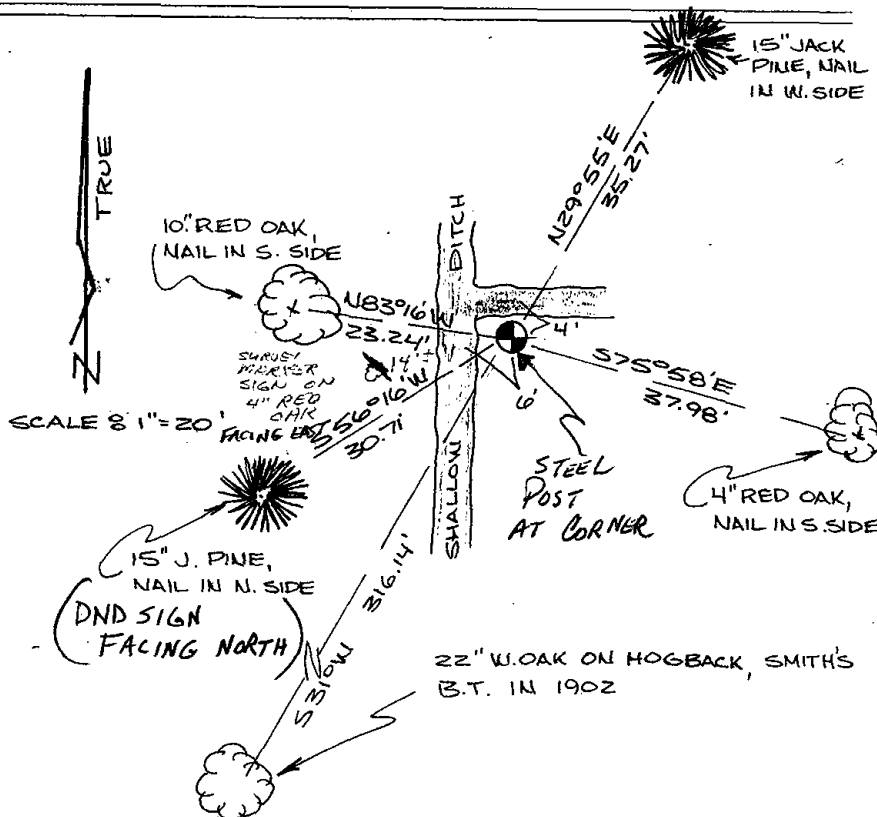
filed for record this 24 \_\_\_\_\_

day of JUNE 1983  
per 59.60 Wisconsin Statutes.

*D. Riesop*  
ADAMS COUNTY SURVEYOR

### TIE SKETCH

Show at least four ties, also fence lines, roads, topo, size and type of witness trees and if off road - best way to arrive at corner.



### MAINTENANCE RECORD

Date	Init.	Remarks
10-1-87	SS	O.K.
12/31/97	JG	O.K.
1-21-02	JG	O.K.
10-19-07	JG	ALL OK
2-23-12	MS	OK