

## PUBLIC LAND SURVEY MONUMENT RECORD

TYPE OF MONUMENT: HARRISON  
ADAMS COUNTY COORDINATES, NAD 83 (2007)

N. 250867.664

E. 572728.656

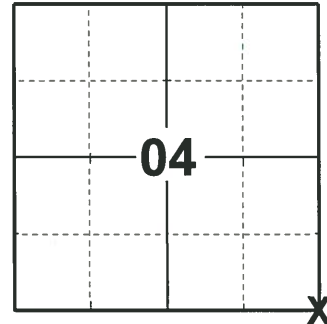
ELEVATION- - - - DATUM - - - -

FIELD WORK DATE: 01/06/2020

### BASIS FOR MONUMENT LOCATION

1983 - PLS 1551 HARRISON WAS RESET FROM CHARRED REMAINS OF ORIGINAL NORTHEAST BEARING TREE. (18" PINE IN 1852) THIS LOCATION AGREES WITH REMAINS OF OLD FENCE LINE TO NORTH AND EAST OF CORNER, AND CHECKS WITH PRORATED DISTANCES FROM ORIGINAL SURVEY.

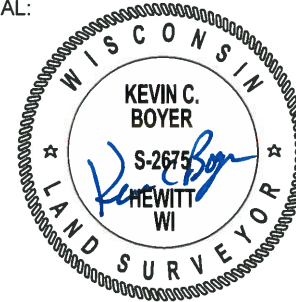
2020 - PLS 2675 FOUND HARRISON FLUSH WITH THE GROUND AND 4 WITNESS TREES. THE MONUMENT AGREES WITH ALL 4 WITNESS TREES. ACCEPTED THE HARRISON AS THE CORNER LOCATION. SET 4 NEW TIES AND MEASURED TO THE EXISTING WITNESS TREES.



LOCATION

(INDICATE CORNER BY "X")

SEAL:



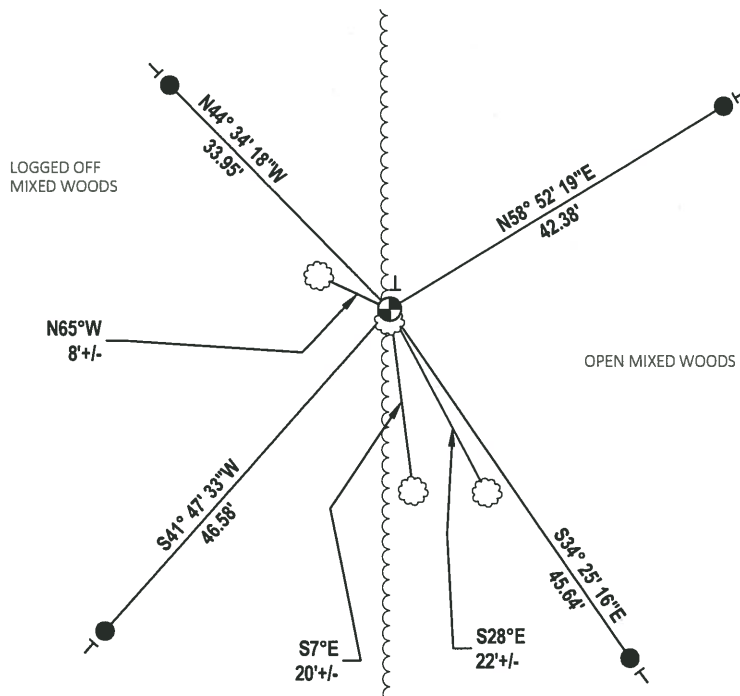
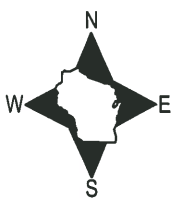
DATA SHOWN HERE ON THIS TIE SHEET IS CORRECT AND COMPLETE TO THE BEST OF MY KNOWLEDGE AND BELIEF.

PROFESSIONAL LAND SURVEYOR

DATE 3/9/2020

### - TIE SKETCH

NOTE: WITNESS TREE IS S0°E, 1'±.



- SET 3/4" x 18" IRON REBAR, 1.50#/FT
- ⊕ FOUND HARRISON MONUMENT
- VINYL "T" POST
- ☼ WITNESS TREE

# U.S. PUBLIC LAND SURVEY MONUMENT RECORD

NW COR of 10

## ADAMS COUNTY

TYPE OF MONUMENT: Standard Harrison

STATE PLANE COORDINATES: N \_\_\_\_\_

E \_\_\_\_\_

ELEVATION — M.S.L. DATUM: \_\_\_\_\_

THETA ANGLE: \_\_\_\_\_

FIELD BOOK: Adams County PAGE 41

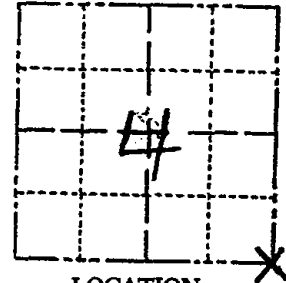
DRAWN BY: D. Riesop

CORNER NO. 27

SECTION 4

TOWN 18N.

RANGE 7E.



LOCATION (Indicated by 'X')

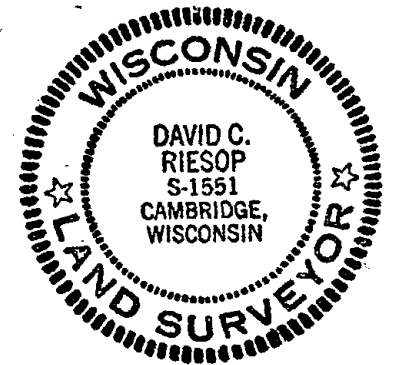
### BASIS FOR MONUMENT LOCATION

Show info such as: History of corner, with reference to Vol. and pg., dates, surveyor; exact description of monument replaced; if location computed, by taped or EDM traverse; landowner remarks, etc. (Use reverse side if necessary) (in conformance with Section A-E 502 of the Wisconsin Administrative Code)

Corner below was reset from charred remains of original Northeast bearing tree. (18" Pine in 1852)

This location agrees with remains of old fence line to North and East of corner, and checks with prorated distances from original survey

SEAL:



DATA SHOWN HERE ON CERTIFIED CORRECT:

*David C. Riesop*  
Registered Land Surveyor

DATE: 5/23/83

filled for record this 24

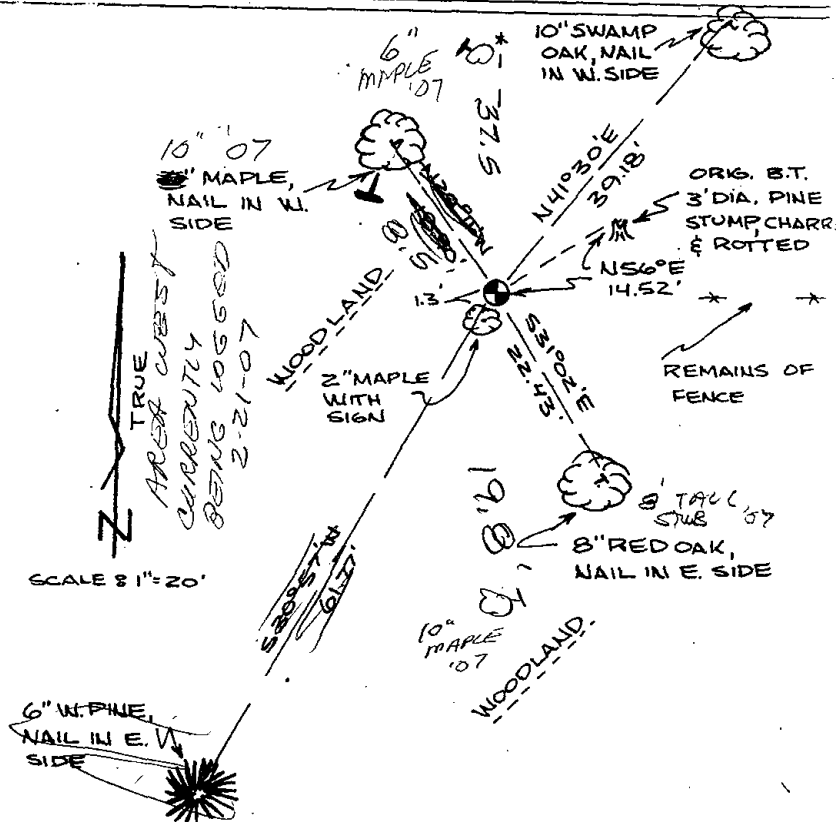
day of JUNE 19 83

per 59.60 Wisconsin Statutes.

*D. Riesop*  
ADAMS COUNTY SURVEYOR

### TIE SKETCH

Show at least four ties, also fence lines, roads, topo, size and type of witness trees and if off road - best way to arrive at corner.



### MAINTENANCE RECORD

Date	Init.	Remarks
3-9-87	SS	OK
6-5-92	JG-BS	OK
12/31/97	JG-SS	OK
2-21-07	JG-SS	3-NEW TIES

# U.S. PUBLIC LAND SURVEY MONUMENT RECORD

## ADAMS COUNTY

TYPE OF MONUMENT: Standard Harrison

STATE PLANE COORDINATES: N \_\_\_\_\_  
E \_\_\_\_\_

ELEVATION — M.S.L. DATUM: \_\_\_\_\_

THETA ANGLE: \_\_\_\_\_

FIELD BOOK: Adams County PAGE 41

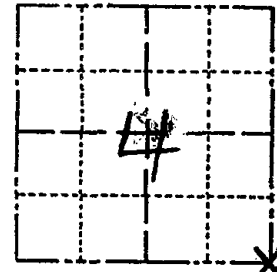
DRAWN BY: D. Riesop

CORNER NO. 27

SECTION 4

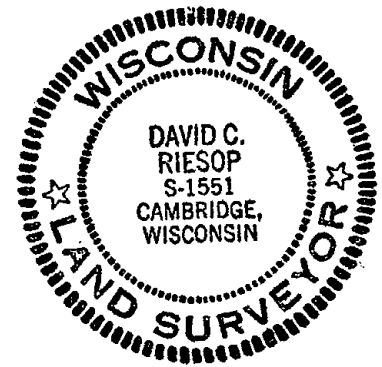
TOWN 18N.

RANGE 7E.



LOCATION  
(Indicated by 'X')

SEAL:



DATA SHOWN HERE ON  
CERTIFIED CORRECT:

*David C. Riesop*  
Registered Land Surveyor

DATE: 5/23/83

### BASIS FOR MONUMENT LOCATION

Show info such as: History of corner, with reference to Vol. and pg., dates, surveyor; exact description of monument replaced; if location computed, by taped or EDM traverse; landowner remarks, etc. (Use reverse side if necessary) (in conformance with Section A-E 502 of the Wisconsin Administrative Code)

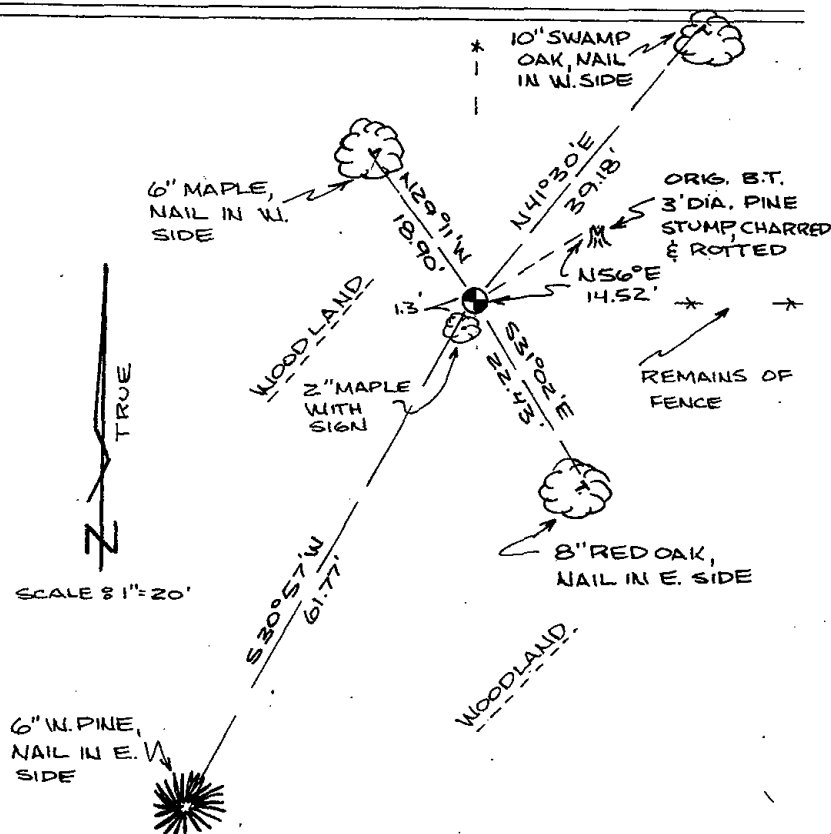
Corner below was reset from charred remains of original Northeast bearing tree. (18" Pine in 1852)

This location agrees with remains of old fence line to North and East of corner, and checks with prorated distances from original survey

filed for record this... 84  
day of JUNE 19 83  
per 59.60 Wisconsin Statutes.  
*D. Riesop*  
ADAMS COUNTY SURVEYOR

### TIE SKETCH

Show at least four ties, also fence lines, roads, topo, size and type of witness trees and if off road - best way to arrive at corner.



### MAINTENANCE RECORD

Date	Init.	Remarks
3-9-87	BB	OK
6-5-92	JG-RS	OK
12/31/97	JG-SS	OK
1-18-02	GL	OK

