

PUBLIC LAND SURVEY MONUMENT RECORD

TYPE OF MONUMENT: HARRISON
 ADAMS COUNTY COORDINATES, NAD 83 (2007)

N. 250944.387

E. 578036.409

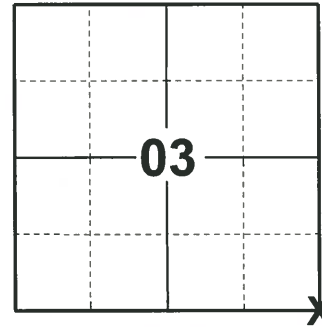
ELEVATION- _____ DATUM _____

FIELD WORK DATE: 01/15/2020

BASIS FOR MONUMENT LOCATION

1973 - PLS 878 FOUND RAILROAD SPIKE AND ACCEPTED AS CORNER AFTER A TRAVERSE OF ENTIRE SECTION. EXCAVATED LARGE AREA WITH BACKHOE, BUT FOUND NOTHING ELSE. REPLACED WITH HARRISON MONUMENT.

2020 - PLS 2675 FOUND HARRISON 6"± BELOW THE ROAD SURFACE AND 2 WITNESSES. THE MONUMENT AGREES WITH BOTH WITNESSES. ACCEPTED THE HARRISON AS THE CORNER LOCATION. SET 4 NEW TIES AND MEASURED TO THE EXISTING WITNESSES.



LOCATION
 (INDICATE CORNER BY "X")

SEAL:



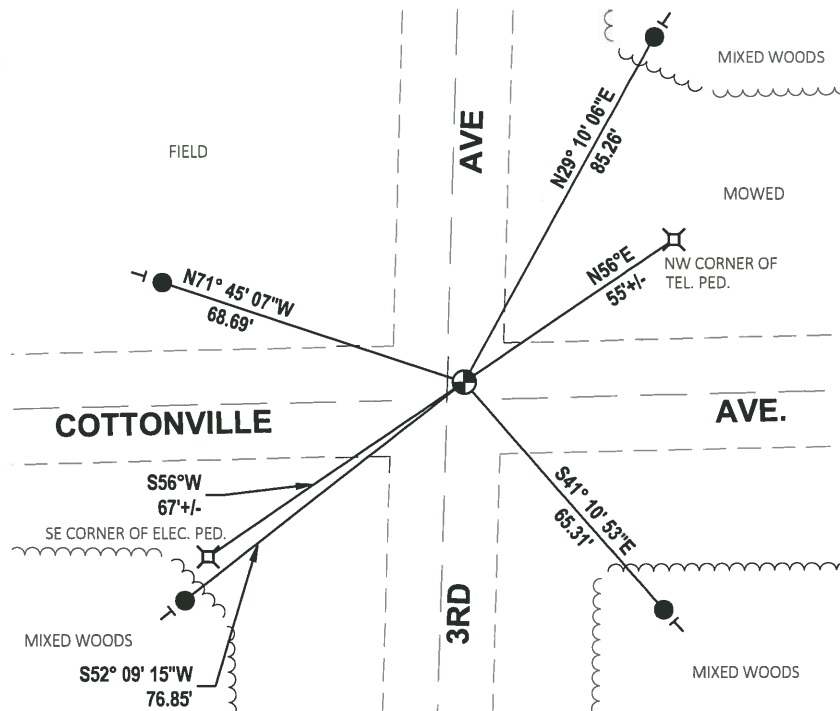
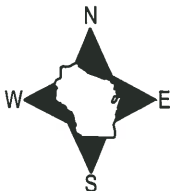
DATA SHOWN HERE ON THIS TIE SHEET IS CORRECT AND COMPLETE TO THE BEST OF MY KNOWLEDGE AND BELIEF.

PROFESSIONAL LAND SURVEYOR

DATE 3/9/2020

- TIE SKETCH

NOTE: THE CORNER LANDS 3.5'± NORTH OF COTTONVILLE AVE. CENTERLINE AND 3.5'± EAST OF 3RD AVE. CENTERLINE



- SET 3/4" x 18" IRON REBAR, 1.50#/FT
- ⊕ FOUND HARRISON MONUMENT
- ┆ VINYL "T" POST

ADAMS COUNTY

Survey Monument Record

TYPE OF MONUMENT: Harrison Std.

STATE PLANE COORDINATES: N _____

E _____

ELEVATION — M.S.L. DATUM: _____

THETA ANGLE: _____

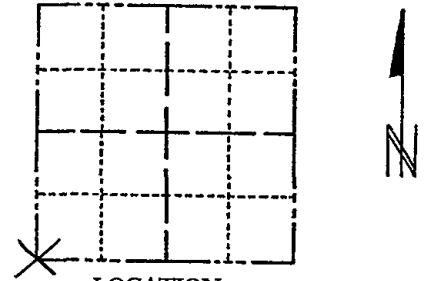
FIELD BOOK: 107 PAGE 107

CORNER NO. 253 ⁽²⁹⁾

SECTION 2

TOWN 18

RANGE 2



LOCATION
(Indicated by 'X')

SEAL:

BASIS FOR MONUMENT LOCATION

(Use reverse side if necessary)

Show info such as: History of corner, with reference to Vol. and pg, dates, surveyor; exact description of monument replaced; if location computed, by taped or EDM traverse; landowner remarks, etc.

Found railroad spike and accepted as corner after a traverse of entire section. Excavated large area with backhoe but found nothing else.

CORNER	O.K.	3-28-77	GR-SS
"	"	5-17-82	PK-SS
"	"	3-9-87	GR-SS
"	"	11-26-91	KZ-SS
1-GONE, 1-NEW		12-31-97	JG-SS
"	"	1-18-02	GR-JG
OK,		4-6-07	GPR



CERTIFIED CORRECT:

Anthony B. Kiedrowski
Registered Land Surveyor

DATE: 3/29/73

TIE SKETCH

(Show at least four ties)

