

PUBLIC LAND SURVEY MONUMENT RECORD

TYPE OF MONUMENT: HARRISON
 ADAMS COUNTY COORDINATES, NAD 83 (2007)

N. 248310.959

E. 562175.023

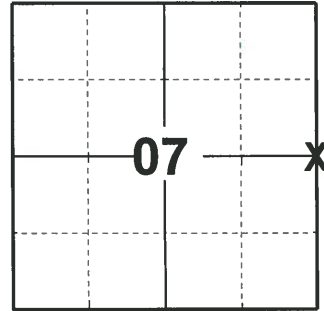
ELEVATION- - - - DATUM - - - -

FIELD WORK DATE: 01/07/2020

BASIS FOR MONUMENT LOCATION

1983 - PLS 1551 SEARCHED AREA, NO SIGNS OF STAKE OR BEARING TREES. HARRISON WAS SET PROPORTIONALLY ON A STRAIGHT LINE BETWEEN ADJACENT SECTION CORNERS. POSITION USED FITS ORIGINAL DISTANCES WITHIN 2.5 FEET.

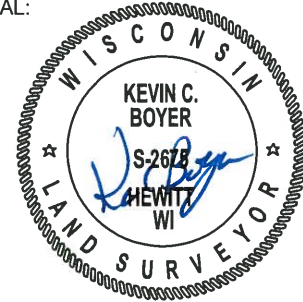
2020 - PLS 2675 FOUND HARRISON FLUSH WITH THE GROUND AND 4 WITNESSES. THE MONUMENT AGREES WITH ALL 4 WITNESSES. ACCEPTED THE HARRISON AS THE CORNER LOCATION. SET 4 NEW TIES AND MEASURED TO THE EXISTING WITNESSES.



LOCATION

(INDICATE CORNER BY "X")

SEAL:

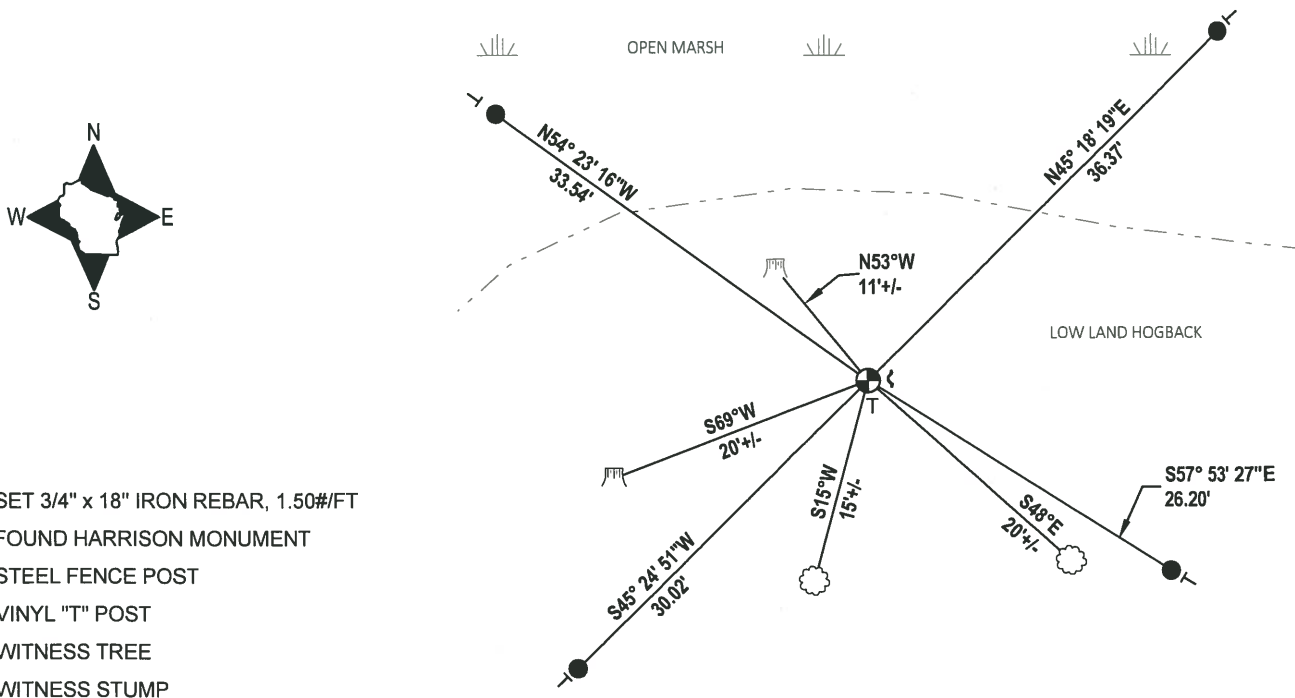


DATA SHOWN HERE ON THIS TIE SHEET IS CORRECT AND COMPLETE TO THE BEST OF MY KNOWLEDGE AND BELIEF.

PROFESSIONAL LAND SURVEYOR

DATE 3/9/2020

TIE SKETCH



- SET 3/4" x 18" IRON REBAR, 1.50#/FT
- ⊕ FOUND HARRISON MONUMENT
- ⌵ STEEL FENCE POST
- ┆ VINYL "T" POST
- ☼ WITNESS TREE
- ⌵ WITNESS STUMP

U.S. PUBLIC LAND SURVEY MONUMENT RECORD

ADAMS COUNTY

TYPE OF MONUMENT: Standard Harrison

STATE PLANE COORDINATES: N _____
E _____

ELEVATION — M.S.L. DATUM: _____

THETA ANGLE: _____

FIELD BOOK: Adams County PAGE 52

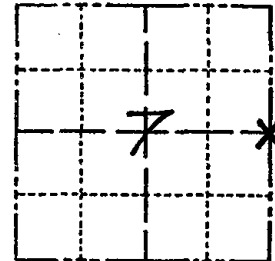
DRAWN BY: D. Riesop

CORNER NO. 35

SECTION 7

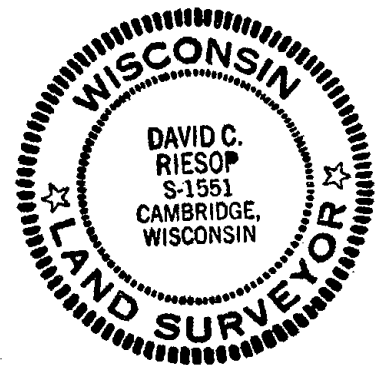
TOWN 18N

RANGE 7E



LOCATION
(Indicated by 'X')

SEAL:



DATA SHOWN HERE ON
CERTIFIED CORRECT:

David C. Riesop
Registered Land Surveyor

DATE: 6/27/83

BASIS FOR MONUMENT LOCATION

Show info such as: History of corner, with reference to Vol. and pg., dates, surveyor; exact description of monument replaced; if location computed, by taped or EDM traverse; landowner remarks, etc. (Use reverse side if necessary) (in conformance with Section A-E 502 of the Wisconsin Administrative Code)

Searched area, no signs of stake or bearing trees.

Corner was reset proportionally on a straight line between adjacent section corners.

Position used fits original distances within 2.5 feet.

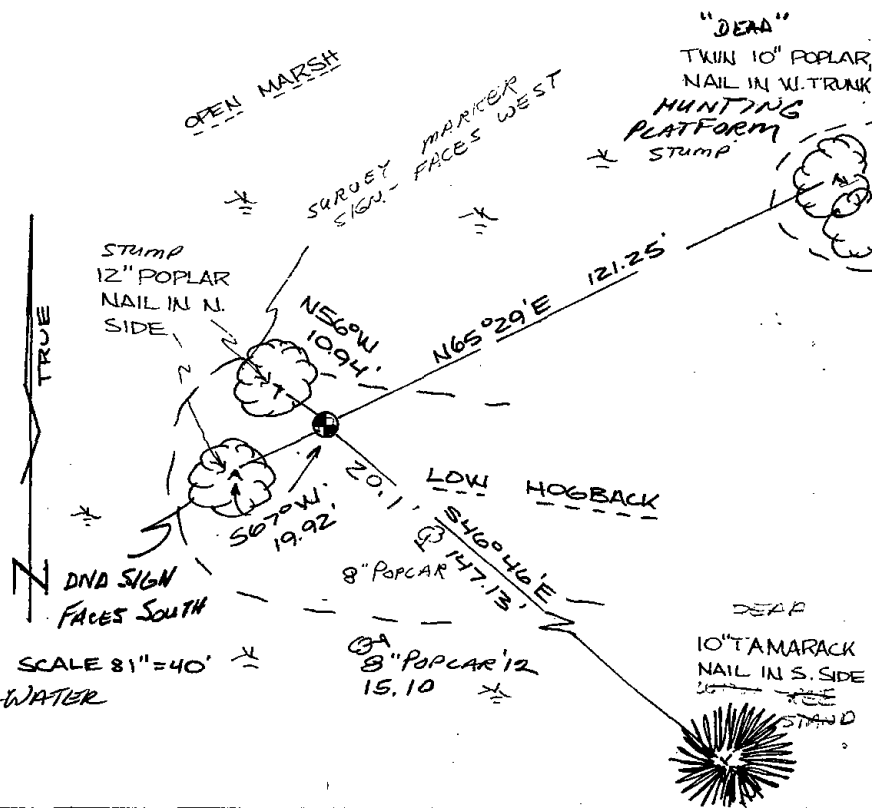
TIE SKETCH

Show at least four ties, also fence lines, roads, topo, size and type of witness trees' and if off road - best way to arrive at corner.

filed for record this 20th day of July 1983 per 59.60 Wisconsin Statutes.
D. Riesop
ADAMS COUNTY SURVEYOR

MAINTENANCE RECORD

Date	Init.	Remarks
10-1-87	SS	1 NEW TIE
6-10-92	JG-BS	ALL OK
1-5-98	SS	OK
1-24-02	JG	OK
10-19-07	JG	COMPLETE AREA UNDER WATER
2-24-12	MS-SS	1 NEW TIE



1950

1951

1952

1953

1954

1955

1956

1957

1958

1959

1960

1961

1962

1963

1964

1965