

08
SECTION

18
TOWN

07
RANGE

ADAMS COUNTY

COUNTY CORNER NO: 36

ROMPORTOL ID: 41807082000

PUBLIC LAND SURVEY MONUMENT RECORD

TYPE OF MONUMENT: 2-3/8" O.D. IRON PIPE

ADAMS COUNTY COORDINATES, NAD 83 (2007)

N. 248249.721

E. 567431.080

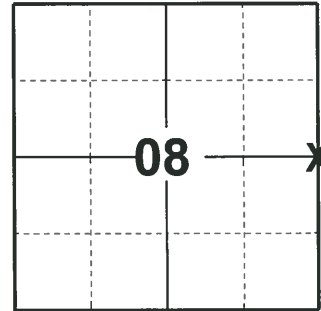
ELEVATION- DATUM

FIELD WORK DATE: 01/08/2020

BASIS FOR MONUMENT LOCATION

1983 - PLS 1551 REMAINS OF BOTH ORIGINAL BEARING TREES WERE FOUND. PROBED CORNER AREA FOR STAKE, BUT NOTHING WAS FOUND. RESET CORNER FROM ORIGINAL TIES. THIS LOCATION FITS ORIGINAL DISTANCE FROM CORNER ESTABLISHED TO NORTH WITHIN 5 FEET.

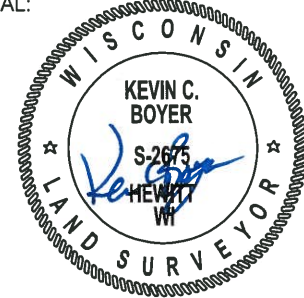
2020 - PLS 2675 FOUND 2-3/8" O.D. IRON PIPE 18"± ABOVE THE ICE AND 3 WITNESS TREES. THE MONUMENT AGREES WITH ALL 3 WITNESS TREES. ACCEPTED THE 2-3/8" O.D. IRON PIPE AD THE CORNER LOCATION. SET 4 NEW TIES AND MEASURED TO THE EXISTING WITNESS TREES.



LOCATION

(INDICATE CORNER BY "X")

SEAL:

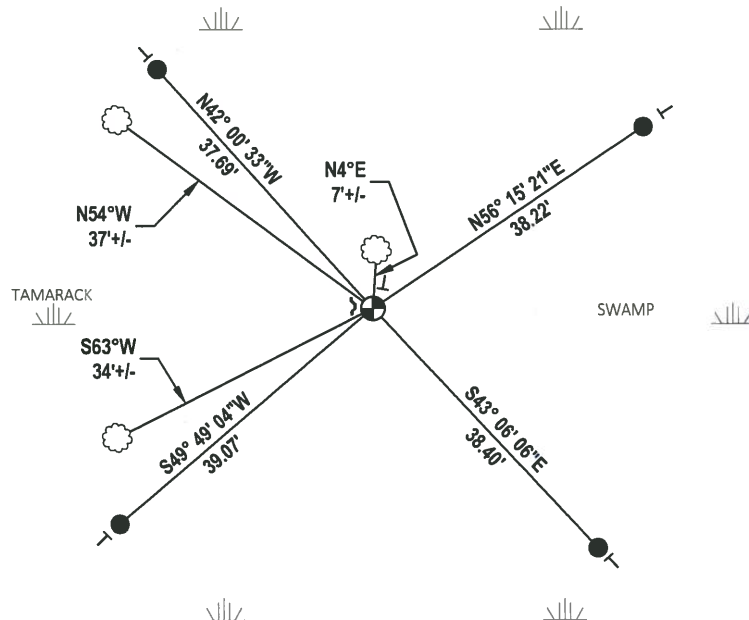


DATA SHOWN HERE ON THIS TIE SHEET IS CORRECT AND COMPLETE TO THE BEST OF MY KNOWLEDGE AND BELIEF.

PROFESSIONAL LAND SURVEYOR

DATE 3/9/2020

TIE SKETCH



- SET 3/4" x 18" IRON REBAR, 1.50#/FT
- ⊕ FOUND 2-3/8" O.D. IRON PIPE
- ~ STEEL FENCE POST
- VINYL "T" POST
- ☼ WITNESS TREE

U.S. PUBLIC LAND SURVEY MONUMENT RECORD

ADAMS COUNTY

TYPE OF MONUMENT: 2" I.D. x 60" galvanized pipe

STATE PLANE COORDINATES: N _____
E _____

ELEVATION — M.S.L. DATUM: _____

THETA ANGLE: _____

FIELD BOOK: Adams County PAGE 51

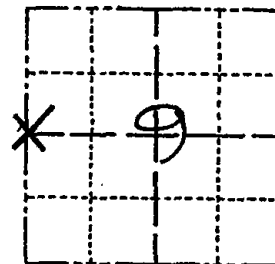
DRAWN BY: D. Riesop

CORNER NO. 36

SECTION 9

TOWN 18N

RANGE 7E



LOCATION
(Indicated by 'X')

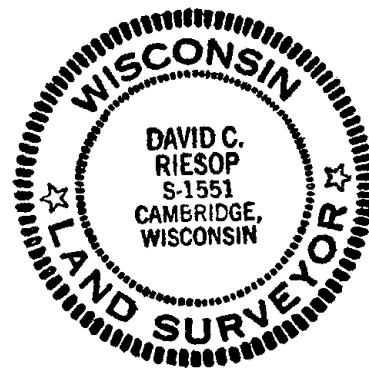
BASIS FOR MONUMENT LOCATION

Show info such as: History of corner, with reference to Vol. and pg., dates, surveyor; exact description of monument replaced; if location computed, by taped or EDM traverse; landowner remarks, etc. (Use reverse side if necessary) (in conformance with Section A-E 502 of the Wisconsin Administrative Code)

Remains of both original bearing trees were found. Probed corner area for stake, but nothing was found. Reset corner from original ties.

This location fits original distance from corner established to North within 5 feet.

SEAL:



DATA SHOWN HERE ON
CERTIFIED CORRECT:

David C. Riesop
Registered Land Surveyor

DATE: 6/24/83

TIE SKETCH

Show at least four ties, also fence lines, roads, topo, size and type of witness trees and if off road - best way to arrive at corner.

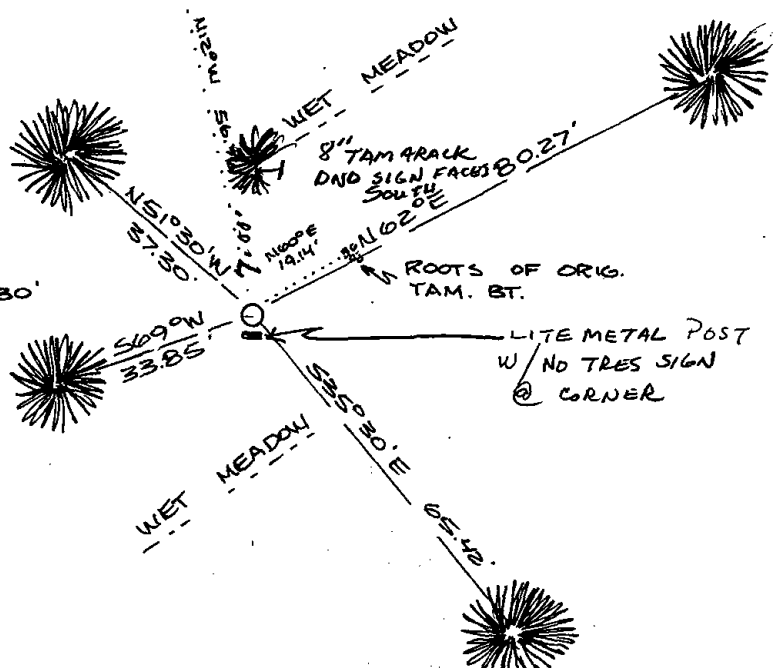
12' DIA. HUMMOCK,
REMAINS OF ORIG.
TAM. BT.

NOTES: TIES SHOWN ARE
TO NAILS IN 8" DIA.
BLAZED TAMARACKS.

filed for record this 20th
day of July 1983
per 59.60 Wisconsin Statutes.
D. Rheinhard
ADAMS COUNTY SURVEYOR



SCALE 8" = 30'



MAINTENANCE RECORD

Date	Init.	Remarks
1-24-02	JG-JS	1-NEW TIE CORNER OK
10-9-07	JG	OK
02-28-12	MS	OK

RECEIVED



Faint, illegible text or markings.