

09  
SECTION

18  
TOWN

07  
RANGE

# ADAMS COUNTY

COUNTY CORNER NO: 37  
ROMPORTOL ID: 41807092000

## PUBLIC LAND SURVEY MONUMENT RECORD

TYPE OF MONUMENT: 3/4" IRON ROD  
ADAMS COUNTY COORDINATES, NAD 83 (2007)

N. 248242.557

E. 572756.347

ELEVATION-      DATUM     

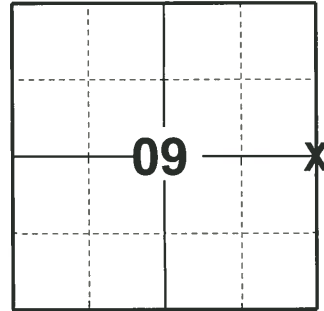
FIELD WORK DATE: 01/08/2020

### BASIS FOR MONUMENT LOCATION

1983 - PLS 1551 SET CORNER ON LINE AND AT PROPORTIONATE DISTANCE BETWEEN THE ADJACENT SECTION CORNERS.

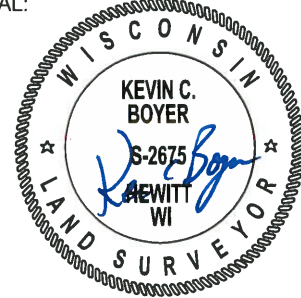
2001 - PLS 2441 DISCOVERED THE 2" I.D. IRON PIPE INTENDING TO MONUMENT THIS CORNER TO BE DISTURBED. PULLED BACK THE TIES PER PLS 1551, WHICH DID NOT MATCH THE PHYSICAL LOCATION EITHER. EXTENDED THE WEST AND SOUTH LINES OF LOT 1 OF CSM 2200 TO THEIR INTERSECTION AND MONUMENTED THIS LOCATION AS THE CORRECT POSITION OF THIS CORNER.

2020 - PLS 2675 FOUND 3/4" IRON ROD 6"± BELOW THE WATER, 1 TIE, AND 1 WITNESS. THE MONUMENT AGREES WITH THE TIE AND WITNESS. ACCEPTED THE 3/4" IRON ROD AS THE CORNER LOCATION. SET 4 NEW TIES AND MEASURED TO THE EXISTING TIE AND WITNESS.



LOCATION  
(INDICATE CORNER BY "X")

SEAL:

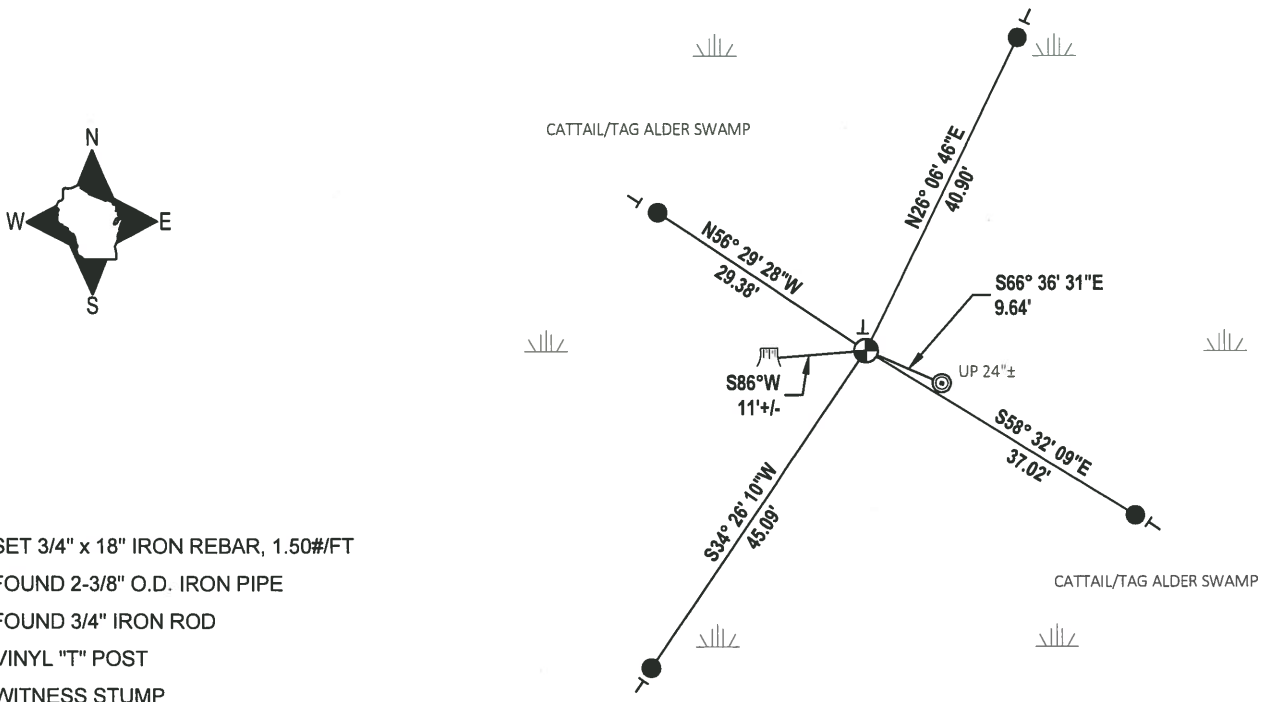


DATA SHOWN HERE ON THIS TIE SHEET IS CORRECT AND COMPLETE TO THE BEST OF MY KNOWLEDGE AND BELIEF.

PROFESSIONAL LAND SURVEYOR

DATE 3/9/2020

### TIE SKETCH



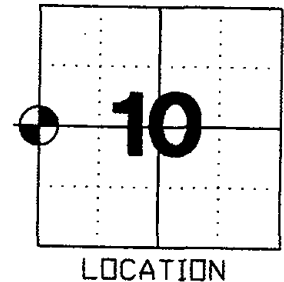
- SET 3/4" x 18" IRON REBAR, 1.50#/FT
- ◎ FOUND 2-3/8" O.D. IRON PIPE
- ⊕ FOUND 3/4" IRON ROD
- └ VINYL "T" POST
- ⌘ WITNESS STUMP

**U.S PUBLIC LAND SURVEY MONUMENT RECORD  
ADAMS COUNTY, WISCONSIN**

CORNER NO. (37)  
SECTION 10  
TOWN 18N  
RANGE 7E

TYPE OF MONUMENT: 3/4" X 24" ROUND IRON ROD

STATE PLANE COORDINATES: N: NOT APPLICABLE  
E: NOT APPLICABLE  
ELEVATION \_ MSL DATUM: NOT APPLICABLE  
THETA ANGLE: NOT APPLICABLE  
FIELD BOOK: 98 PAGE 01  
DRAWN BY: CHRISTOPHER J. RENNER



LOCATION

**BASIS FOR MONUMENT LOCATION**

THIS CORNER WAS SET BY DAVID C. RIESOP ON LINE AND AT PROPORTIONATE DISTANCE BETWEEN THE ADJACENT SECTION CORNERS ON 27 JULY, 1983. WHILE PERFORMING A TRAVERSE AROUND LOT 1 OF ADAMS COUNTY CERTIFIED SURVEY MAP NO. 2200 I DISCOVERED THE 2" I.D. IRON PIPE INTENDING TO MONUMENT THIS CORNER TO BE DISTURBED. I PULLED BACK THE TIES PER DAVID RIESOP, WHICH DID NOT MATCH THE PHYSICAL LOCATION EITHER. I EXTENDED THE WEST AND SOUTH LINES OF LOT 1 OF C.S.M. 2200 TO THEIR INTERSECTION AND MONUMENTED THIS LOCATION AS THE CORRECT POSITION OF THIS CORNER.

**SEAL**

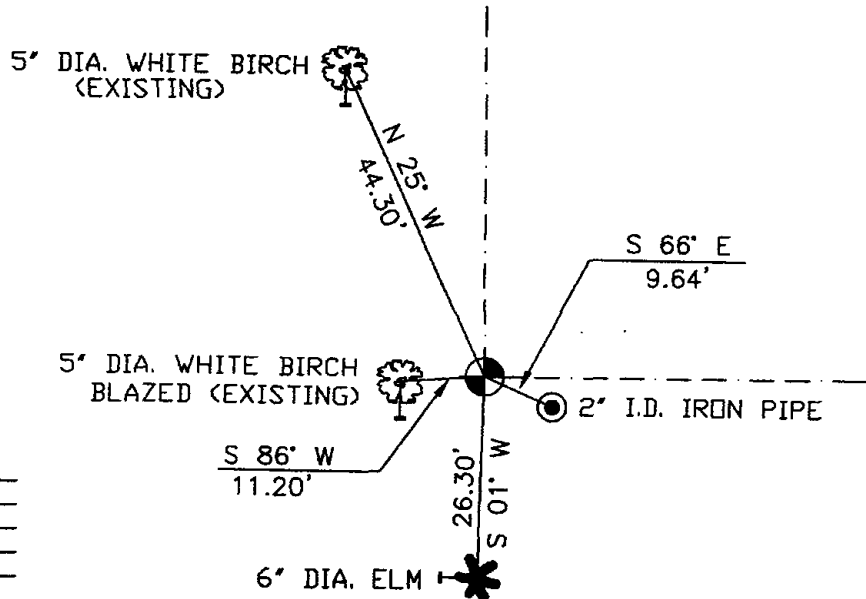


DATA SHOWN HEREON  
CERTIFIED CORRECT:

*Christopher J. Renner*  
REGISTERED LAND SURVEYOR  
DATE: 25 OCTOBER, 2001

**TIE SKETCH**

TIES ARE TO NAILS DRIVEN AT THE  
BASE OF THE TREE.



**MAINTENANCE RECORD**

DATE	INIT.	REMARKS
1-23-02	JG	OK
4-11-07	JG	OK