

07  
SECTION

18  
TOWN

07  
RANGE

# ADAMS COUNTY

COUNTY CORNER NO: 42  
ROMPORTOL ID: 41807070020

## PUBLIC LAND SURVEY MONUMENT RECORD

TYPE OF MONUMENT: HARRISON  
ADAMS COUNTY COORDINATES, NAD 83 (2007)

N. 245603.842

E. 559552.842

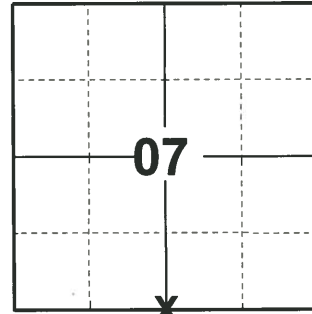
ELEVATION-      DATUM     

FIELD WORK DATE: 01/07/2020

### BASIS FOR MONUMENT LOCATION

1983 - PLS 1551 EXISTING WHITE OAK REPORTED AS BEARING TREE BY OLDER LAND OWNER ACCEPTED AS SUCH EXCAVATED CORNER AREA WITH SHOVEL, BUT NO TRACE OF STAKE WAS FOUND. HARRISON MONUMENT WAS RESET FROM ORIGINAL TIE. CORNER LOCATION SPLITS REMAINS OF OLD ROAD RIGHT OF WAY FENCE NORTH AND SOUTH OF CORNER AND OLD N-S FENCE WIRE WAS FOUND LEADING INTO CORNER. THIS POSITION ALSO AGREES CLOSELY WITH ORIGINAL SECTION MEASUREMENTS FROM THE EAST.

2020 - PLS 2675 FOUND HARRISON MONUMENT FLUSH WITH THE GROUND AND 4 WITNESS TREES. THE MONUMENT AGREES WITH ALL 4 WITNESS TREES. ACCEPTED THE HARRISON AS THE CORNER LOCATION. SET 4 NEW TIES AND MEASURED TO THE EXISTING WITNESS TREES.



**LOCATION**  
(INDICATE CORNER BY "X")

SEAL:



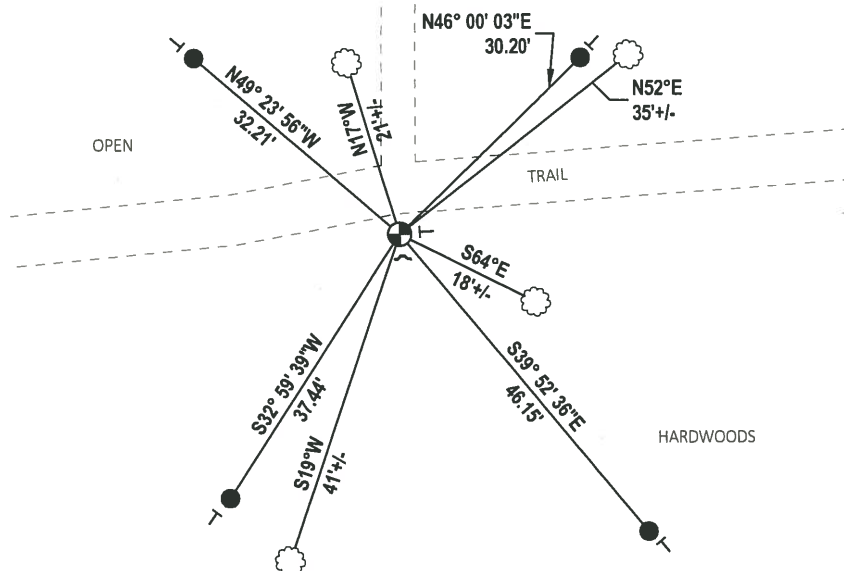
DATA SHOWN HERE ON THIS TIE SHEET IS CORRECT AND COMPLETE TO THE BEST OF MY KNOWLEDGE AND BELIEF.

PROFESSIONAL LAND SURVEYOR

DATE 3/9/2020

### - TIE SKETCH

NOTE: THE CORNER LANDS 2.5± SOUTH OF THE EDGE OF TRAIL.



- SET 3/4" x 18" IRON REBAR, 1.50#/FT
- ⊕ FOUND HARRISON MONUMENT
- ┌ STEEL FENCE POST
- └ VINYL "T" POST
- ⊗ WITNESS TREE

# U.S. PUBLIC LAND SURVEY MONUMENT RECORD

## ADAMS COUNTY

TYPE OF MONUMENT: Standard Harrison

STATE PLANE COORDINATES: N \_\_\_\_\_  
E \_\_\_\_\_

ELEVATION — M.S.L. DATUM: \_\_\_\_\_

THETA ANGLE: \_\_\_\_\_

FIELD BOOK: Adams County PAGE 53

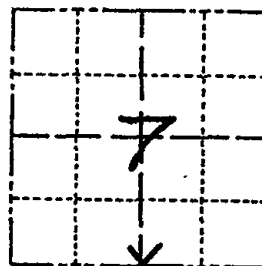
DRAWN BY: D. Riesop

CORNER NO. 42

SECTION 7

TOWN 18N

RANGE 7E



LOCATION  
(Indicated by 'X')



### BASIS FOR MONUMENT LOCATION

Show info such as: History of corner, with reference to Vol. and pg., dates, surveyor; exact description of monument replaced; if location computed, by taped or EDM traverse; landowner remarks, etc. (Use reverse side if necessary) (in conformance with Section A-E 502 of the Wisconsin Administrative Code)

Existing White Oak reported as bearing tree by older land owners accepted as such. Excavated corner area with shovel, but no trace of stake was found. Monument was reset from original tie.

Corner location splits remains of old road right of way fence North and South of corner and old N-S fence wire was found leading into corner.

This position also agrees closely with original section measurements from the East.

filed for record this 20 day of July 1985

per 59.60 Wisconsin Statutes.

D. Riesop  
ADAMS COUNTY SURVEYOR

SEAL:



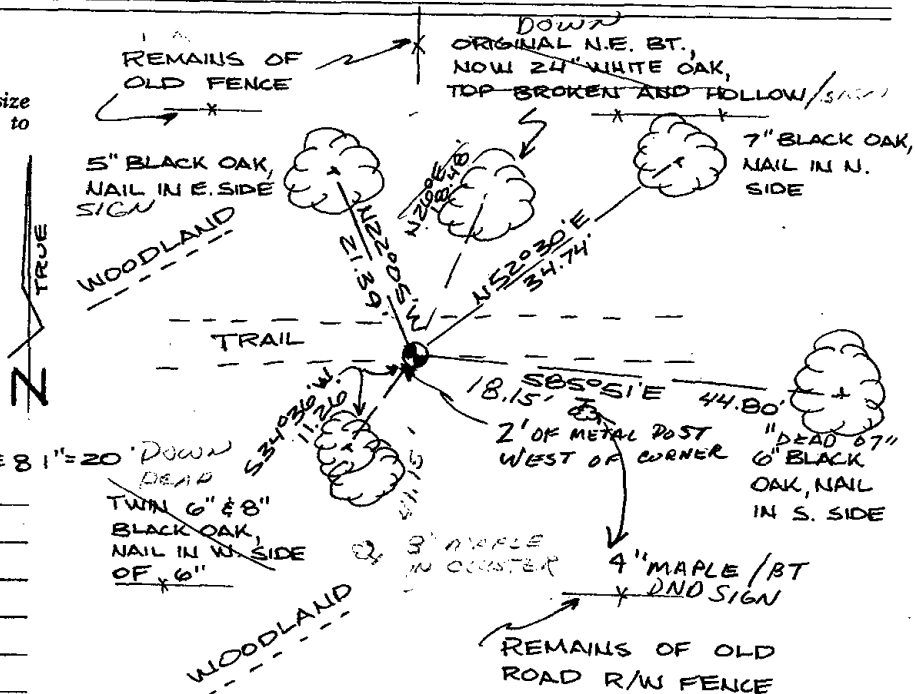
DATA SHOWN HERE ON CERTIFIED CORRECT:

David C. Riesop  
Registered Land Surveyor

DATE: 6/24/83

### TIE SKETCH

Show at least four ties, also fence lines, roads, topo, size and type of witness trees and if off road - best way to arrive at corner.



### MAINTENANCE RECORD

| Date     | Init. | Remarks                |
|----------|-------|------------------------|
| 10-1-87  | SS    | 1 NEW TIE              |
| 6-10-92  | JB-BS | ALL OK                 |
| 10-97    | JG-SS | OK                     |
| 1-25-02  | JG    | OK                     |
| 10-18-07 | JG    | 1-DEAD, 1-NEW, MON. OK |
| 02-24-12 | MS-SS | OK                     |

1950

1950

1950

1950

1950

1950

1950

1950

1950