

## PUBLIC LAND SURVEY MONUMENT RECORD

TYPE OF MONUMENT: HARRISON  
ADAMS COUNTY COORDINATES, NAD 83 (2007)

N. 245616.986

E. 572784.359

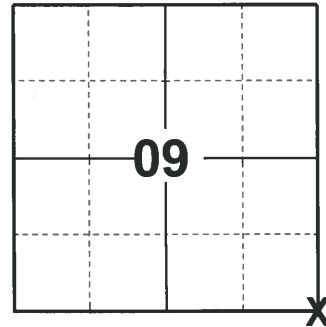
ELEVATION- \_\_\_\_\_ DATUM \_\_\_\_\_

FIELD WORK DATE: 01/09/2020

### BASIS FOR MONUMENT LOCATION

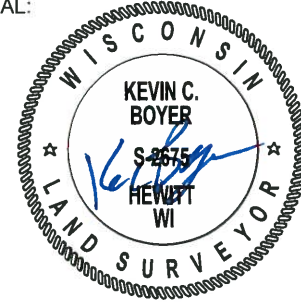
1983 - PLS 1551 EXCAVATED AREA WITH SHOVEL, NO SIGNS OF STAKE OR BTS FOUND. CORNER RESET BY DOUBLING DISTANCE FROM EAST THROUGH 1/4 CORNER AS FOUND BY INDENTATION OF BT. THIS POSITION ALSO SPLITS THE NORTH LINE OF THE NE1/4 OF 16 ON A STONE FOUND AT THE 40 CORNER. NORTH-SOUTH POSITION USED IS RECORD DISTANCE FROM THE SE CORNER OF 16. THIS CHECKS WITHIN 1' OF DISTANCE MEASURED TO CORNER FROM CENTER OF COTTONVILLE LANE IN 1901 BY SMITH (VOL. 1, PG. 129), AND IS ON A STRAIGHT LINE FROM THE N1/4 OF 16 AS FOUND BY BT STUMPS, THROUGH THE ABOVE MENTIONED STONE. THIS LOCATION WILL ALSO AGREE WITH THE N-S POSITION USED BY DENNIS GREEN IN SETTING 40 CORNERS ALONG THE EAST LINE OF 16.

2020 - PLS 2675 FOUND HARRISON FLUSH WITH THE GROUND AND 3 WITNESS TREES. THE MONUMENT AGREES WITH ALL 3 WITNESS TREES. ACCEPTED THE HARRISON AS THE CORNER LOCATION. SET 4 NEW TIES AND MEASURED TO THE EXISTING WITNESS TREES.



LOCATION  
(INDICATE CORNER BY "X")

SEAL:



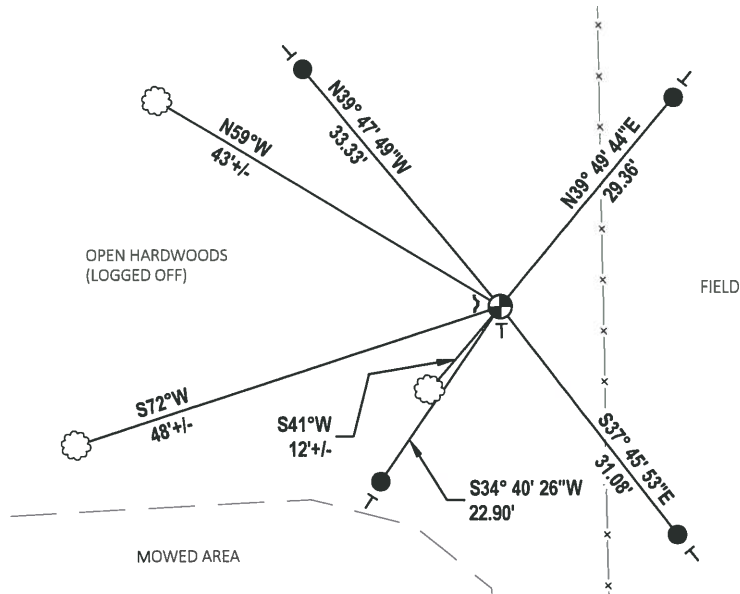
DATA SHOWN HERE ON THIS TIE SHEET IS CORRECT AND COMPLETE TO THE BEST OF MY KNOWLEDGE AND BELIEF.

PROFESSIONAL LAND SURVEYOR

DATE 3/9/2020

### - TIE SKETCH

NOTE: THE CORNER LANDS 11'± WEST OF THE FENCE LINE.



- SET 3/4" x 18" IRON REBAR, 1.50#/FT
- ⊕ FOUND HARRISON MONUMENT
- ┌ STEEL FENCE POST
- └ VINYL "T" POST
- ☁ WITNESS TREE

# U.S. PUBLIC LAND SURVEY MONUMENT RECORD

## ADAMS COUNTY

TYPE OF MONUMENT: Standard Harrison

STATE PLANE COORDINATES: N \_\_\_\_\_  
E \_\_\_\_\_

ELEVATION — M.S.L. DATUM: \_\_\_\_\_

THETA ANGLE: \_\_\_\_\_

FIELD BOOK: Adams County PAGE 54

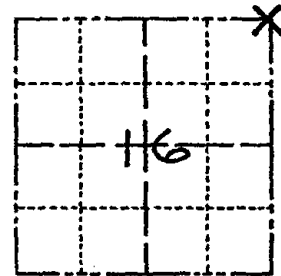
DRAWN BY: D. Riesop

CORNER NO. 47

SECTION 16

TOWN 18N

RANGE 7E



LOCATION  
(Indicated by 'X')

SEAL:



DATA SHOWN HERE ON  
CERTIFIED CORRECT:

*David C. Riesop*  
Registered Land Surveyor

DATE: 6/29/83

### BASIS FOR MONUMENT LOCATION

Show info such as: History of corner, with reference to Vol. and pg., dates, surveyor; exact description of monument replaced; if location computed, by taped or EDM traverse; landowner remarks, etc. (Use reverse side if necessary) (in conformance with Section A-E 502 of the Wisconsin Administrative Code)

Excavated area with shovel, no signs of stake or BTs found.

Corner reset by doubling distance from East through 1/4 corner as found by indentation of BT. This position also splits the North line of the NE 1/4 of 16 on a stone found at the 40 corner.

North - South position used is record distance from the SE corner of 16. This checks within 1' of distance measured to corner from center of Cottonville Lane in 1901 by Smith (Vol. 1, Page 129), and is on a straight line from the N 1/4 of 16 as found by BT stumps, through the above mentioned stone.

This location will also agree with the N-S position used by Dennis Green in setting 40 corners along the East line of Section 16.

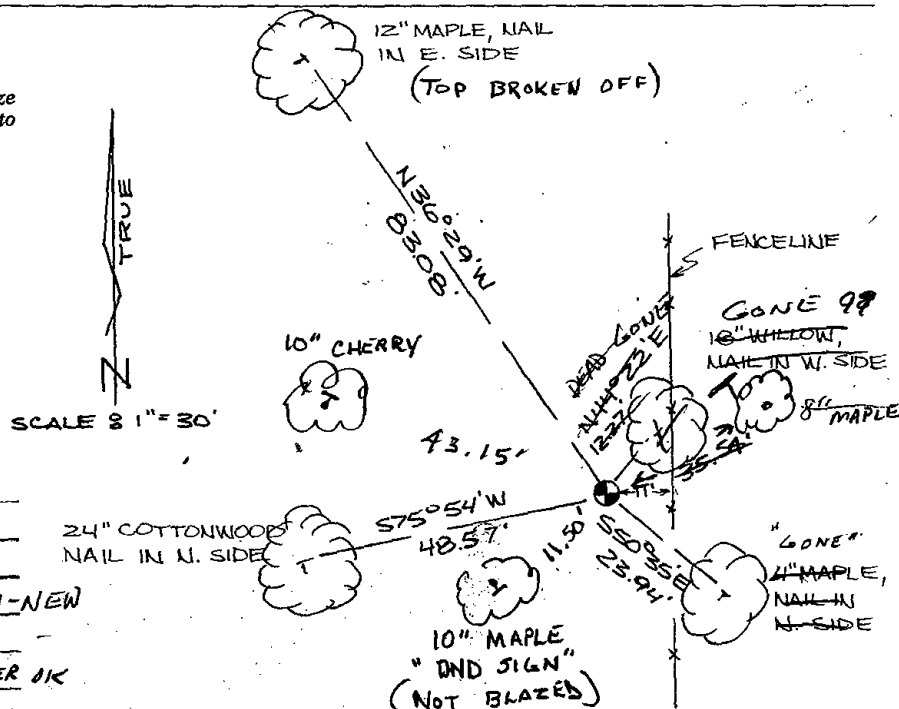
### TIE SKETCH

Show at least four ties, also fence lines, roads, topo, size and type of witness trees' and if off road - best way to arrive at corner.

filed for record this 20th

day of July 1983  
per 59.60 Wisconsin Statutes.

*D. Riesop*  
ADAMS COUNTY SURVEYOR



### MAINTENANCE RECORD

Date	Init.	Remarks
3-9-87	GL	OK
6-8-92	JG-BS	1-DEAD STILL STANDING, 1-NEW
1-5-98	JG	1-GONE 3-REMAIN
1-22-02	JG	2-GONE, 2-NEW, CORNER OK
4-11-07	JG	1-GONE, 4-LEFT



The following information is provided for your reference:

1. The first item listed is a book titled 'The History of the County of...' published in 1850. It contains a detailed account of the early settlement and development of the region.

2. The second item is a collection of letters from prominent local figures, including [Name], dated between 1820 and 1840. These letters provide valuable insights into the social and economic conditions of the time.

3. A third entry is a manuscript by [Name], which discusses the agricultural practices and land management techniques used by early settlers in the area.

4. Finally, there is a set of maps showing the geographical layout of the county and its various settlements and roads.