

11
SECTION

18
TOWN

07
RANGE

ADAMS COUNTY

COUNTY CORNER NO: 50

ROMPORTOL ID: 41807110020

PUBLIC LAND SURVEY MONUMENT RECORD

TYPE OF MONUMENT: HARRISON (BROKEN-TOP)

ADAMS COUNTY COORDINATES, NAD 83 (2007)

N. 245638.644

E. 580703.455

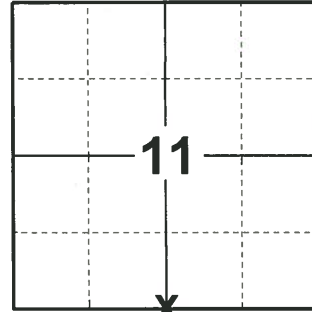
ELEVATION- - - - DATUM - - - -

FIELD WORK DATE: 01/09/2020

BASIS FOR MONUMENT LOCATION

1981 - PLS 878 NO RECORD OF RESURVEYS. NO EVIDENCE OF ANY PREVIOUS MONUMENT. CORNER IS SET ON A STRAIGHT LINE AND EQUIDISTANT BETWEEN SECTION CORNERS. THIS LOCATION FITS SURVEY BY GROTHMAN IN THE SE1/4 SE1/4 SECTION 11.

2020 - PLS 2675 FOUND HARRISON (BROKEN-TOP) 18"± BELOW THE WATER SURFACE AND 4 TIES. THE MONUMENT AGREES WITH ALL 4 TIES. ACCEPTED THE HARRISON (BROKEN-TOP) AS THE CORNER LOCATION AND MEASURED TO THE EXISTING TIES.



LOCATION

(INDICATE CORNER BY "X")

SEAL:

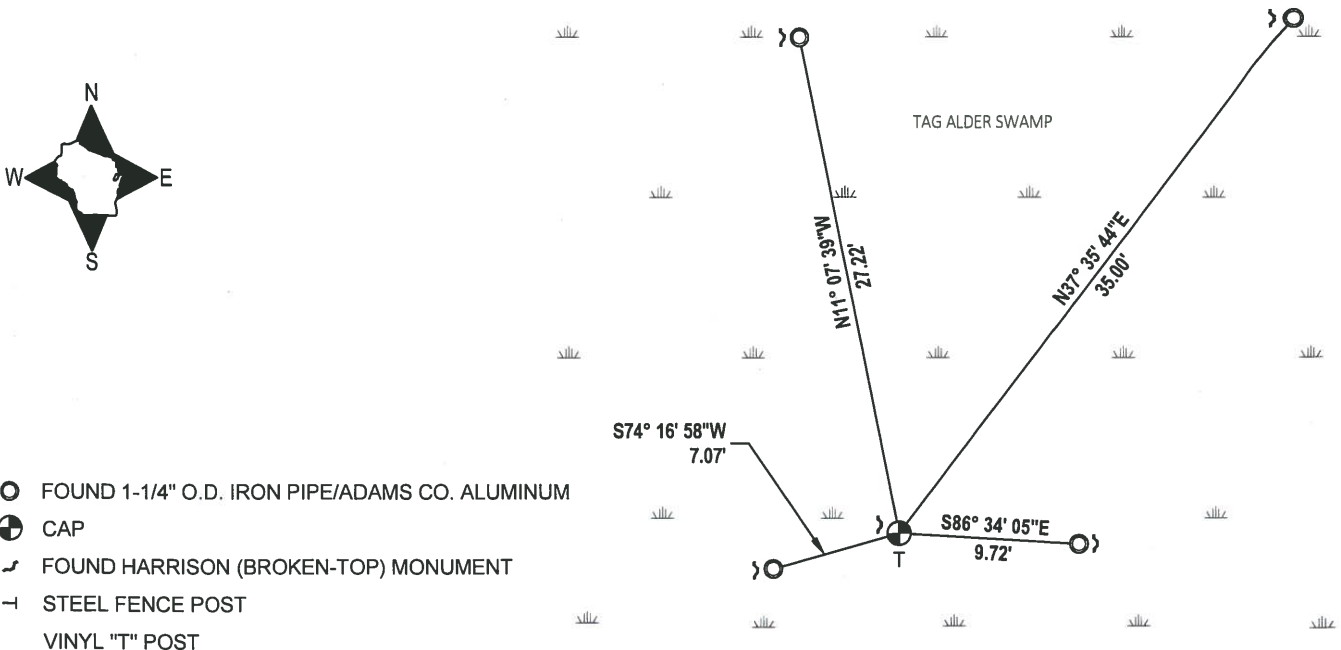


DATA SHOWN HERE ON THIS TIE SHEET IS CORRECT AND COMPLETE TO THE BEST OF MY KNOWLEDGE AND BELIEF.

PROFESSIONAL LAND SURVEYOR

DATE 3/9/2020

- TIE SKETCH

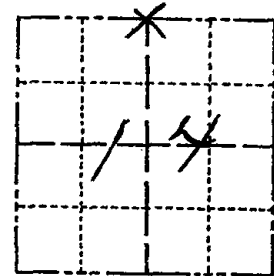


- FOUND 1-1/4" O.D. IRON PIPE/ADAMS CO. ALUMINUM
- ⊕ CAP
- ~ FOUND HARRISON (BROKEN-TOP) MONUMENT
- STEEL FENCE POST
- VINYL "T" POST

Government Land Corner Certificate

ADAMS County
 TYPE OF MONUMENT: HARRISON
 STATE PLANE COORDINATES: N _____
 E _____
 ELEVATION — M.S.L. DATUM: _____
 THETA ANGLE: _____
 FIELD BOOK: 88 PAGE 33
 DRAWN BY: N.J.

CORNER NO. 50
 SECTION 14
 TOWN 18
 RANGE 7



LOCATION
(Indicated by 'X')

BASIS FOR MONUMENT LOCATION

Show info such as: History of corner, with reference to Vol. and pg., dates, surveyor; exact description of monument replaced; if location computed, by taped or EDM traverse; landowner remarks, etc. (Use reverse side if necessary)

No record of resurveys. No evidence of any previous monument. Corner is set on a straight line and equidistant between section corners. This location fits survey by Grothman in the SE $\frac{1}{4}$ SE $\frac{1}{4}$ section 11.

SEAL:



DATA SHOWN HERE ON
CERTIFIED CORRECT:

Anthony B. Kiedrowski
Registered Land Surveyor

DATE: 8/31/81

TIE SKETCH

Show at least four ties, also fence lines, roads, topo, size and type of witness trees' and if off road - best way to arrive at corner.

- ⊗ 4 1"x24" IP & WITNESS CAPS SET FOR TIES

