

11  
SECTION

18  
TOWN

07  
RANGE

# ADAMS COUNTY

COUNTY CORNER NO: 51

ROMPORTOL ID: 41807110000

## PUBLIC LAND SURVEY MONUMENT RECORD

TYPE OF MONUMENT: RAILROAD SPIKE  
ADAMS COUNTY COORDINATES, NAD 83 (2007)

N. 245667.523

E. 583368.959

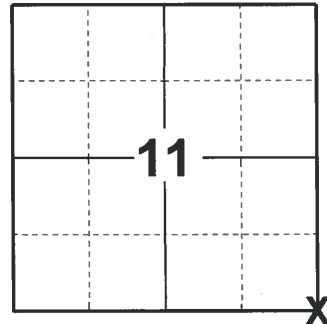
ELEVATION- - - - DATUM - - - -

FIELD WORK DATE: 02/04/2020

### BASIS FOR MONUMENT LOCATION

1973 - PLS 878 SET HARRISON MONUMENT BY TRAVERSE OF THE ENTIRE SECTION, COMPARING POSSESSION LINES AND ORIGINAL NOTES. DID NOT DIG BECAUSE OF DEEP FILL IN ROAD.

2020 - PLS 2675 FOUND MAGNAIL IN THE ROAD SURFACE, REMOVED, FOUND RAILROAD SPIKE 10" BELOW, AND 1 WITNESS. REMOVED RAILROAD SPIKE AND FOUND NO OTHER EVIDENCE OF ANY ADDITIONAL MONUMENT BELOW. THE RAILROAD SPIKE LOCATION AGREES WITH THE EXISTING WITNESS. ACCEPTED THE RAILROAD SPIKE AS THE CORNER LOCATION. RE-SET THE RAILROAD SPIKE IN THE FOUND LOCATION, SET 3 NEW TIES, MEASURED TO A FOUND PROPERTY IRON AND THE WITNESS.



LOCATION

(INDICATE CORNER BY "X")

SEAL:



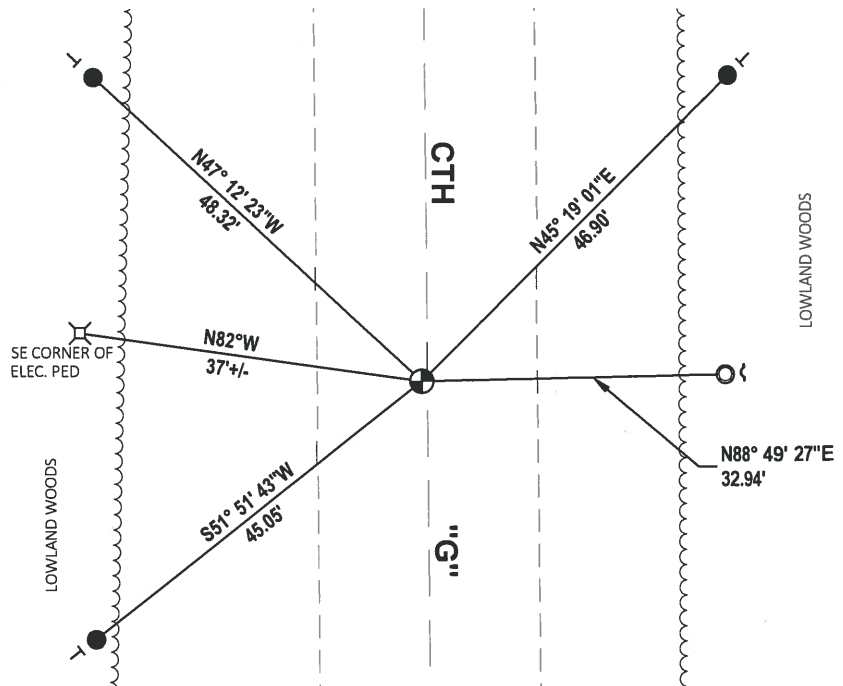
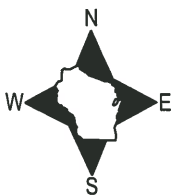
DATA SHOWN HERE ON THIS TIE SHEET IS CORRECT AND COMPLETE TO THE BEST OF MY KNOWLEDGE AND BELIEF.

PROFESSIONAL LAND SURVEYOR

DATE 3/9/2020

### - TIE SKETCH

NOTE: THE CORNER LANDS 0.5'± WEST OF CENTERLINE OF CTH "G".



- SET 3/4" x 18" IRON REBAR, 1.50#/FT
- FOUND 1-1/4" O.D. IRON PIPE
- ⊕ FOUND RAILROAD SPIKE
- ~ STEEL FENCE POST
- VINYL "T" POST

# ADAMS COUNTY

## Survey Monument Record

TYPE OF MONUMENT: Harrison std.

STATE PLANE COORDINATES: N \_\_\_\_\_

E \_\_\_\_\_

ELEVATION — M.S.L. DATUM: \_\_\_\_\_

THETA ANGLE: \_\_\_\_\_

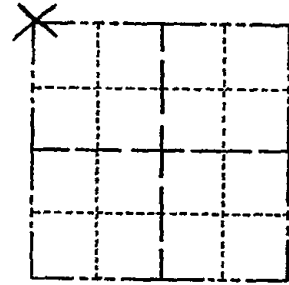
FIELD BOOK: 108 PAGE 11

CORNER NO. 267

SECTION 13

TOWN 18

RANGE 7



LOCATION  
(Indicated by 'X')

SEAL:



### BASIS FOR MONUMENT LOCATION

(Use reverse side if necessary)

Show info such as: History of corner, with reference to Vol. and pg, dates, surveyor; exact description of monument replaced; if location computed, by taped or EDM traverse; landowner remarks, etc.

Set by traverse of the entire section, comparing possession lines and original notes. Did not dig because of deep fill in road.

|                   |      |          |                            |
|-------------------|------|----------|----------------------------|
| CORNER            | O.K. | 3-28-77  | GR-SS                      |
| "                 | "    | 5-17-82  | PK-SS                      |
| "                 | "    | 2-23-87  | SS                         |
| "                 | "    | 11-26-91 | KZ-SS                      |
| "                 | "    | 2-18-97  | JG-SS                      |
| "                 | "    | 1-21-02  | JG (FD MAG NAIL AT CORNER) |
| OK, 4-06-07 - CPR |      |          |                            |

CERTIFIED CORRECT:

*Anthony B. Kiedrowski*  
Registered Land Surveyor

DATE: 4/11/73

### TIE SKETCH

(Show at least four ties)

Ties to nail and disc.

