

12
SECTION

18
TOWN

07
RANGE

ADAMS COUNTY

COUNTY CORNER NO: 52

ROMPORTOL ID: 41807120020

PUBLIC LAND SURVEY MONUMENT RECORD

TYPE OF MONUMENT: HARRISON

ADAMS COUNTY COORDINATES, NAD 83 (2007)

N. 245728.617

E. 586028.385

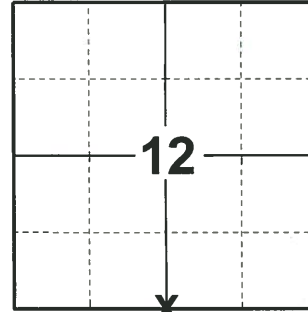
ELEVATION- - - - DATUM - - - -

FIELD WORK DATE: 01/07/2020

BASIS FOR MONUMENT LOCATION

1973 - PLS 878 EXCAVATED AREA OF FENCE CORNER AND FOUND STONE. LOWERED STONE AND SET HARRISON MONUMENT ON TOP.

2020 - PLS 2675 FOUND HARRISON MONUMENT 8"± BELOW THE GROUND AND 3 WITNESS TREES. THE MONUMENT AGREES WITH ALL 3 WITNESS TREES. ACCEPTED THE HARRISON AS THE CORNER LOCATION. SET 4 NEW TIES AND MEASURED TO THE EXISTING WITNESS TREES.



LOCATION

(INDICATE CORNER BY "X")

SEAL:

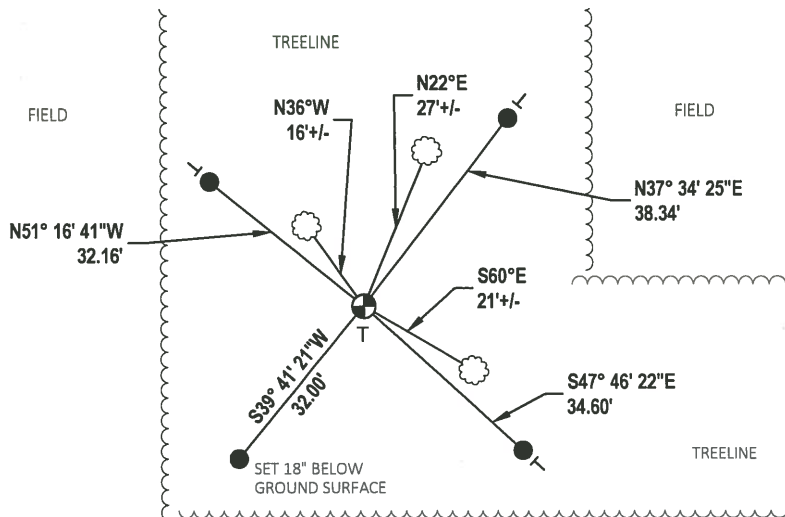


DATA SHOWN HERE ON THIS TIE SHEET IS CORRECT AND COMPLETE TO THE BEST OF MY KNOWLEDGE AND BELIEF.

PROFESSIONAL LAND SURVEYOR

DATE 3/9/2020

- TIE SKETCH



- SET 3/4" x 18" IRON REBAR, 1.50#/FT
- ⊕ FOUND HARRISON MONUMENT
- VINYL "T" POST
- ☁ WITNESS TREE

FIELD

FIELD

ADAMS COUNTY

Survey Monument Record

TYPE OF MONUMENT: Harrison Std.

STATE PLANE COORDINATES: N _____

E _____

ELEVATION -- M.S.L. DATUM: _____

THETA ANGLE: _____

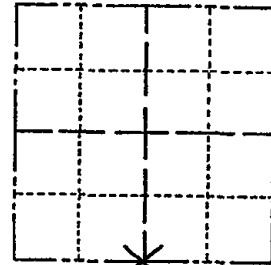
FIELD BOOK: 108 PAGE 14

CORNER NO. 254 52

SECTION 12

TOWN 18

RANGE 7



LOCATION
(Indicated by 'X')

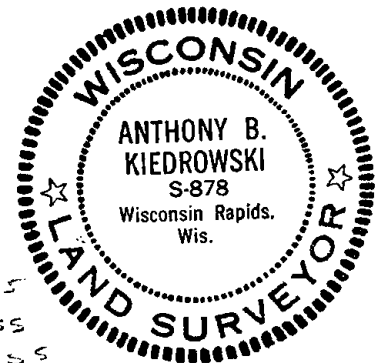
SEAL:

BASIS FOR MONUMENT LOCATION

(Use reverse side if necessary)

Show info such as: History of corner, with reference to Vol. and pg, dates, surveyor; exact description of monument replaced; if location computed, by taped or EDM traverse; landowner remarks, etc.

Excavated area of fence corner and found stone. See picture attached. Stone lowered and harrison set on top.



CORNER O.K. 3-14-77 GR-SS
 " " 5-1-82 1-1-85
 " " 3-9-87 - GR-SS
 " " 11-26-91 KZ-SS
 1-2-98 ONLY 2 TIES
 REMAIN - STUMPS, ETC. CERTIFIED CORRECT:
 FILED OVER CORNER
 NEEDS SIGNIFICANT
 WORK TO RE-LOCATE

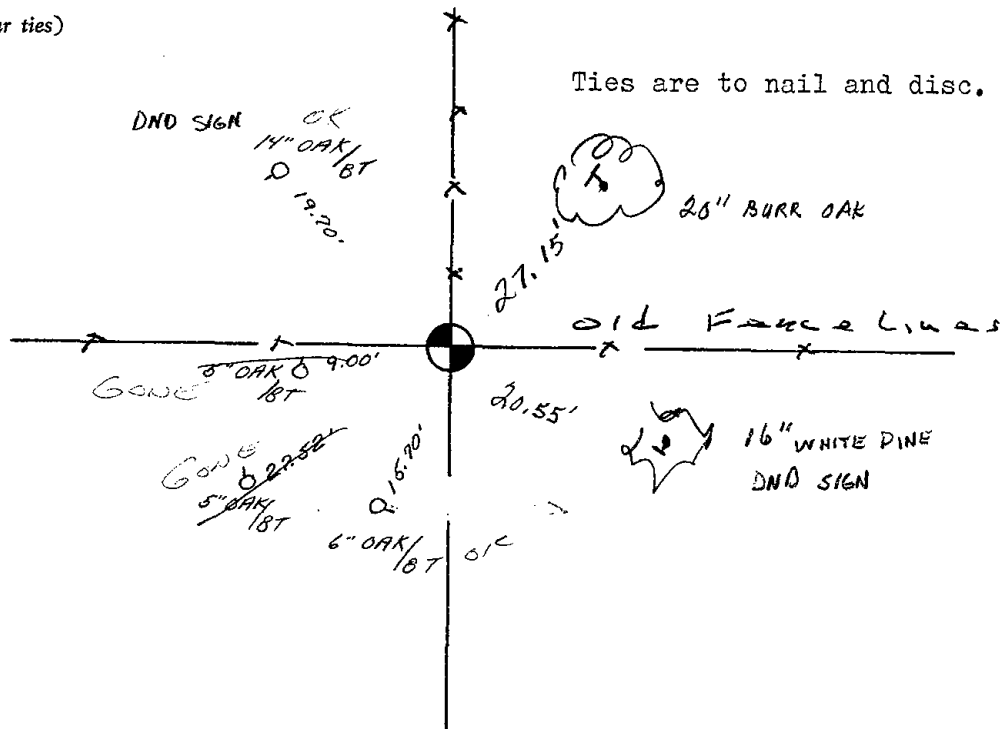
Anthony B. Kiedrowski
 Registered Land Surveyor

DATE: Apr 21 - '73

2-NEW TIES, CORNER OK 1-21-02 JG

TIE SKETCH

(Show at least four ties)



Ties are to nail and disc.