

18
SECTION

18
TOWN

07
RANGE

ADAMS COUNTY

COUNTY CORNER NO: 55

ROMPORTOL ID: 41807182000

PUBLIC LAND SURVEY MONUMENT RECORD

TYPE OF MONUMENT: HARRISON
ADAMS COUNTY COORDINATES, NAD 83 (2007)

N. 243067.972

E. 562189.424

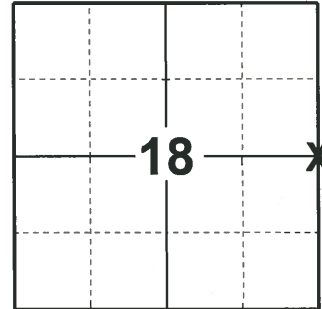
ELEVATION- DATUM

FIELD WORK DATE: 01/10/2020

BASIS FOR MONUMENT LOCATION

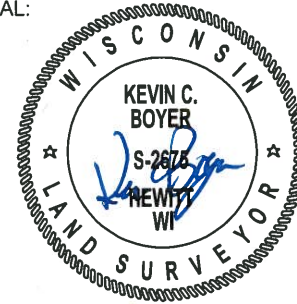
1978 - PLS 1184 USING EDM TRAVERSE BEGINNING AT THE SE AND SW CORNERS OF SECTION 16, SET BY KIEDROWSKI, AND FOLLOWING THE ORIGINAL SECTION MEASUREMENTS, AS RECORDED IN VOL. 8, PG. 6 OF 1901 AND 1925 SURVEY NOTES LOCATED THE WEST 1/4 POST OF SECTION 17 AND SET A MONUMENT AT THE BASE OF POST.

2020 - PLS 2675 FOUND HARRISON MONUMENT FLUSH WITH THE MARSH SURFACE AND 1 WITNESS TREE. THE MONUMENT AGREES WITH THE WITNESS TREE. ACCEPTED THE HARRISON MONUMENT AS THE CORNER LOCATION. SET 4 NEW TIES AND MEASURED TO THE EXISTING WITNESS TREE.



LOCATION
(INDICATE CORNER BY "X")

SEAL:

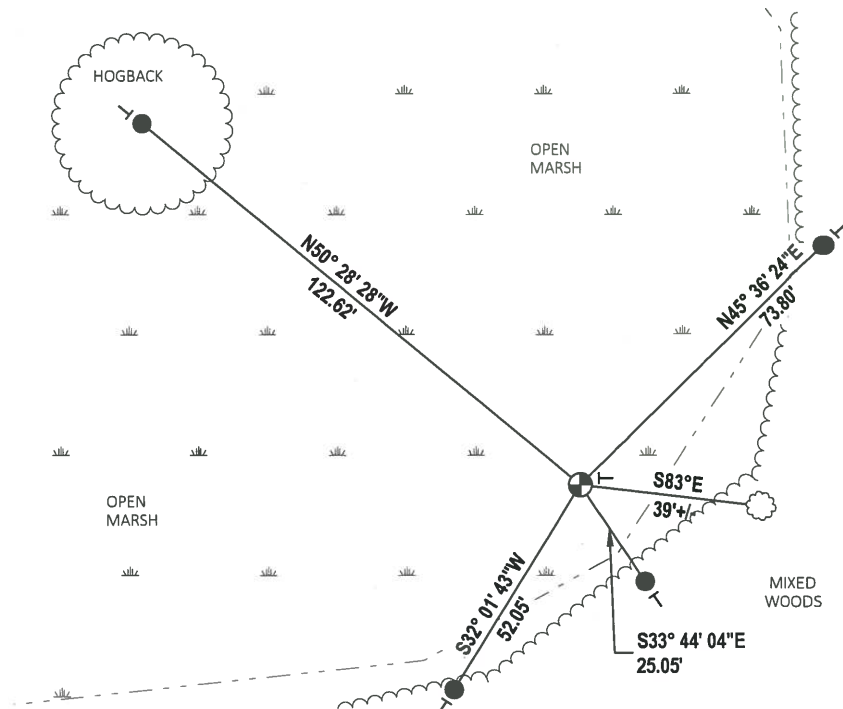


DATA SHOWN HERE ON THIS TIE SHEET IS CORRECT AND COMPLETE TO THE BEST OF MY KNOWLEDGE AND BELIEF.

PROFESSIONAL LAND SURVEYOR

DATE 3/9/2020

- TIE SKETCH



- SET 3/4" x 18" IRON REBAR, 1.50#/FT
- ⊙ FOUND HARRISON MONUMENT
- ⊢ VINYL "T" POST
- ⊙ WITNESS TREE

Government Land Corner Certificate

ADAMS

County

TYPE OF MONUMENT: Harrison Std.

STATE PLANE COORDINATES: N _____
E _____

ELEVATION — M.S.L. DATUM: _____

THETA ANGLE: _____

FIELD BOOK: _____ PAGE _____

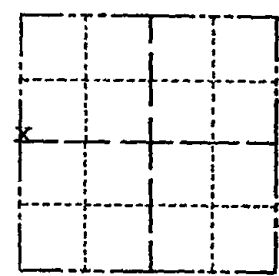
DRAWN BY: _____

CORNER NO. 55

SECTION 17

TOWN T. 18 N.

RANGE R. 7 E.



LOCATION
(Indicated by 'X')

BASIS FOR MONUMENT LOCATION

Show info such as: History of corner, with reference to Vol. and pg., dates, surveyor; exact description of monument replaced; if location computed, by taped or EDM traverse; landowner remarks, etc. (Use reverse side if necessary)

Using an E.D.M. traverse beginning at the SE and SW corners of Section 16, set by Kiedrowski, and following the original section measurements, as recorded in Vol. 8, Page 18 and Vol. 3, Page 6 of 1901 and 1925 survey notes we located the West $\frac{1}{4}$ post of Section 17 and set a monument at the base of post.

SEAL:



DATA SHOWN HERE ON
CERTIFIED CORRECT:

Dennis M. Green
Registered Land Surveyor

DATE: Sept. 15, 1978

TIE SKETCH

Show at least four ties, also fence lines, roads, topo, size and type of witness trees' and if off road - best way to arrive at corner.

CORNER IS 200'± N. OF OLD TRAIL ON OAK RIDGE - TRAIL LEADS TO OLD YELLOW PANEL TRUCK ON RIDGE 400'± WEST OF WHERE N-S FENCE CROSSES TRAIL.

'98 Fd. 1" x 60" IRON PIPE @ FENCE POST 3' WEST - PLACED SAME 1MM. N. of HARRISON
"PUT DND SIGN ON PIPE 07"

MAINTENANCE RECORD

Date	Init.	Remarks
11-1-87	SS	3 NEW TIES
1-2-98	SS	1 NEW TIE
1-24-02	JG-JS	1-GONE, 1-NEW, CORNER OK
10-11-07	JG	OK
03-07-12	SS	1 NEW TIE

