

17  
SECTION

18  
TOWN

07  
RANGE

# ADAMS COUNTY

COUNTY CORNER NO: 56

ROMPORTOL ID: 41807172000

## PUBLIC LAND SURVEY MONUMENT RECORD

TYPE OF MONUMENT: HARRISON  
ADAMS COUNTY COORDINATES, NAD 83 (2007)

N. 242913.584

E. 567450.323

ELEVATION-      DATUM     

FIELD WORK DATE: 01/10/2020

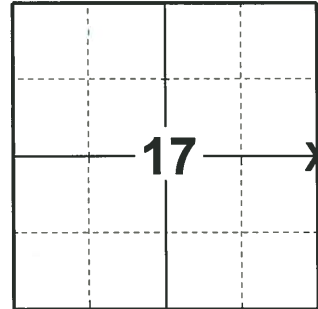
### BASIS FOR MONUMENT LOCATION

1977 - PLS 1245 RAN EDM TRAVERSE AROUND SECTION 16 AND TIED IN ALL EXISTING EVIDENCE. SET WEST 1/4 CORNER ON STRAIGHT LINE IN PROPORTION TO ORIGINAL TIES.

1978 - PLS 1184 USING EDM TRAVERSE BEGINNING AT THE SE AND SW CORNERS OF SECTION 16, SET BY A. KIEDROWSKI, AND FOLLOWING THE ORIGINAL SECTION MEASUREMENTS, AS RECORDED IN VOL. 8, PG. 18 AND VOL. 3, PG. 6 OF 1901 AND 1925 SURVEY NOTES LOCATED THE WEST 1/4 POST OF SECTION 17 AND SET A MONUMENT AT THE BASE OF POST. THEN CALCULATED THE LOCATION OF AND SET THE W 1/4 OF SECTION 16.

2011 - PLS 2663 FOUND HARRISON MONUMENT BROKEN AND ON TOP OF GROUND AND ONLY ONE WITNESS MONUMENT. SET HARRISON MONUMENT USING EXISTING WITNESS MONUMENT AND SECTION SUMMARY BY PLS 1551 DATED 6-29-83.

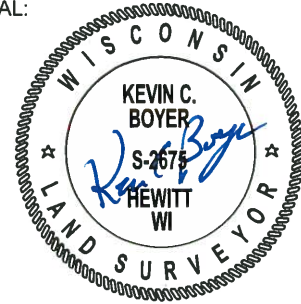
2020 - PLS 2675 FOUND HARRISON MONUMENT FLUSH WITH THE GROUND SURFACE AND 4 TIES. THE MONUMENT AGREES WITH ALL 4 TIES. ACCEPTED THE HARRISON AS THE CORNER LOCATION. MEASURED TO THE EXISTING TIES.



### LOCATION

(INDICATE CORNER BY "X")

SEAL:



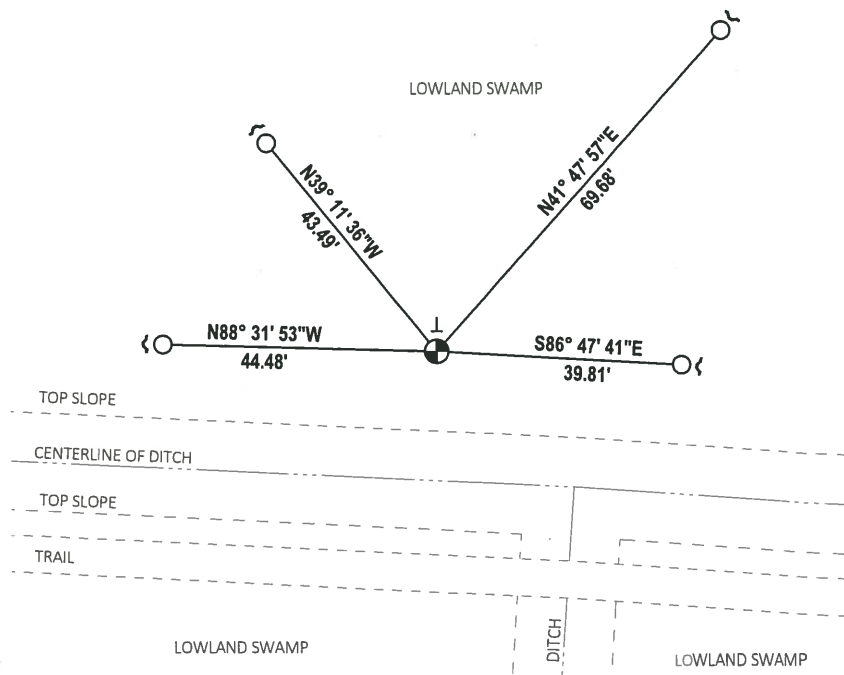
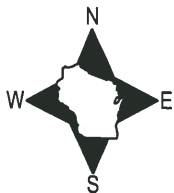
DATA SHOWN HERE ON THIS TIE SHEET IS CORRECT AND COMPLETE TO THE BEST OF MY KNOWLEDGE AND BELIEF.

PROFESSIONAL LAND SURVEYOR

DATE 3/9/2020

### TIE SKETCH

NOTE: THE CORNER LANDS 36± NORTH OF THE TRAIL.



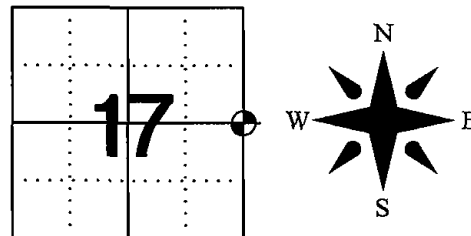
- FOUND 3/4" IRON ROD
- ⊕ FOUND HARRISON MONUMENT
- ┌ STEEL FENCE POST
- └ VINYL "T" POST

**U.S. PUBLIC LAND SURVEY MONUMENT RECORD  
ADAMS COUNTY, WISCONSIN**

CORNER NO. 56  
CORNER NO. 41807172000

IN ACCORDANCE WITH WISCONSIN ADMINISTRATIVE CODE, CHAPTER A-E 7.08 (3) (A)-(I)

**LOCATION:** CHAPTER A-E 7.08 (3): (A)  
SECTION 17 TOWNSHIP 18 NORTH RANGE 7 EAST  
TOWN OF: RICHFIELD  
TYPE OF CORNER: EAST QUARTER CORNER  
TYPE OF MONUMENT: HARRISON CAST IRON MONUMENT  
HORIZONTAL DATUM: NAD 83-91 GRID  
ADAMS COUNTY COORDINATES:  
NORTHING: 242913.649  
EASTING: 567450.325



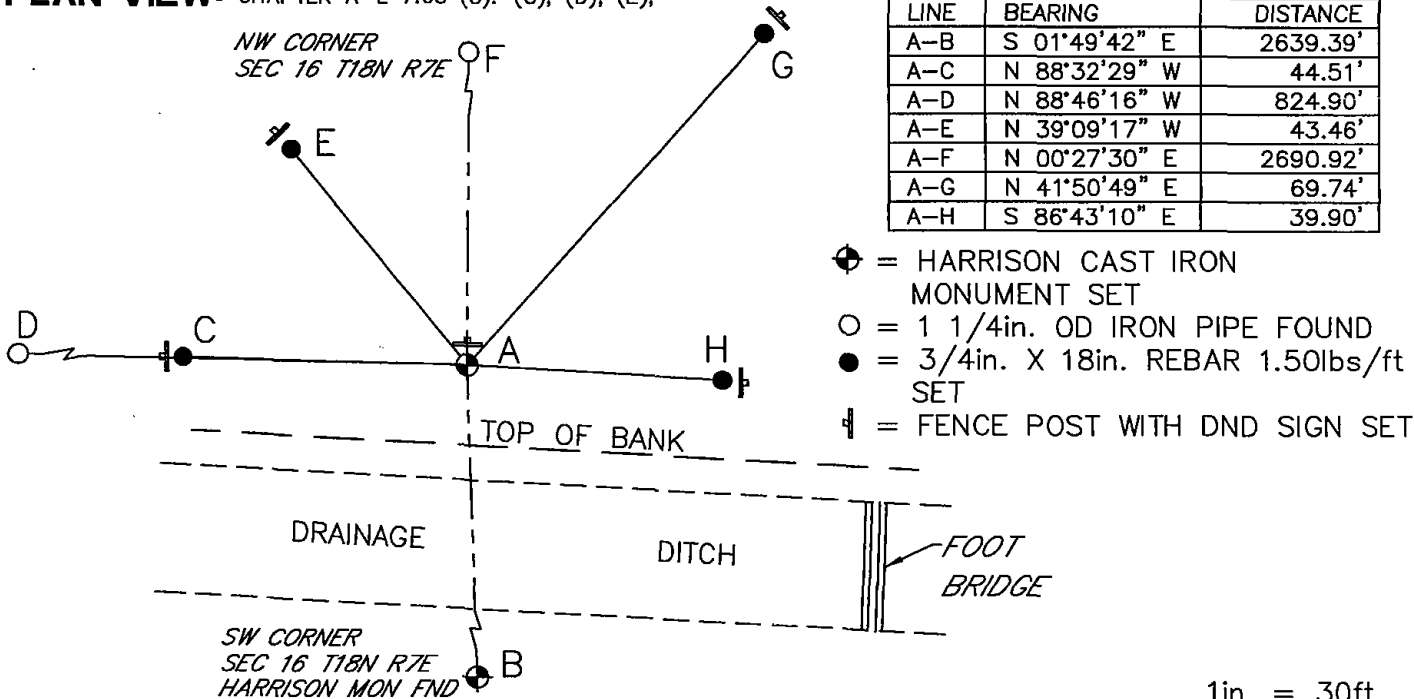
**RECOVERY PROCEDURES:** CHAPTER A-E 7.08 (3): (B), (F), (G), (H)

15 SEPT. 1978 RLS 1184; USING AN E.D.M. TRAVERSE BEGINNING AT THE SE AND SW CORNERS OF SECTION 16, SET BY KIEDROWSKI, AND FOLLOWING THE ORIGINAL SECTION MEASUREMENTS, AS RECORDED IN VOL. 8, PAGE 18 AND VOL. 3, PAGE 6 OF 1901 AND 1925 SURVEY NOTES WE LOCATED THE WEST 1/4 POST OF SECTION 17 AND SET A MONUMENT AT THE BASE OF POST. WE THEN CALCULATED THE LOCATION OF AND SET THE W 1/4 CORNER OF SECTION 16.

10-9-07; JG FOUND EXISTING MONUMENT AND ALL PIPE TIES. ONLY ABOUT 6in. OF HARRISON IS IN THE GROUND

19 JANUARY 2011; FOUND HARRISON MONUMENT BROKEN AND ON TOP OF GROUND AND ONLY ONE WITNESS MONUMENT. SET HARRISON CAST IRON MONUMENT USING EXISTING WITNESS MONUMENT AND SECTION SUMMARY BY RLS 1551 DATED 6-29-83

**PLAN VIEW:** CHAPTER A-E 7.08 (3): (C), (D), (E),



**SURVEYOR'S CERTIFICATE:** CHAPTER 7.08 (3): (I)

THE UNDERSIGNED HEREBY CERTIFIES THAT THE U.S. PUBLIC LAND SURVEY MONUMENT RECORD IS CORRECT AND COMPLETE TO THE BEST OF MY KNOWLEDGE AND BELIEF.

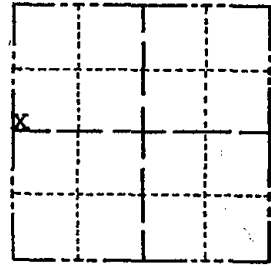


*Darren B. Krzanowski*  
DARREN B. KRZANOWSKI  
WISCONSIN LAND SURVEYOR S-2663  
DATED THIS 21ST DAY OF JANUARY 2011

# Government Land Corner Certificate

ADAMS County  
 TYPE OF MONUMENT: Harrison Std.  
 STATE PLANE COORDINATES: N \_\_\_\_\_  
 E \_\_\_\_\_  
 ELEVATION — M.S.L. DATUM: \_\_\_\_\_  
 THETA ANGLE: \_\_\_\_\_  
 FIELD BOOK: \_\_\_\_\_ PAGE \_\_\_\_\_  
 DRAWN BY: \_\_\_\_\_

CORNER NO. 56  
 SECTION 16  
 TOWN T. 18 N.  
 RANGE R. 7 E.



LOCATION  
(Indicated by 'X')

## BASIS FOR MONUMENT LOCATION

Show info such as: History of corner, with reference to Vol. and pg., dates, surveyor; exact description of monument replaced; if location computed, by taped or EDM traverse; landowner remarks, etc. (Use reverse side if necessary)

Using an E.D.M. traverse beginning at the SE and SW corners of Section 16, set by Kiedrowski, and following the original section measurements, as recorded in Vol. 8, Page 18 and Vol. 3, Page 6 of 1901 and 1925 survey notes we located the West  $\frac{1}{4}$  post of Section 17 and set a monument at the base of post. We then calculated the location of and set the West  $\frac{1}{4}$  corner of Section 16.

SEAL:



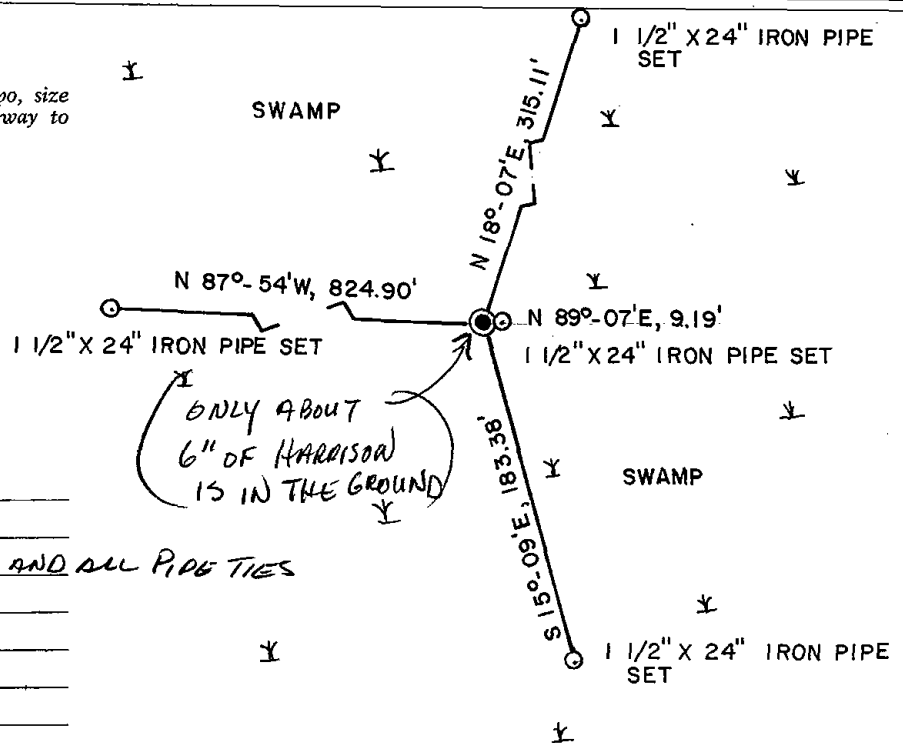
DATA SHOWN HERE ON  
CERTIFIED CORRECT:

*Dennis M. Green*  
Registered Land Surveyor

DATE: Sept. 15, 1978

## TIE SKETCH

Show at least four ties, also fence lines, roads, topo, size and type of witness trees' and if off road - best way to arrive at corner.



## MAINTENANCE RECORD

Date	Init.	Remarks
10-9-07	JG	FD EXISTING MON. AND ALL PIPE TIES

ADAMS COUNTY

Survey Monument Record

TYPE OF MONUMENT: HARRISON MON.

STATE PLANE COORDINATES: N \_\_\_\_\_

E \_\_\_\_\_

ELEVATION — M.S.L. DATUM: \_\_\_\_\_

THETA ANGLE: \_\_\_\_\_

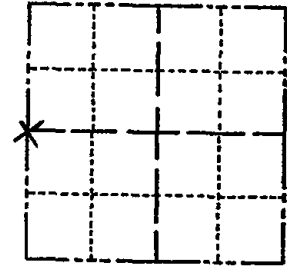
FIELD BOOK: \_\_\_\_\_ PAGE \_\_\_\_\_

CORNER NO. 56

SECTION 16

TOWN 18 N

RANGE 7 E



LOCATION  
(Indicated by 'X')

SEAL:

BASIS FOR MONUMENT LOCATION

(Use reverse side if necessary)

Show info such as: History of corner, with reference to Vol. and pg, dates, surveyor; exact description of monument replaced; if location computed, by taped or EDM traverse; landowner remarks, etc.

Ran EDM traverse around Section 16 and tied in all existing evidence.

Set West one-quarter corner on straight line in proportion to original ties.



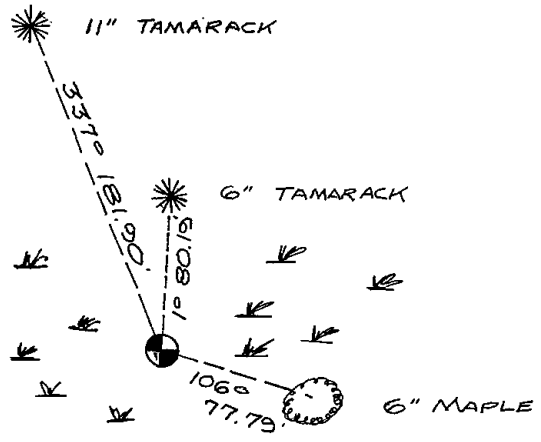
CERTIFIED CORRECT:

*James E. Lowrey*  
Registered Land Surveyor

DATE: July 15, 1977

TIE SKETCH

(Show at least four ties)



Note:  
Ties in trees to  
#60 spikes.

Dug extensive hole and found nothing.

