

16 SECTION 18 TOWN 07 RANGE

ADAMS COUNTY

COUNTY CORNER NO: 57
 ROMPORTOL ID: 41807162000

PUBLIC LAND SURVEY MONUMENT RECORD

TYPE OF MONUMENT: CALCULATED POSITION
 ADAMS COUNTY COORDINATES, NAD 83 (2007)

N. 242977.135

E. 572814.029

ELEVATION- _____ DATUM _____

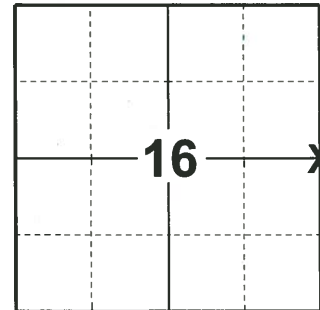
FIELD WORK DATE: 01/09/2020

BASIS FOR MONUMENT LOCATION

1978 - PLS 1184 USING A EDM TRAVERSE BEGINNING AT THE SE AND SW CORNERS OF SECTION 16, SET BY KIEDROWSKI, AND FOLLOWING THE ORIGINAL SECTION MEASUREMENTS, AS RECORDED IN VOL. 8, PG. 18 AND VOL. 3, PG. 6 OF 1901 AND 1925 SURVEY NOTES LOCATED THE WEST 1/4 POST OF SECTION 17 AND SET A MONUMENT AT THE BASE OF POST. THEN CALCULATED THE LOCATION OF AND SET THE E1/4 CORNER OF SECTION 16.

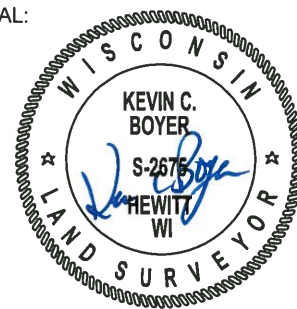
2011 - PLS 2663 FOUND NO EVIDENCE OF CORNER OR WITNESS MONUMENTS IN FARM FIELD. COMPUTED CORNER LOCATION ON LINE AND AT MID POINT BETWEEN THE NE CORNER AND SE CORNER OF SAID SECTION 16.

2020 - PLS 2675 NO MONUMENT WAS FOUND, RECOVERED 3 OF THE 4 TIES. THE CORNER WAS CALCULATED ON A STRAIGHT LINE, HALF WAY SPLIT BETWEEN THE NE AND SE CORNERS OF SECTION 16. THIS POSITION AGREES WITH THE 3 EXISTING TIES. ACCEPTED THIS CALCULATED POSITION AS THE CORNER LOCATION. SET 1 NEW TIE AND MEASURED TO THE EXISTING TIES.



LOCATION
 (INDICATE CORNER BY "X")

SEAL:

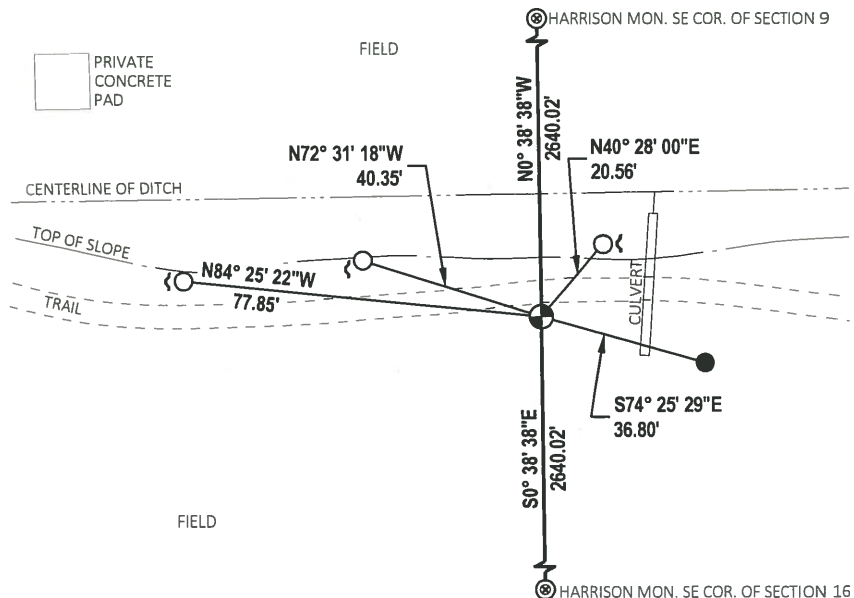
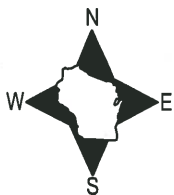


DATA SHOWN HERE ON THIS TIE SHEET IS CORRECT AND COMPLETE TO THE BEST OF MY KNOWLEDGE AND BELIEF.

PROFESSIONAL LAND SURVEYOR

DATE 3/9/2020

TIE SKETCH



- SET 3/4" x 18" IRON REBAR, 1.50#/FT
- FOUND 3/4" IRON ROD
- ⊕ CALCATED POSITION
- ⊙ FOUND HARRISON MONUMENT
- ┘ STEEL FENCE POST

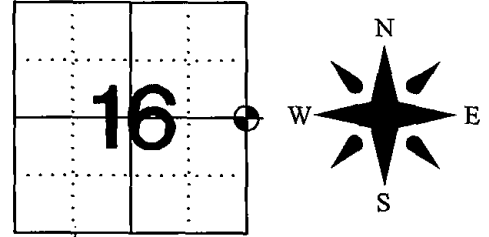
**U.S. PUBLIC LAND SURVEY MONUMENT RECORD
ADAMS COUNTY, WISCONSIN**

CORNER NO. 57
CORNER NO. 41807162000

IN ACCORDANCE WITH WISCONSIN ADMINISTRATIVE CODE, CHAPTER A-E 7.08 (3) (A)-(I)

LOCATION: CHAPTER A-E 7.08 (3): (A)

SECTION 16 TOWNSHIP 18 NORTH RANGE 7 EAST
TOWN OF: RICHFIELD
TYPE OF CORNER: EAST QUARTER CORNER
TYPE OF MONUMENT: NO MONUMENT SET
HORIZONTAL DATUM: NAD 83-91 GRID
ADAMS COUNTY COORDINATES:
NORTHING: 242977.234
EASTING: 572814.045



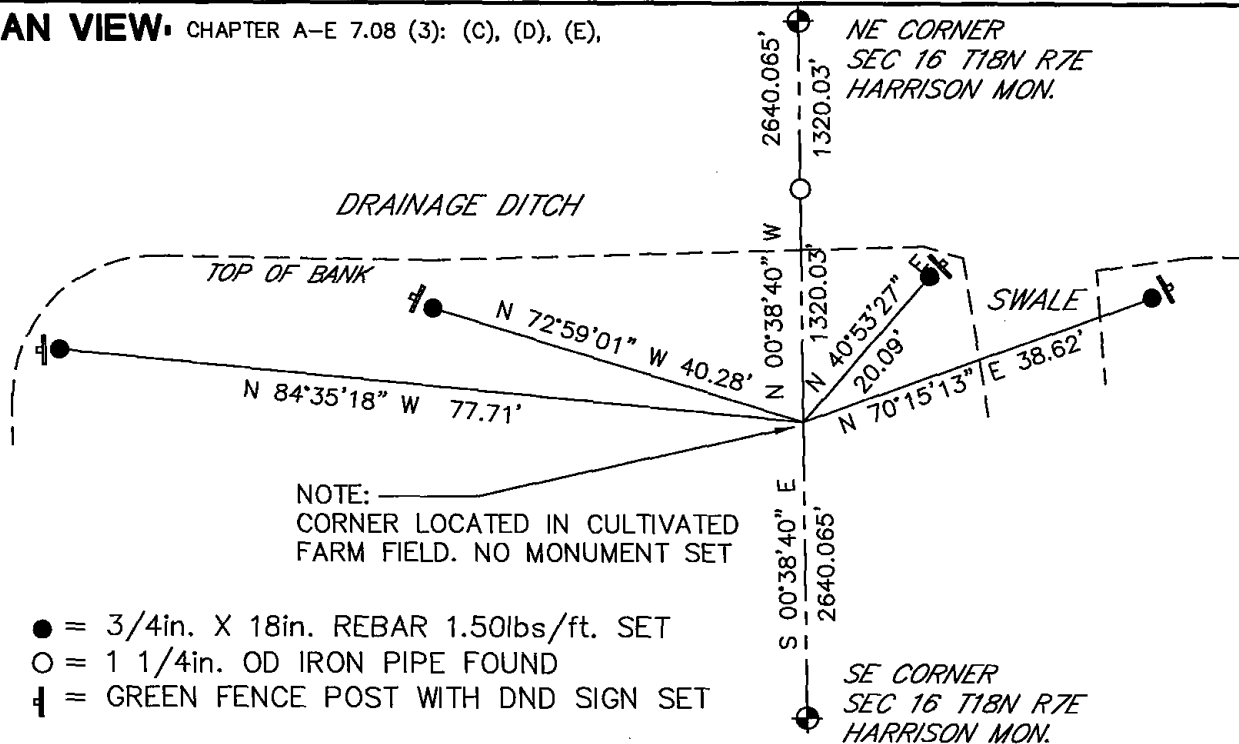
RECOVERY PROCEDURES: CHAPTER A-E 7.08 (3): (B), (F), (G), (H)

15 SEPT 1978 RLS 1184; USING AN E.D.M. TRAVERSE BEGINNING AT THE SE AND SW CORNERS OF SECTION 16, SET BY KIEDROWSKI, AND FOLLOWING THE ORIGINAL SECTION MEASUREMENTS, AS RECORDED IN VOL. 8, PAGE 18 AND VOL. 3, PAGE 6 OF 1901 AND 1925 SURVEY NOTES WE LOCATED THE WEST 1/4 POST OF SECTION 17 AND SET A MONUMENT AT THE BASE OF POST. WE THEN CALCULATED THE LOCATION OF AND SET THE E 1/4 CORNER OF SECTION 16.

10-19-07 JG; COMPLETE AREA UNDER CULTIVATION, USE SECTION SUMMARY.

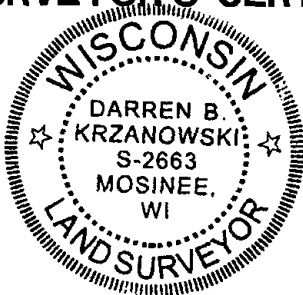
19 JANUARY 2011; FOUND NO EVIDENCE OF CORNER OR WITNESS MONUMENTS IN FARM FIELD. COMPUTED CORNER LOCATION ON LINE AND AT MID POINT BETWEEN THE NE CORNER AND SE CORNER OF SAID SECTION 16.

PLAN VIEW: CHAPTER A-E 7.08 (3): (C), (D), (E),



SURVEYOR'S CERTIFICATE: CHAPTER 7.08 (3): (I)

THE UNDERSIGNED HEREBY CERTIFIES THAT THE U.S. PUBLIC LAND SURVEY MONUMENT RECORD IS CORRECT AND COMPLETE TO THE BEST OF MY KNOWLEDGE AND BELIEF.

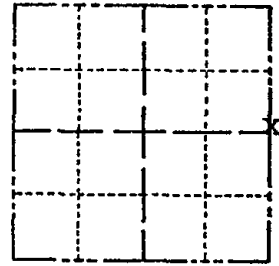


Darren Krzanowski
DARREN B. KRZANOWSKI
WISCONSIN LAND SURVEYOR S-2663
DATED THIS 21ST DAY OF JANUARY 2011

Government Land Corner Certificate

ADAMS County
 TYPE OF MONUMENT: Harrison Std.
 STATE PLANE COORDINATES: N _____
 E _____
 ELEVATION — M.S.L. DATUM: _____
 THETA ANGLE: _____
 FIELD BOOK: _____ PAGE _____
 DRAWN BY: _____

CORNER NO. 57
 SECTION 16
 TOWN T. 18 N.
 RANGE R. 7 E.



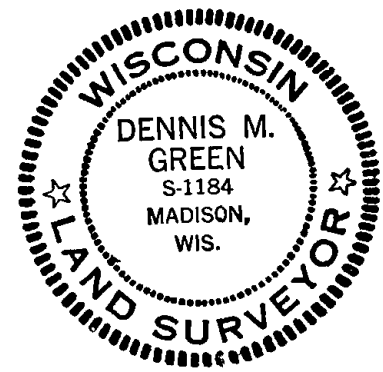
LOCATION
(Indicated by 'X')

BASIS FOR MONUMENT LOCATION

Show info such as: History of corner, with reference to Vol. and pg., dates, surveyor; exact description of monument replaced; if location computed, by taped or EDM traverse; landowner remarks, etc. (Use reverse side if necessary)

Using an E.D.M. traverse beginning at the SE and SW corners of Section 16, set by Kiedrowski, and following the original section measurements, as recorded in Vol. 8, Page 18 and Vol. 3, Page 6 of 1901 and 1925 survey notes we located the West $\frac{1}{4}$ post of Section 17 and set a monument at the base of post. We then calculated the location of and set the E $\frac{1}{4}$ corner of Section 16

SEAL:



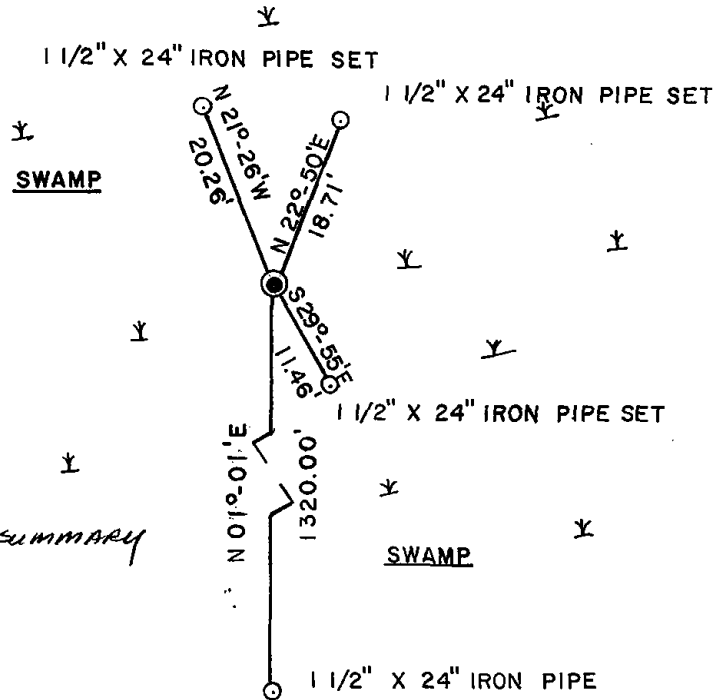
DATA SHOWN HERE ON
CERTIFIED CORRECT:

Dennis M. Green
Registered Land Surveyor

DATE: Sept. 15, 1978

TIE SKETCH

Show at least four ties, also fence lines, roads, topo, size and type of witness trees' and if off road - best way to arrive at corner.



MAINTENANCE RECORD

Date	Init.	Remarks
10-19-07	JG	COMPLETE AREA UNDER CULTIVATION, USE SECTION SUMMARY