

## PUBLIC LAND SURVEY MONUMENT RECORD

TYPE OF MONUMENT: HARRISON (BROKEN-TOP)  
 ADAMS COUNTY COORDINATES, NAD 83 (2007)

N. 243031.850

E. 583401.211

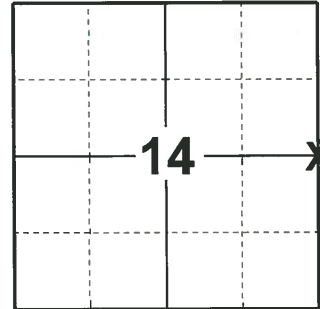
ELEVATION- \_\_\_\_\_ DATUM \_\_\_\_\_

FIELD WORK DATE: 02/04/2020

### BASIS FOR MONUMENT LOCATION

1973 - PLS 878 EXCAVATED WITH BACKHOE AND FOUND STONE. LEFT STONE AS FOUND AND SET A HARRISON MONUMENT ON TOP OF STONE. TRAVERSE OF SECTION INDICATES LOCATION OK.

2020 - PLS 2675 FOUND HARRISON (BROKEN-TOP) MONUMENT 24"± BELOW THE ROAD SURFACE AND 2 TIES. THE MONUMENT AGREES WITH BOTH TIES. ACCEPTED THE HARRISON (BROKEN-TOP) AS THE CORNER LOCATION. SET 3 NEW TIES AND MEASURED TO THE EXISTING TIES.



### LOCATION

(INDICATE CORNER BY "X")

SEAL:



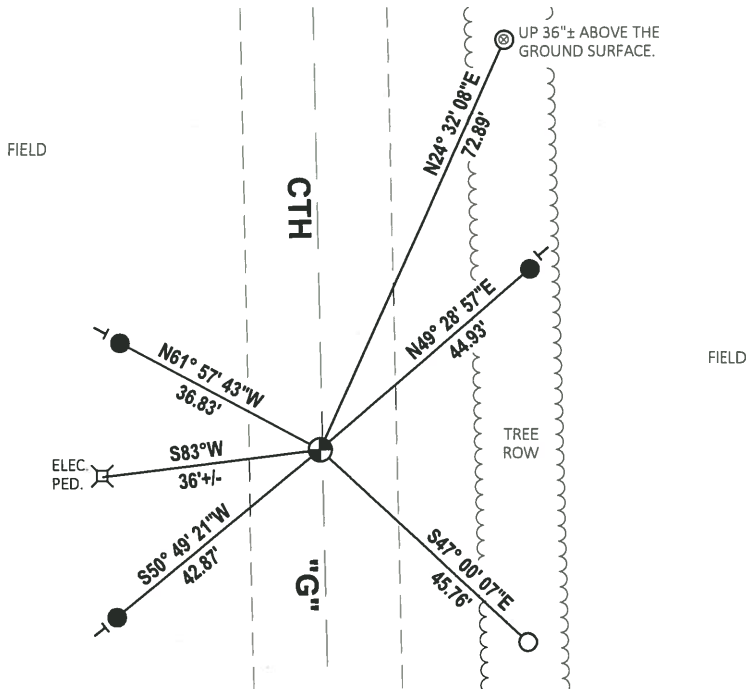
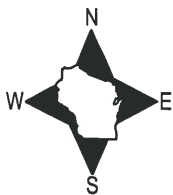
DATA SHOWN HERE ON THIS TIE SHEET IS CORRECT AND COMPLETE TO THE BEST OF MY KNOWLEDGE AND BELIEF.

PROFESSIONAL LAND SURVEYOR

DATE 3/9/2020

### - TIE SKETCH

NOTE: THE CORNER LANDS 0.3'± WEST OF CENTERLINE OF CTH "G".



- SET 3/4" x 18" IRON REBAR, 1.50#/FT
- FOUND 3/4" IRON ROD
- ⊙ FOUND 1-1/2" O.D. IRON PIPE
- ⊕ FOUND HARRISON (BROKEN-TOP) MONUMENT
- └ VINYL "T" POST

# ADAMS COUNTY

## Survey Monument Record

TYPE OF MONUMENT: Partial harrison std.

STATE PLANE COORDINATES: N \_\_\_\_\_

E \_\_\_\_\_

ELEVATION — M.S.L. DATUM: \_\_\_\_\_

THETA ANGLE: \_\_\_\_\_

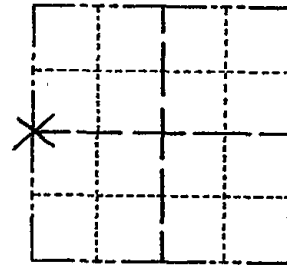
FIELD BOOK: 108 PAGE 11

CORNER NO. 266

SECTION 13

TOWN 18

RANGE 7



LOCATION  
(Indicated by 'X')

SEAL:

### BASIS FOR MONUMENT LOCATION

(Use reverse side if necessary)

Show info such as: History of corner, with reference to Vol. and pg, dates, surveyor; exact description of monument replaced; if location computed, by taped or EDM traverse; landowner remarks, etc.

Excavated with backhoe and found stone.  
See attached picture. Left stone as found and set top  $\approx$  ten inches of a Harrison on top of stone. Traverse of section indicates location OK.



- CORNER O.K. 3-28-77 GR-SS
- " " 5-17-82 PR-SS
- " " 2-23-87 SS
- " " 11-26-91 KZ-SS
- " " 2-18-97 JG-SS
- " " 1-21-02 JG
- " " 4-11-07 JG

CERTIFIED CORRECT:

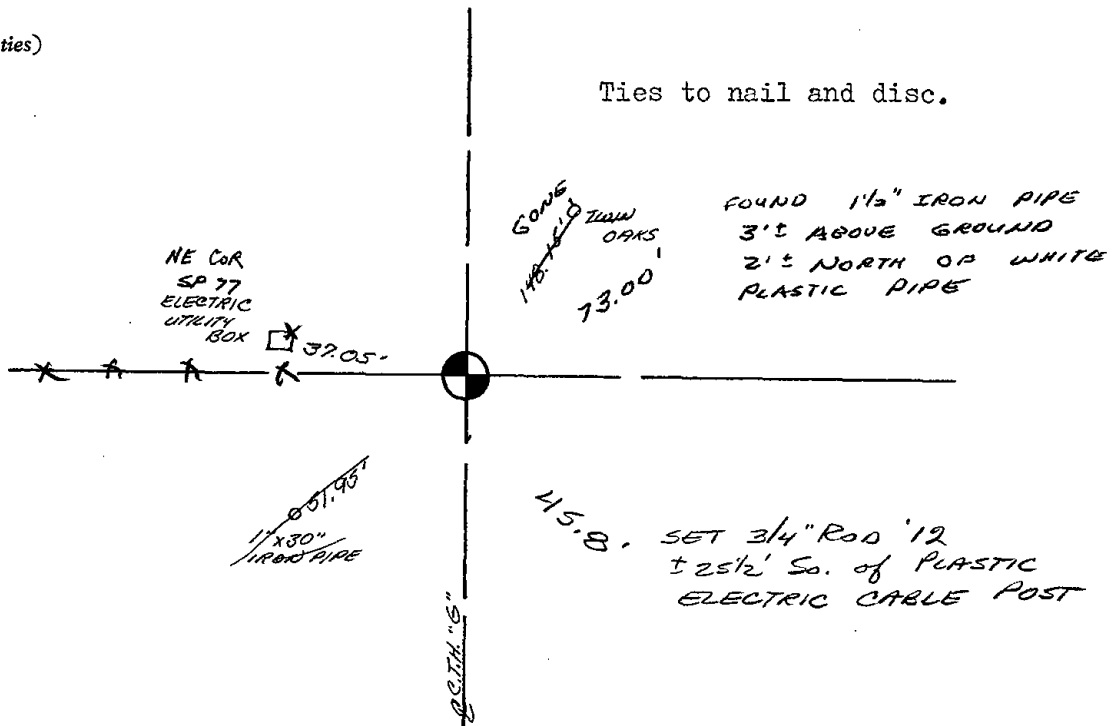
Registered Land Surveyor

DATE: 4/11/73

1 NEW TIE 02-27-12 MS-SS

### TIE SKETCH

(Show at least four ties)





ADAMS COUNTY

Survey Monument Record

TYPE OF MONUMENT: Partial harrison std.

STATE PLANE COORDINATES: N \_\_\_\_\_

E \_\_\_\_\_

ELEVATION — M.S.L. DATUM: \_\_\_\_\_

THETA ANGLE: \_\_\_\_\_

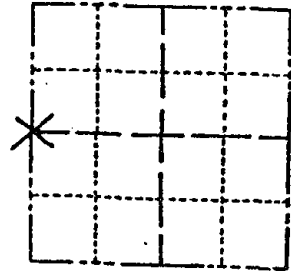
FIELD BOOK: 108 PAGE 11

CORNER NO. 266

SECTION 13

TOWN 18

RANGE 7



LOCATION (Indicated by 'X')

SEAL:

BASIS FOR MONUMENT LOCATION

(Use reverse side if necessary)

Show info such as: History of corner, with reference to Vol. and pg, dates, surveyor; exact description of monument replaced; if location computed, by taped or EDM traverse; landowner remarks, etc.

Excavated with backhoe and found stone. See attached picture. Left stone as found and set top ten inches of a Harrison on top of stone. Traverse of section indicates location OK.



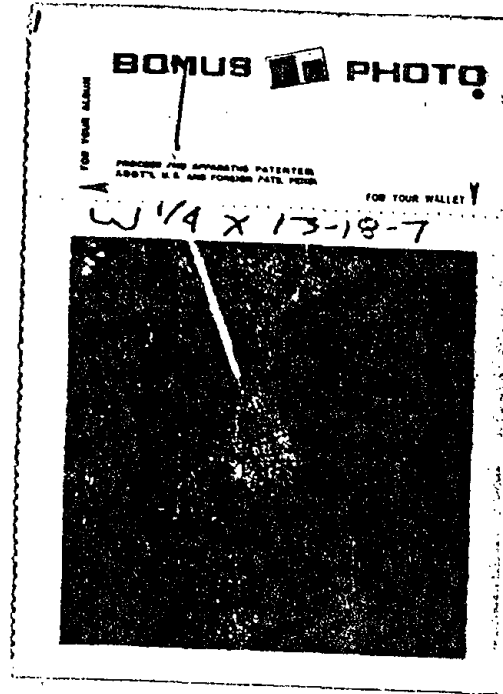
CORNER O.K. 3-28-77 GR-SS  
" " 5-17-82 PR-SS

REPAVED  
SET, P.K. 6-85 RLS.

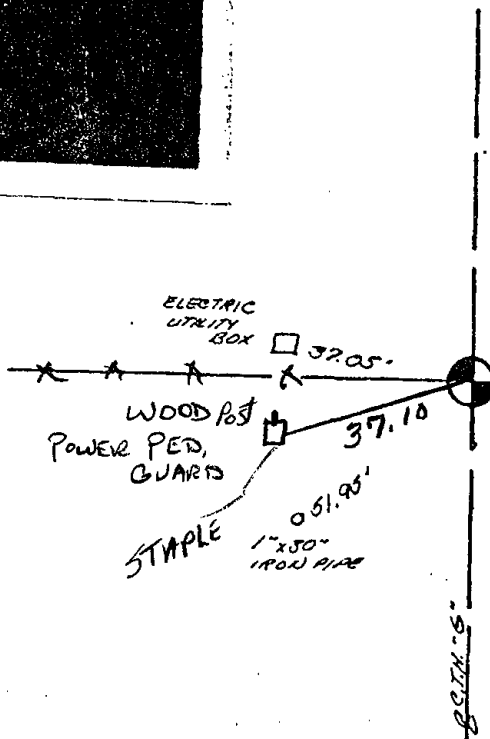
CERTIFIED CORRECT:

*Anthony B. Kiedrowski*  
Registered Land Surveyor

DATE: 14/11/73



Ties to nail and disc.



FOUND OK  
1 1/2\"/>

FOUND OK  
1 1/2\"/>

