

13 SECTION 18 TOWN 07 RANGE

ADAMS COUNTY

COUNTY CORNER NO: 60
 ROMPORTOL ID: 41807132000

PUBLIC LAND SURVEY MONUMENT RECORD

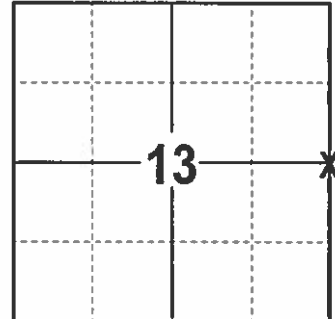
TYPE OF MONUMENT: HARRISON
 ADAMS COUNTY COORDINATES, NAD 83 (2007)

N. 243164.705

E. 588712.168

ELEVATION- DATUM

FIELD WORK DATE: 1/9/2017



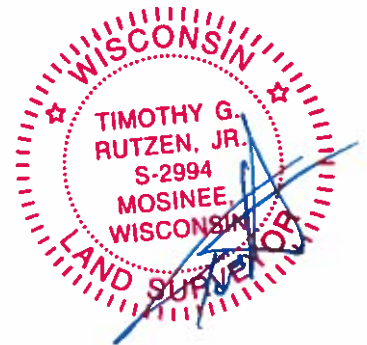
LOCATION
 (INDICATE CORNER BY "X")

BASIS FOR MONUMENT LOCATION

1973 - PLS 878 EXCAVATED THE GENERAL AREA AND FOUND NOTHING. SET A HARRISON ON A STRAIGHT LINE AND EQUIDISTANT BETWEEN SECTION CORNERS.

2017 - PLS 2994 FOUND EXISTING HARRISON, 2 EXISTING TIES AND 1 WITNESS. THE HARRISON AGREES WITH EXISTING TIES AND WITNESS. ACCEPTED HARRISON AND SET 2 NEW TIES.

SEAL:

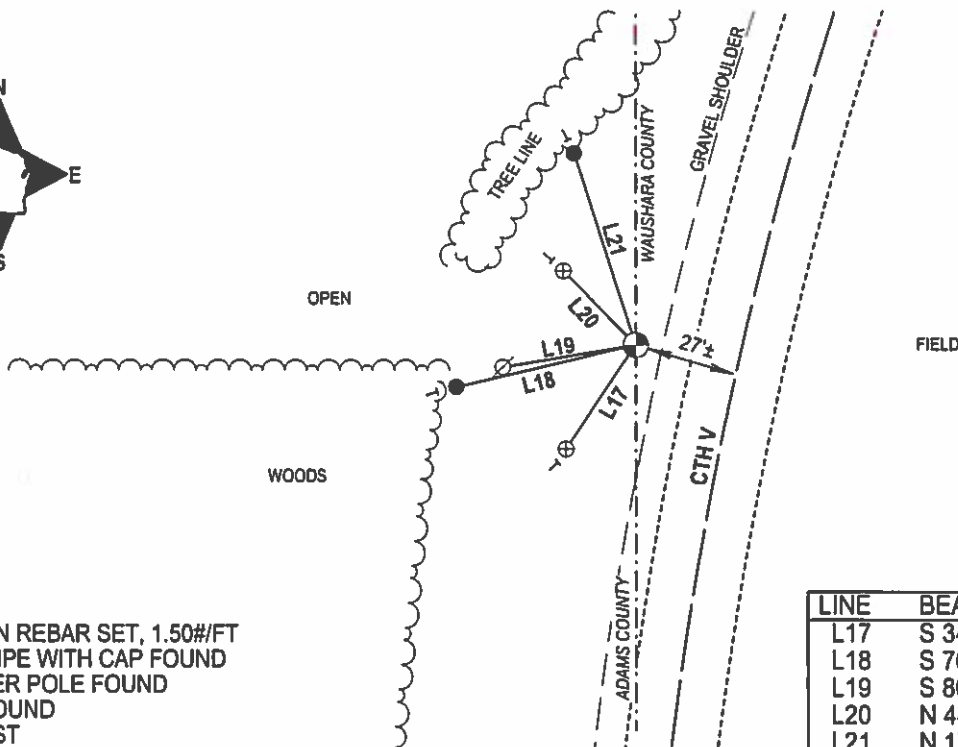
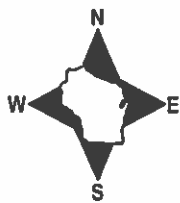


DATA SHOWN HERE ON THIS TIE SHEET IS CORRECT AND COMPLETE TO THE BEST OF MY KNOWLEDGE AND BELIEF.

PROFESSIONAL LAND SURVEYOR

DATE 2/9/17

- TIE SKETCH



- 3/4" x 18" IRON REBAR SET, 1.50#/FT
- ⊕ 2" OD IRON PIPE WITH CAP FOUND
- ⊗ NAIL IN POWER POLE FOUND
- ⊙ HARRISON FOUND
- VINYL "T" POST

LINE	BEARING	DISTANCE
L17	S 34°03'45" W	32.59'
L18	S 76°50'44" W	48.12'
L19	S 80°33' W	35.5'±
L20	N 44°30'05" W	26.98'
L21	N 17°59'10" W	52.27'

ADAMS COUNTY

Survey Monument Record

TYPE OF MONUMENT: 1/2" dia x 20" long

STATE PLANE COORDINATES: N _____

E _____

ELEVATION — M.S.L. DATUM: _____

THETA ANGLE: _____

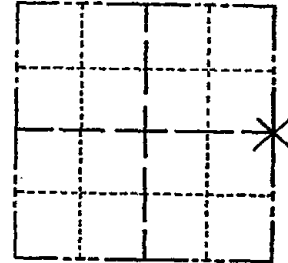
FIELD BOOK: 108 PAGE 12

CORNER NO. 269

SECTION 13

TOWN 18

RANGE 7



LOCATION
(Indicated by 'X')

SEAL:



BASIS FOR MONUMENT LOCATION

(Use reverse side if necessary)

Show info such as: History of corner, with reference to Vol. and pg, dates, surveyor; exact description of monument replaced; if location computed, by taped or EDM traverse; landowner remarks, etc.

Set on a straight line
 Equidistant between
 Section Corners, Excavated
 general area with Backhoe
 and found nothing

CORNER O.K. 3-14-77
 " " 5-17-82
 " " 2-23-87

2-NEW, TOP BROKEN OFF MON. 7-6-92 JG-BS

CORNER OK 1-21-02 JG

OK, 4-11-07-JG

1 NEW TIE 02-28-12 MS

CERTIFIED CORRECT:

Anthony B. Kiedrowski
 Registered Land Surveyor

DATE: 9-11-77

TIE SKETCH

(Show at least four ties)

