

18
SECTION

18
TOWN

07
RANGE

ADAMS COUNTY

COUNTY CORNER NO: 62

ROMPORTOL ID: 41807180020

PUBLIC LAND SURVEY MONUMENT RECORD

TYPE OF MONUMENT: BERNTSEN SNM1 SURVEY NAIL

ADAMS COUNTY COORDINATES, NAD 83 (2007)

N. 240323.180

E. 559623.656

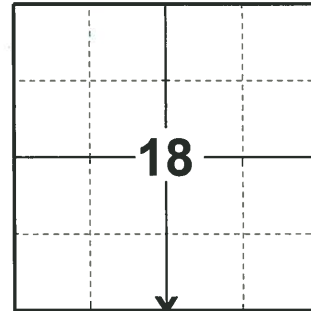
ELEVATION- - - DATUM - -

FIELD WORK DATE: 02/04/2020

BASIS FOR MONUMENT LOCATION

2014 - PLS 2643 RECALLS THE MOST RECENT TIE SHEET OF RECORD WAS FILED BY G. RHINEHART ON 2/24/1981. AT THAT TIME A P.K. NAIL WAS SET AT THE CORNER. SINCE A NUMBER OF SURVEYORS HAVE VISITED THIS CORNER AND HAVE DONE MAINTENANCE ON THE CORNER AS RECENT AS 2012. PRIOR TO HIGHWAY 21 CONSTRUCTION A P.K. NAIL WAS FOUND AT THE CORNER LOCATION. AFTER THE COMPLETION OF THE HIGHWAY CONSTRUCTION A BERNTSEN SNM 1 MARKING NAIL WAS SET AND 4 NEW WITNESS MONUMENTS WERE SET TO REFERENCE THIS CORNER LOCATION.

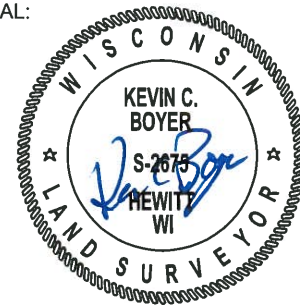
2020 - PLS 2675 FOUND BERNTSEN SNM 1 SURVEY NAIL FLUSH WITH THE ROAD SURFACE AND 4 TIES. DID NOT REMOVE BERNTSEN SNM 1 SURVEY NAIL SINCE ORIGINAL MONUMENT WAS A PK NAIL. THE BERNTSEN SNM 1 SURVEY NAIL AGREES WITH ALL 4 TIES. ACCEPTED THE BERNTSEN SNM 1 SURVEY NAIL AS THE CORNER LOCATION AND MEASURED TO THE EXISTING TIES.



LOCATION

(INDICATE CORNER BY "X")

SEAL:



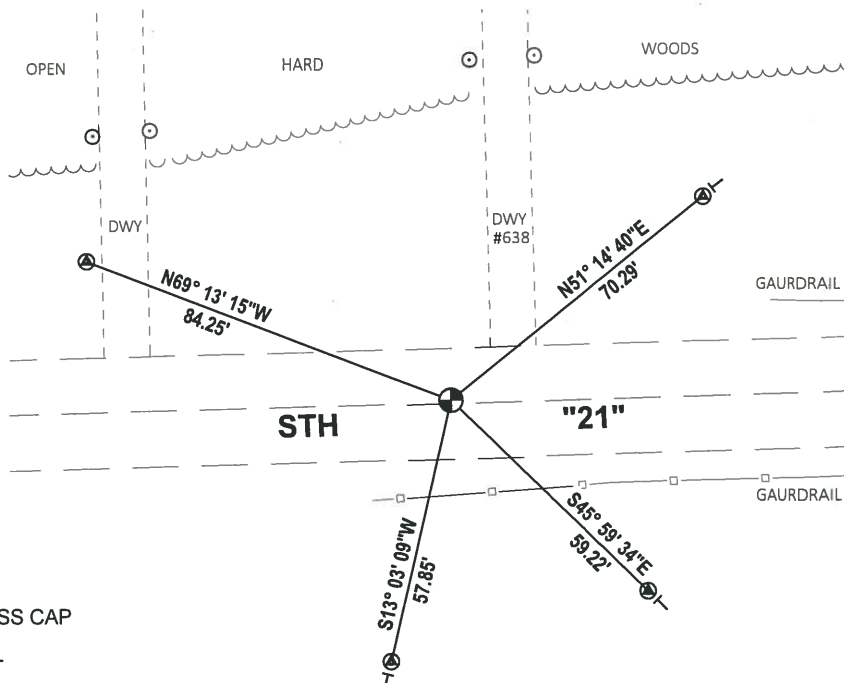
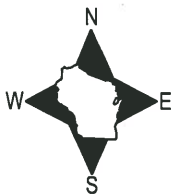
DATA SHOWN HERE ON THIS TIE SHEET IS CORRECT AND COMPLETE TO THE BEST OF MY KNOWLEDGE AND BELIEF.

PROFESSIONAL LAND SURVEYOR

DATE 3/9/2020

TIE SKETCH

NOTE: THE CORNER LANDS 0.8± NORTH OF CENTERLINE OF STH "21"



- POST
- ⊙ FOUND BERNTSEN SSSDR103 WITH BRASS CAP
- ⊕ FOUND BERNTSEN SNM 1 SURVEY NAIL
- VINYL "T" POST

ADAMS COUNTY U.S. PUBLIC LAND SURVEY MONUMENT LOCATION RECORD

SECTION 19
TOWNSHIP 18 N
RANGE 7 E

62
NO.

LANDMARK BENCHMARK _____

FOUND
SET
RESET
RE-TIED

CORNER IDENTITY: N1/4 CORNER SEC. 19 (BERNTSEN SNM1 NAIL)

RICHFIELD
CITY, VILLAGE, TOWN

MARATHON COUNTY COORDINATE: N: 240323.028

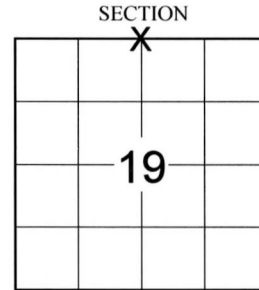
E: 559623.567

ELEVATION-(FEET): _____ DATUM: _____

WEATHER: SUNNY

DATE OF SURVEY: 7/14/2014 TEMPERATURE: 70 °F

SURVEY PARTY: KYLE R. FISCHER



LOCATION
(Indicated By X)

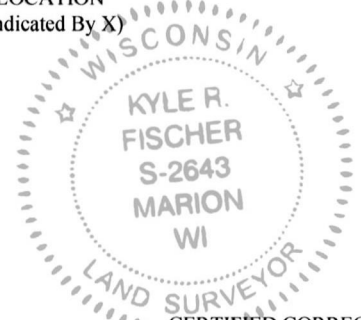


BASIS FOR MONUMENT LOCATION:

(DESCRIBE METHOD OF SURVEY AND CORNER AUTHENTICATION)

The most recent tie sheet of record was filed by Gregory Rhinehart on February 24, 1981. At that time a P.K. nail was set at the corner. Since a number of surveyors have visited this corner and have done maintenance on the corner as recent as 2012.

Prior to the Highway 21 construction a P.K. nail was found at the corner location. After the completion of the highway construction a Berntsen SNM 1 marking nail was set and four new witness monuments were set to reference the corner location.



CERTIFIED CORRECT:

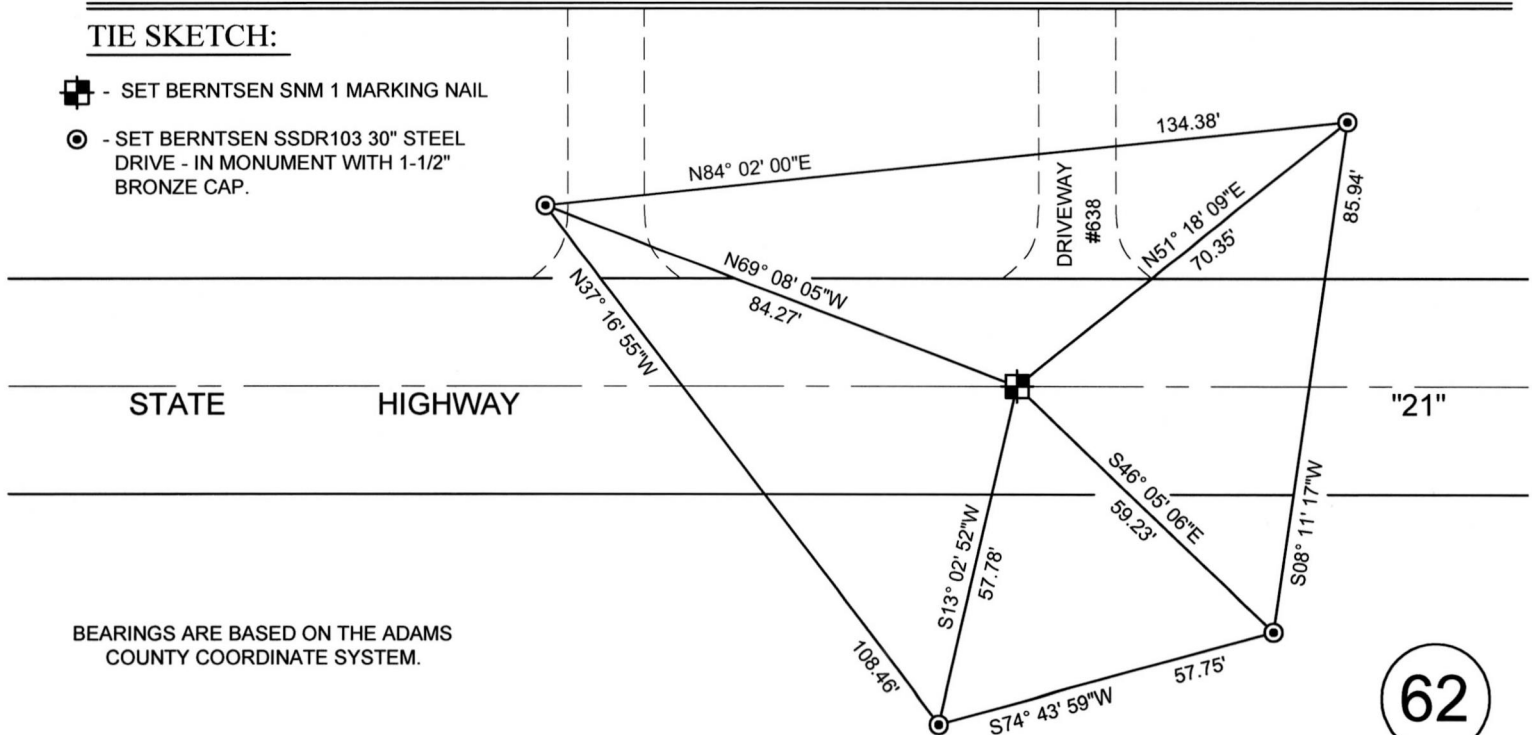
FIELD BOOK NO. S-11 PAGE NO. 68

COMPANY RIVERSIDE LAND SURVEYING LLC

Kyle R. Fischer
KYLE R. FISCHER, S-2643
Registered Land Surveyor
Aug 14, 2014

TIE SKETCH:

- SET BERNTSEN SNM 1 MARKING NAIL
- SET BERNTSEN SSSDR103 30" STEEL DRIVE - IN MONUMENT WITH 1-1/2" BRONZE CAP.



BEARINGS ARE BASED ON THE ADAMS COUNTY COORDINATE SYSTEM.

62
NO.

- THIS DRAWING IS NOT TO SCALE